

THIS MAP WAS PREPARED FOR ASSESSMENT PURPOSE ONLY.

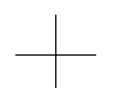
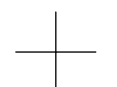
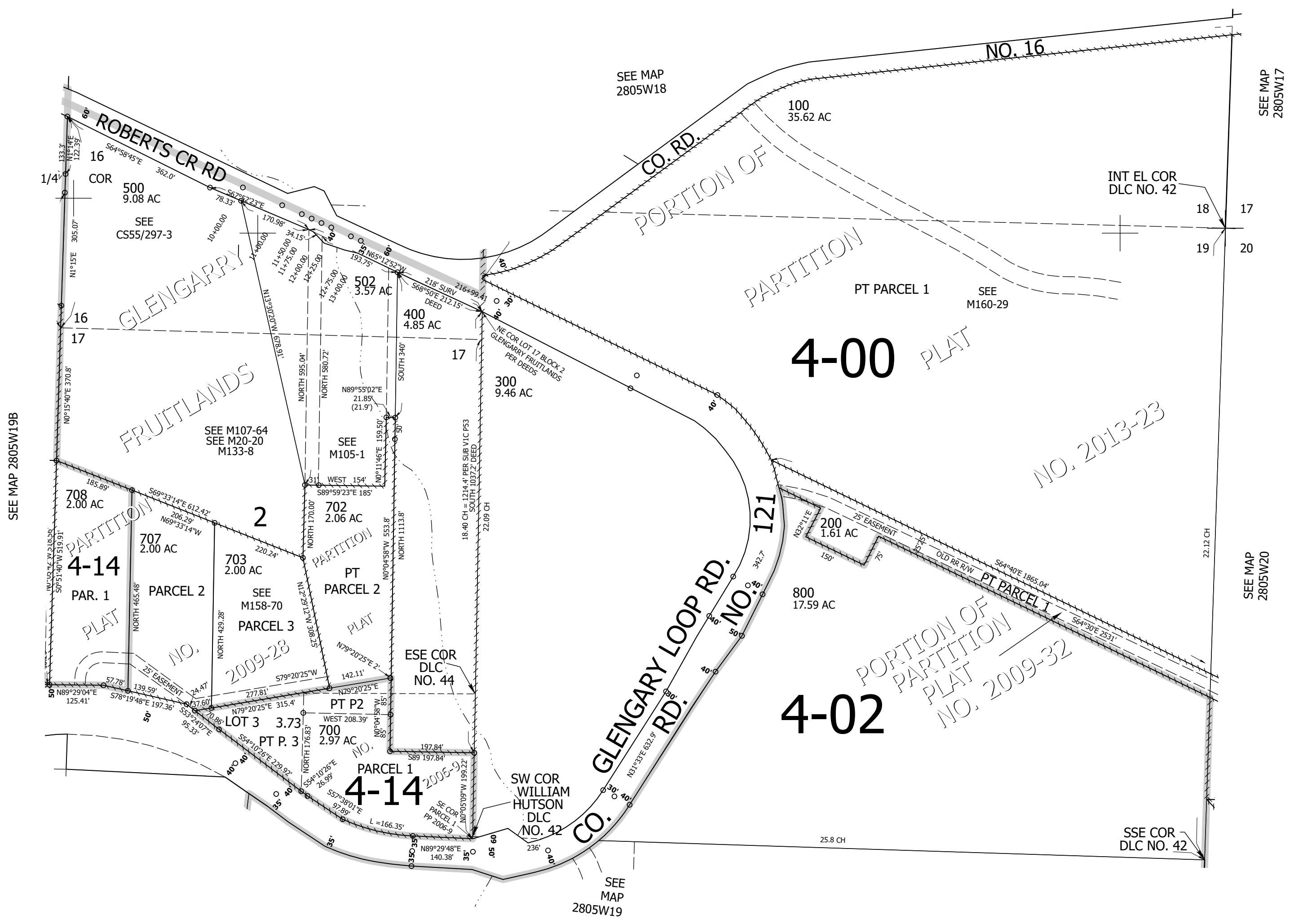
Upper Left:  
123°20'16"W 43°7'49"N  
4163932E 546216N ft

NE1/4 SEC.19 T.28S. R.05W. W.M.  
DOUGLAS COUNTY  
1" = 200'

Date Exported 2025-09-17

280519A

CANCELLED NOS:  
701 501 600  
503 704 705  
706 201



280519A

Lower Right:  
123°19'21"W 43°7'16"N  
4167857E 542739N ft