

THIS MAP WAS PREPARED FOR ASSESSMENT PURPOSE ONLY.

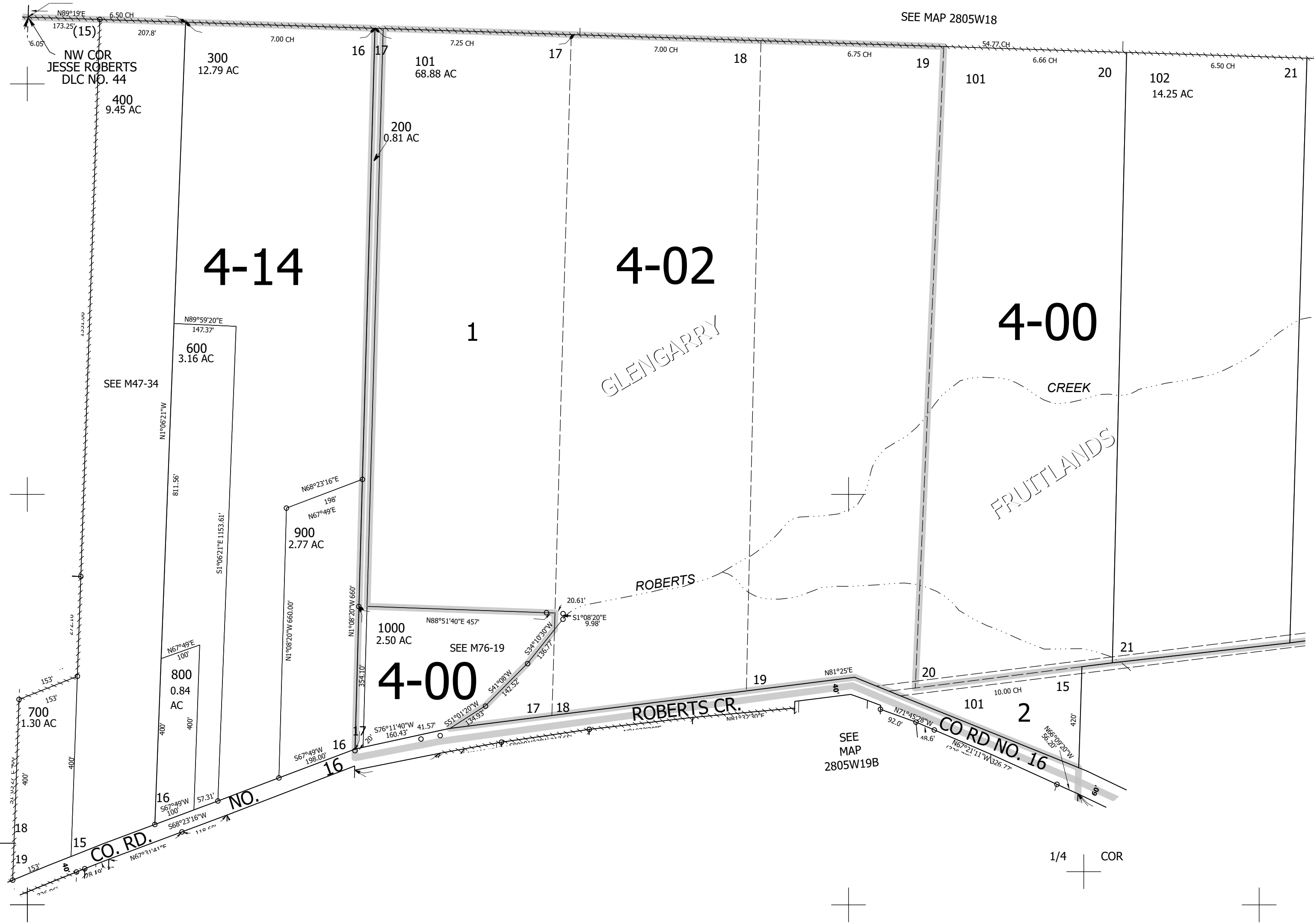
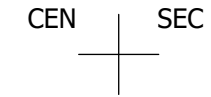
Upper Left:
123°20'48"W 43°8'4"N
4161583E 547844N ft

SW1/4 SEC.18 T.28S. R.05W. W.M.
DOUGLAS COUNTY
1" = 200'

Date Exported 2024-07-02

280518C

CANCELLED NOS:
300M1 900M1 100
500 501



SEE MAP
2806W13D

SEE
MAP
2806W24A

SEE
MAP
2805W19B

SEE MAP 2805W18

SEE M47-34

SEE M76-19

1/4 COR

280518C

Lower Right:
123°19'54"W 43°7'31"N
4165508E 544366N ft