

THIS MAP WAS PREPARED FOR ASSESSMENT PURPOSE ONLY.

SEC.17 T.28S. R.5W. W.M. DOUGLAS COUNTY

1" = 400'

REVISED ON 2-1-21

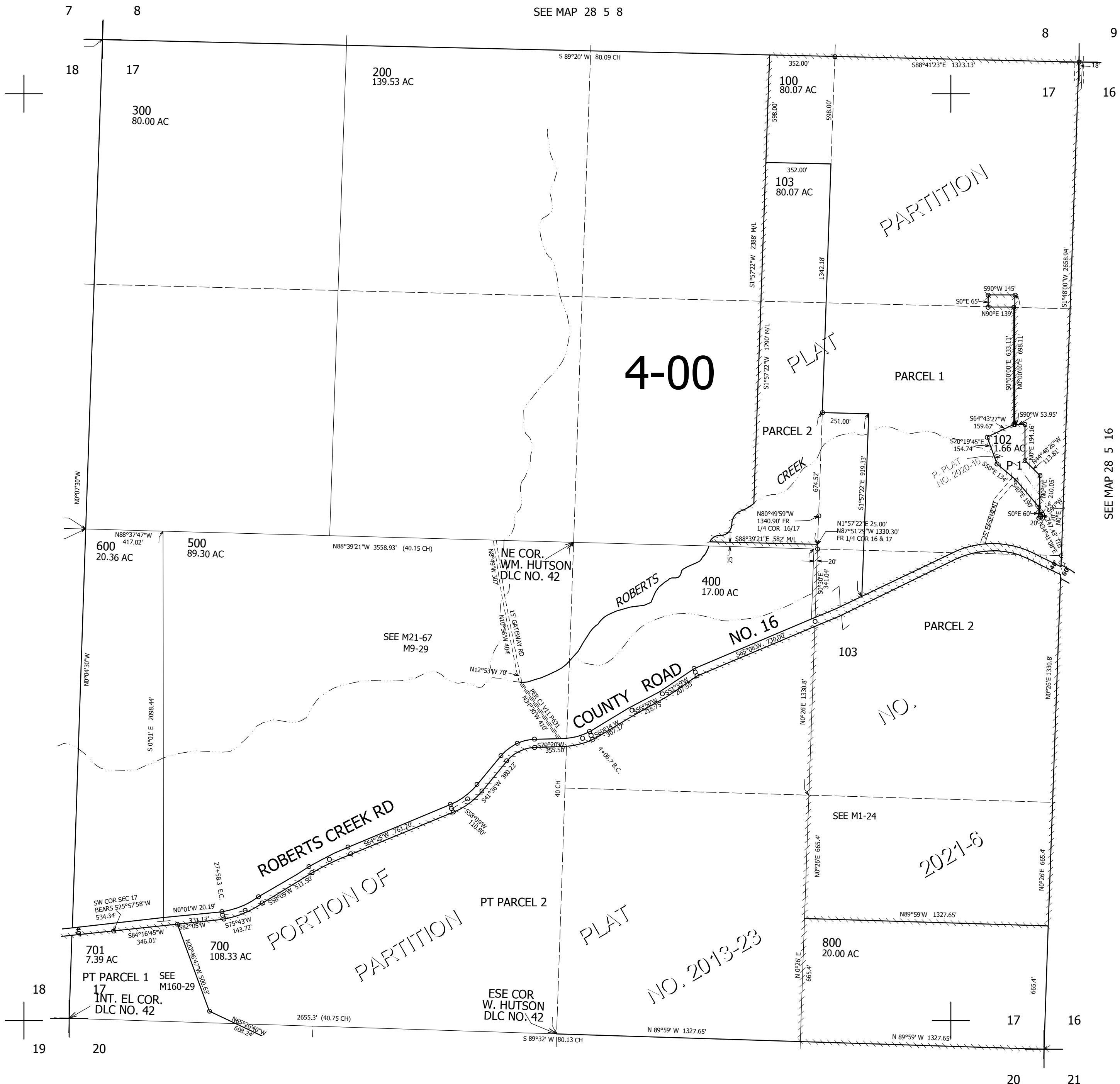
28 5 17

SEE MAP 28 5 18

SEE MAP 28 5 8

SEE MAP 28 5 16

SEE MAP 28 5 20



CANCELLED NO'S 101 201

545,000

4,172,000

28 5 17