

THIS MAP WAS PREPARED FOR ASSESSMENT PURPOSE ONLY.

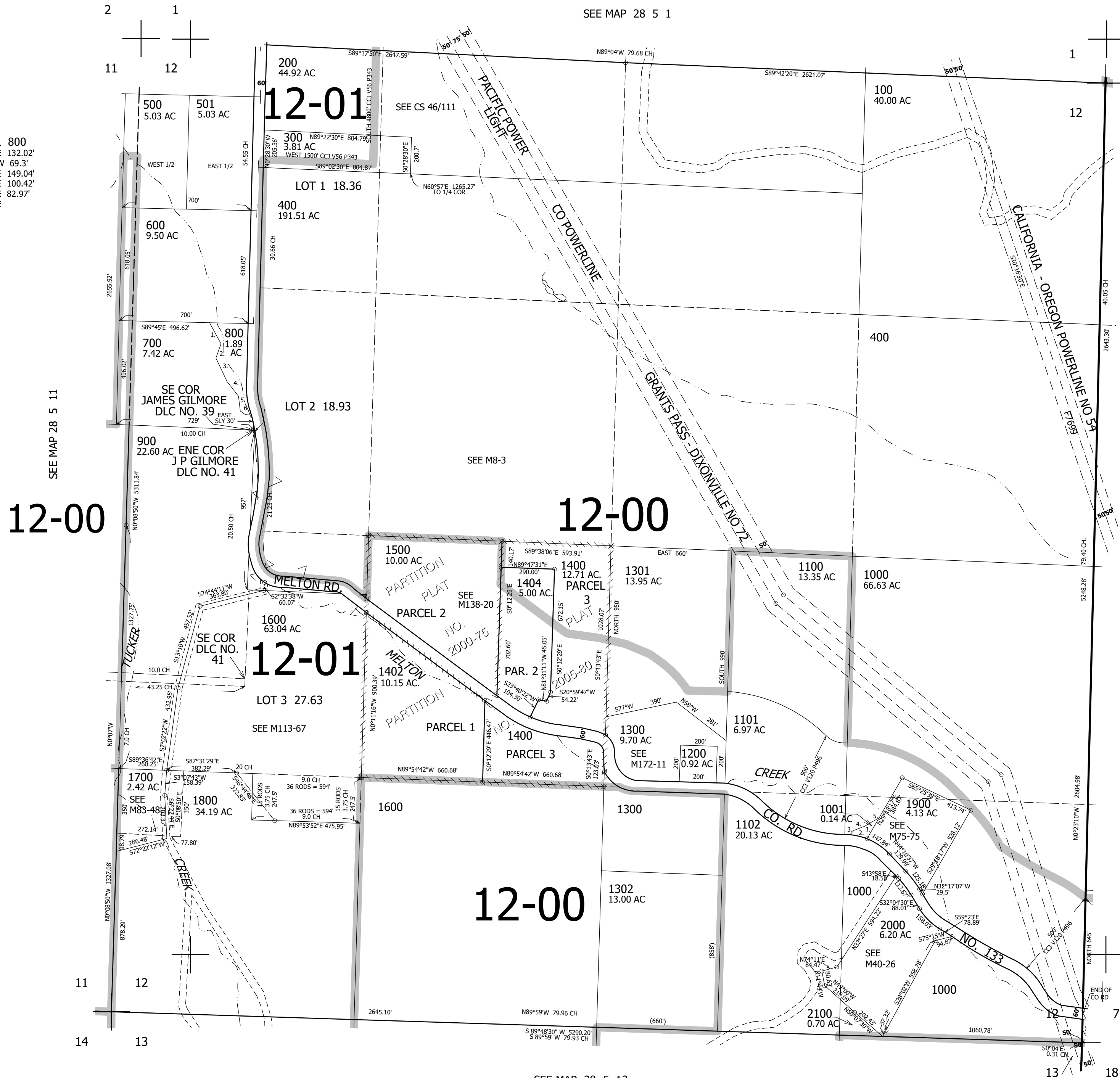
SEC.12 T.28S. R.5W. W.M.
DOUGLAS COUNTY
1" = 400'

REVISED ON
1-12-22

28 5 12

- PARCEL 800
1. S27°55'E 132.02'
 2. S20°10'W 69.3'
 3. S27°12'E 149.04'
 4. S39°40'E 100.42'
 5. S10°02'E 82.97'
 6. S35°33'E

- CANCELLED NO'S
- 1401 1501 1502
 - 1403 1601 1701



SEE MAP 28 5 11

SEE MAP 28 5 1

SEE MAP 28 4 7

SEE MAP 28 5 13

4,194,000

28 5 12