

THIS MAP WAS PREPARED FOR ASSESSMENT PURPOSE ONLY.

SEC.9 T.28S. R.5W. W.M. DOUGLAS COUNTY

REVISED ON 8-15-94

28 5 9

1" = 400'

SEE MAP 28 5 4

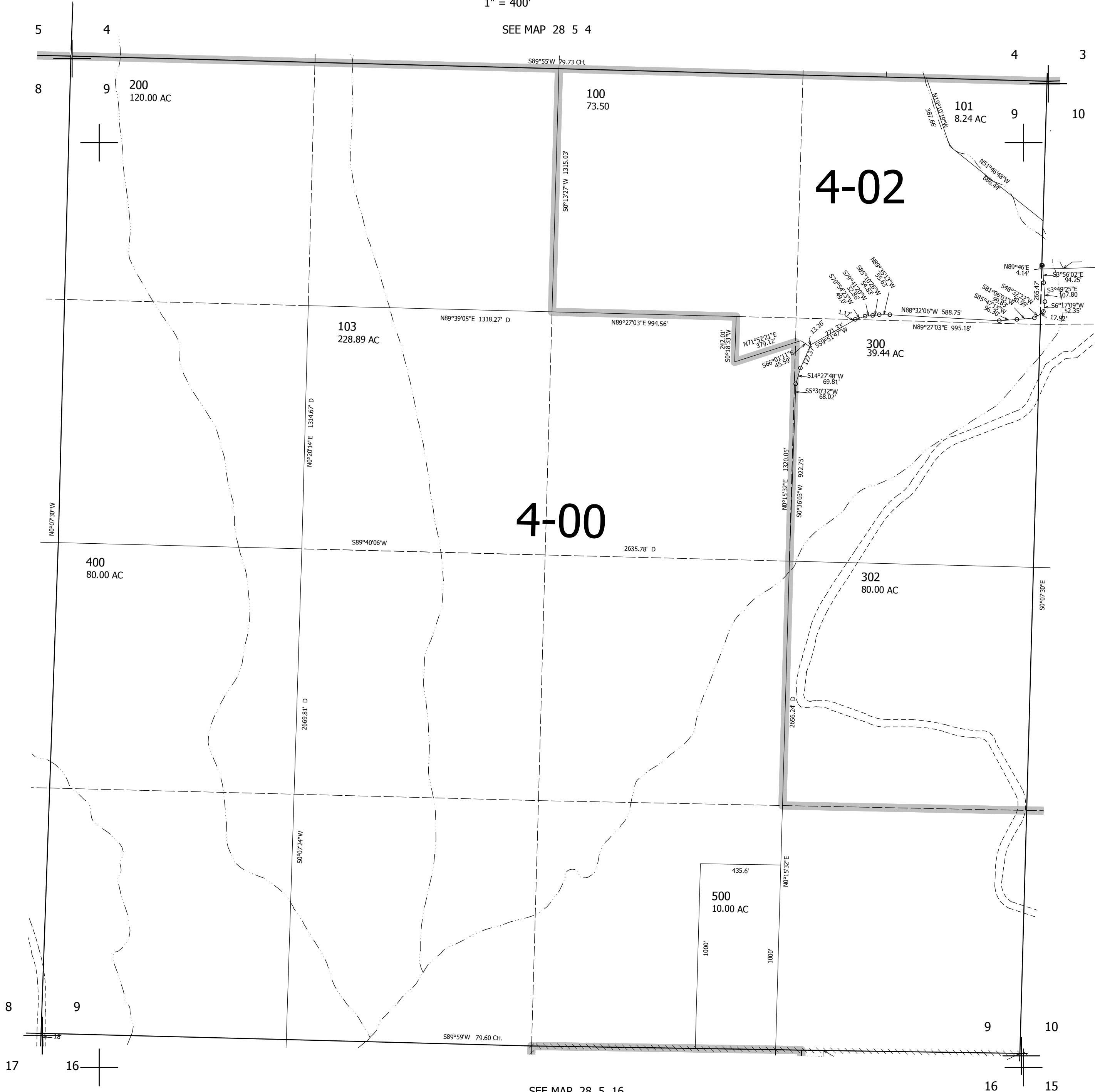
CANCELLED NO'S 102 301

SEE MAP 28 5 8

SEE MAP 28 5 10

4-00

4-02



SEE MAP 28 5 16

550,000

28 5 9

4,178,000