

THIS MAP WAS PREPARED FOR ASSESSMENT PURPOSE ONLY.

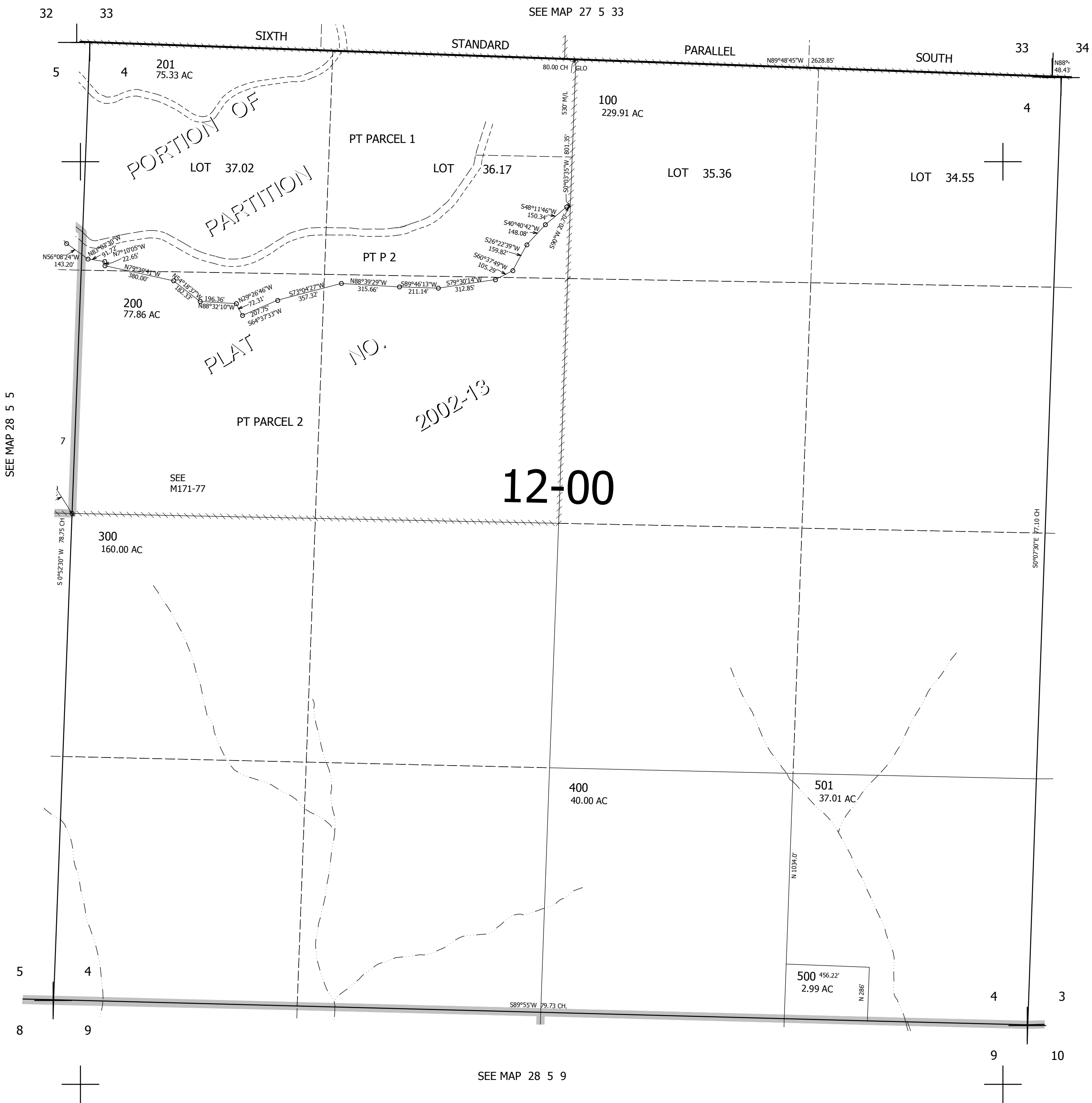
SEC.4 T.28S. R.5W. W.M. DOUGLAS COUNTY

REVISED ON 11-21-19

28 5 4

CANCELLED NO'S 200M1 202

1" = 400'



SEE MAP 28 5 3

555,000

28 5 4

4,178,000