

THIS MAP WAS PREPARED FOR  
ASSESSMENT PURPOSE ONLY.

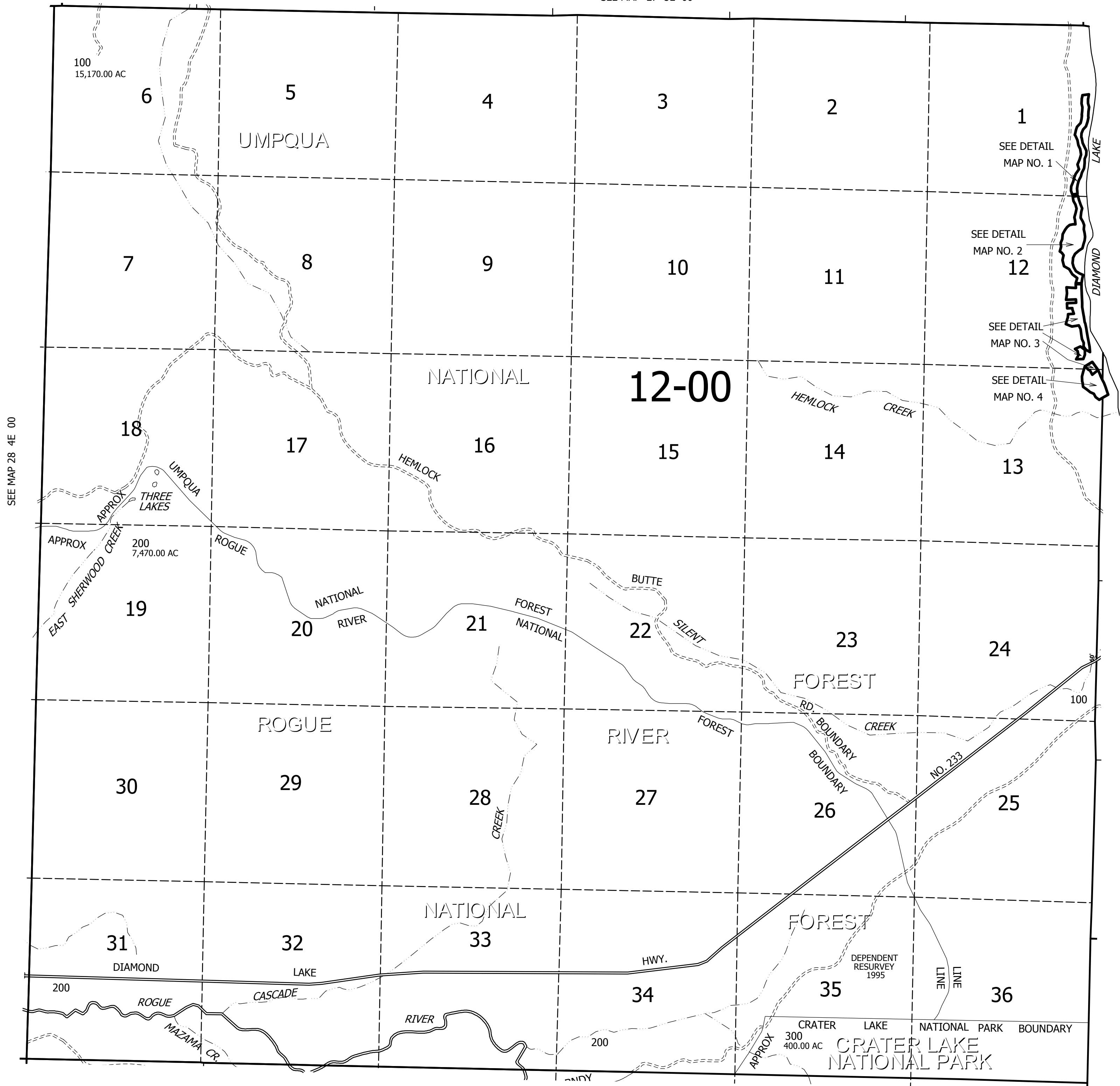
T.28S. R.5E. W.M.  
DOUGLAS COUNTY

1" = 2000'

SEE MAP 27 5E 00

REVISED ON  
5-27-08

28 5E 00  
& INDEX



28 5E 00  
& INDEX

SEE MAP 29 5E 00

THIS MAP WAS PREPARED FOR ASSESSMENT PURPOSE ONLY.

DETAIL NO. 1 T.28S. R.5E. W.M.  
DOUGLAS COUNTY

1" = 200'

REVISED ON

28 5E 00  
DETAIL MAP 1

SEE MAP 28 5E 00

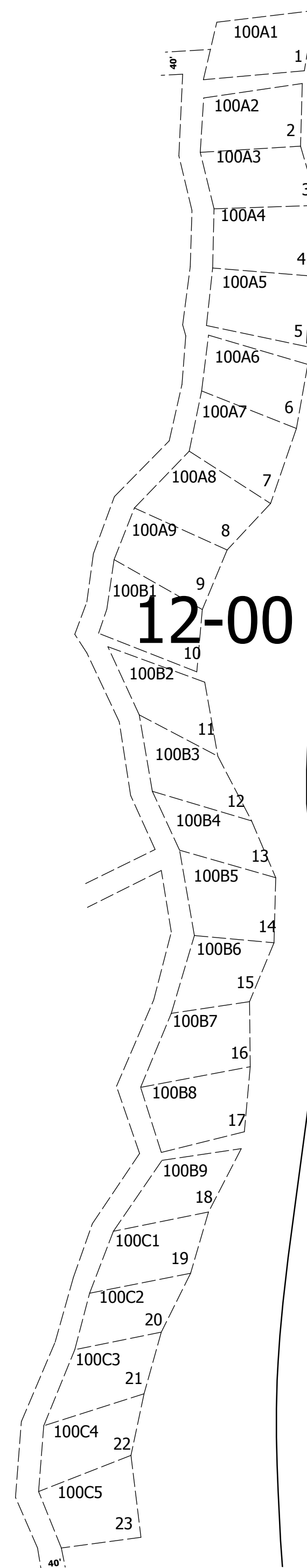
CEN|SEC

1/4|COR

CANCELLED NO'S

SEE MAP 28 5E 00

SEE MAP 28 6E 00



1/4|COR

1 6  
12 7

SEE MAP 28 5E 00 DETAIL NO. 2

28 5E 00  
DETAIL MAP 1

THIS MAP WAS PREPARED FOR ASSESSMENT PURPOSE ONLY.

DETAIL NO. 2 T.28S. R.5E. W.M.  
DOUGLAS COUNTY  
1" = 200'

REVISED ON

28 5E 00  
DETAIL MAP 2

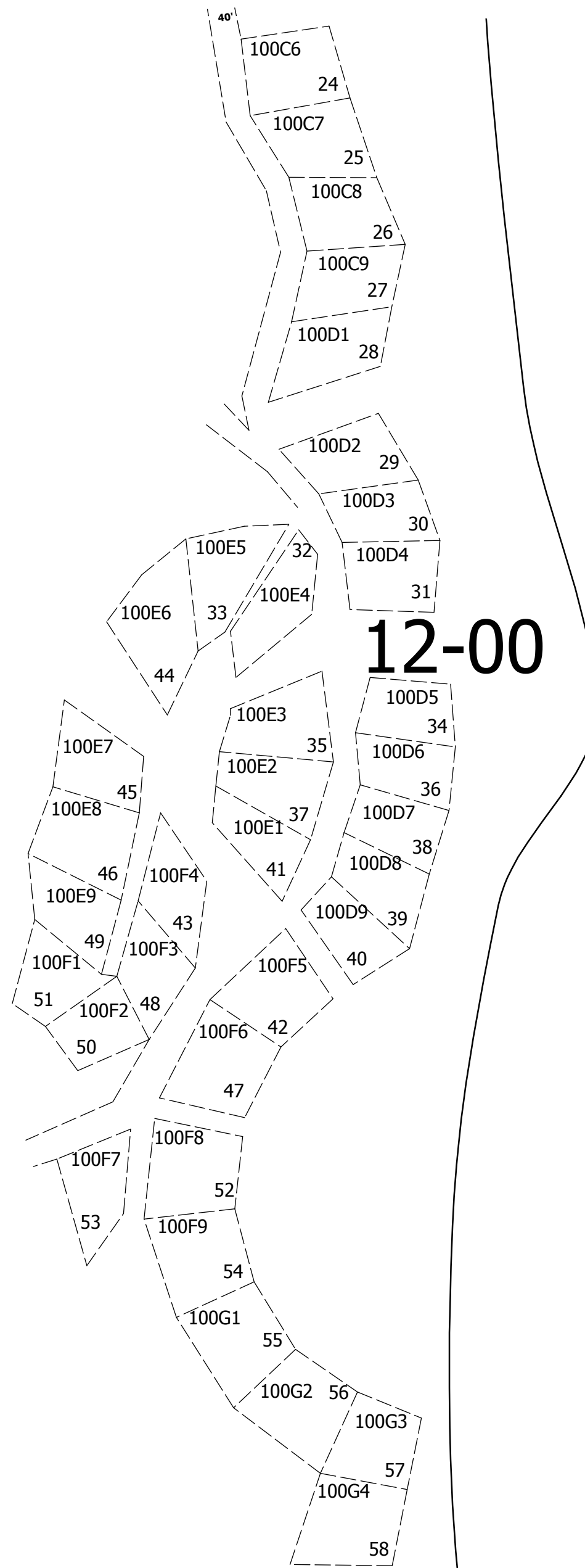
1/4 COR

SEE MAP 28 5E 00 DETAIL NO. 1

1 6  
12 7

CANCELLED NO'S

SEE MAP 28 5E 00



SEE MAP 28 6E 00

CEN SEC

SEE MAP 28 05E 00 DETAIL NO. 3

1/4 COR

28 5E 00  
DETAIL MAP 2

THIS MAP WAS PREPARED FOR ASSESSMENT PURPOSE ONLY.

DETAIL NO. 3 T.28S. R.5E. W.M.  
DOUGLAS COUNTY  
1" = 200'

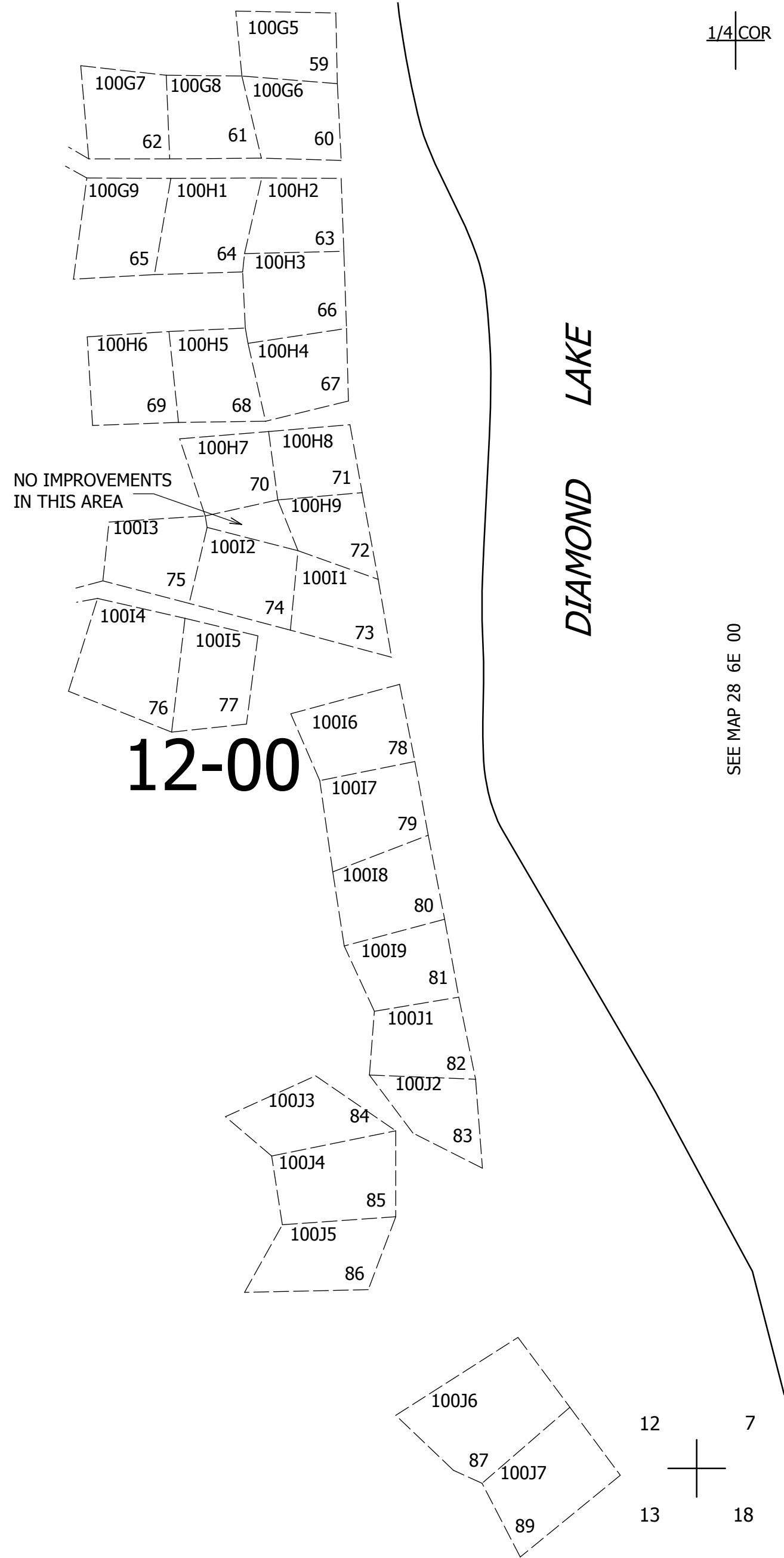
REVISED ON  
4-30-01

28 5E 00  
DETAIL MAP 3

CEN|SEC

SEE MAP 28 5E 00 DETAIL NO. 2

1/4|COR



1/4|COR

12 7  
13 18

28 5E 00  
DETAIL MAP 3

THIS MAP WAS PREPARED FOR  
ASSESSMENT PURPOSE ONLY.

DETAIL NO. 4 T.28S. R.5E. W.M.  
DOUGLAS COUNTY  
1" = 200'

REVISED ON

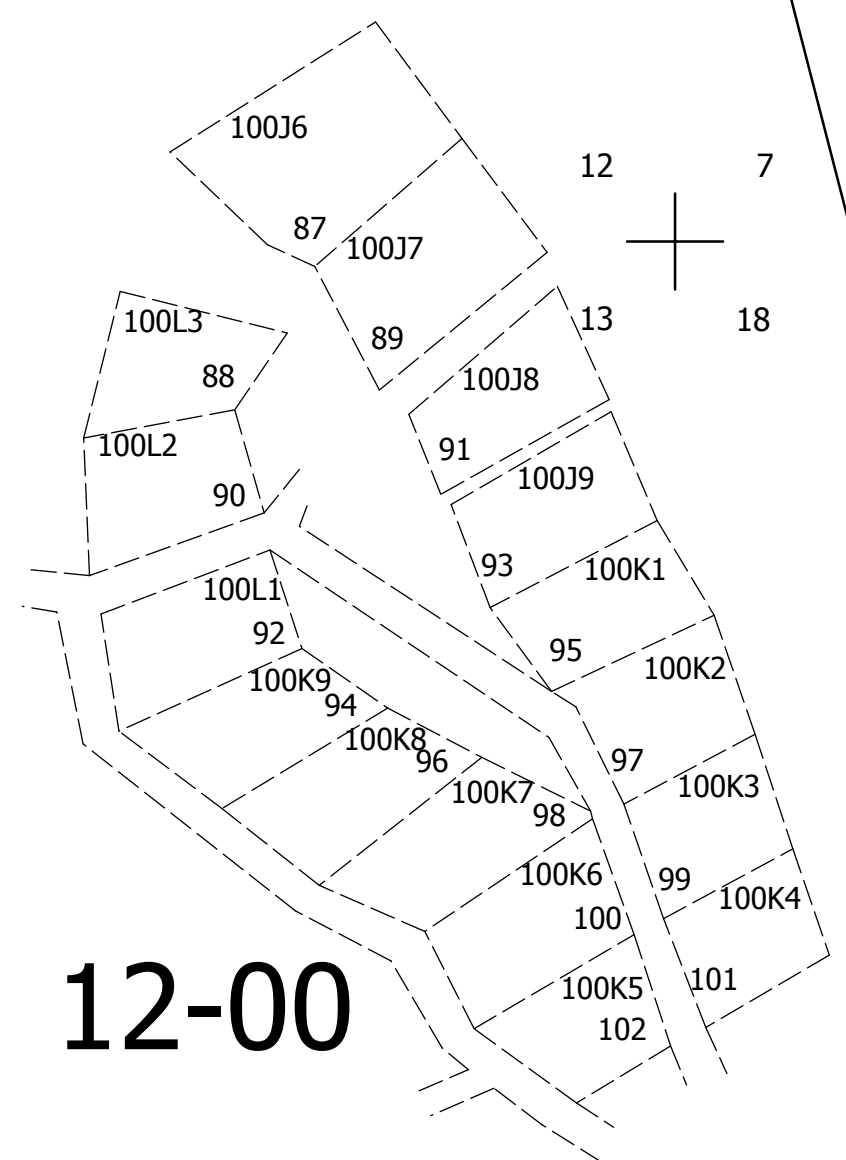
28 5E 00  
DETAIL MAP 4

CANCELLED NO'S

1/4 COR

SEE MAP 28 5E 00 DETAIL NO. 3

SEE MAP 28 5E 00



DIAMOND LAKE

SEE MAP 28 5VE 00

SEE MAP 28 05E 00

CEN SEC

1/4 COR

28 5E 00  
DETAIL MAP 4