

THIS MAP WAS PREPARED FOR ASSESSMENT PURPOSE ONLY.

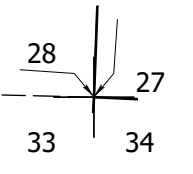
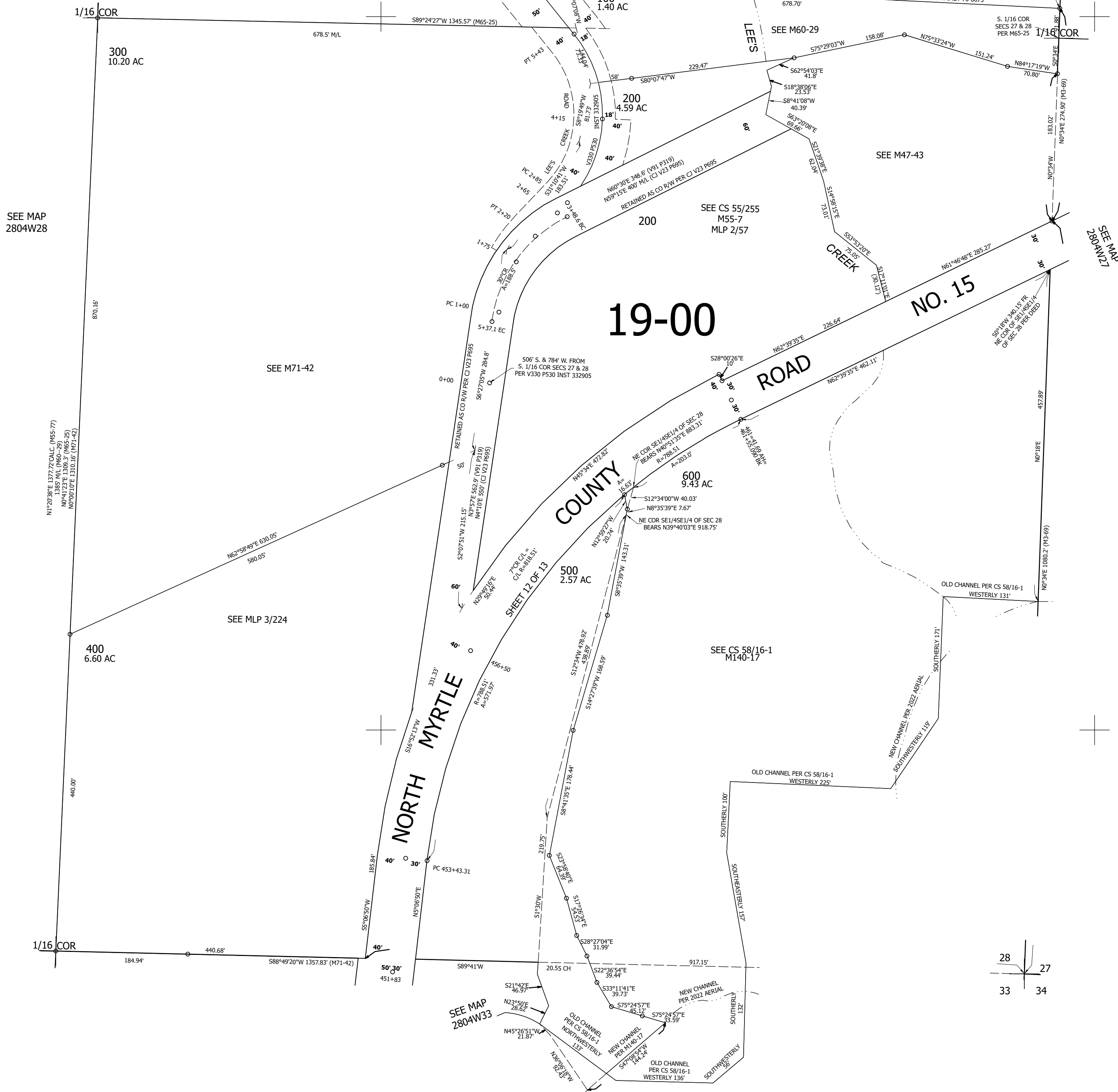
Upper Left:  
123°10'27"W 43°6'9"N  
4207268E 534663N ft

SE1/4 SE1/4 SEC.28 T.28S. R.04W. W.M.  
DOUGLAS COUNTY  
1" = 100'

Date Exported 2025-07-24

280428DD

CANCELLED NOS:  
601 501



280428DD

Lower Right:  
123°9'59"W 43°5'52"N  
4209243E 532924N ft