

THIS MAP WAS PREPARED FOR ASSESSMENT PURPOSE ONLY.

Upper Left:  
123°11'33"W 43°6'54"N  
4202523E 539368N ft

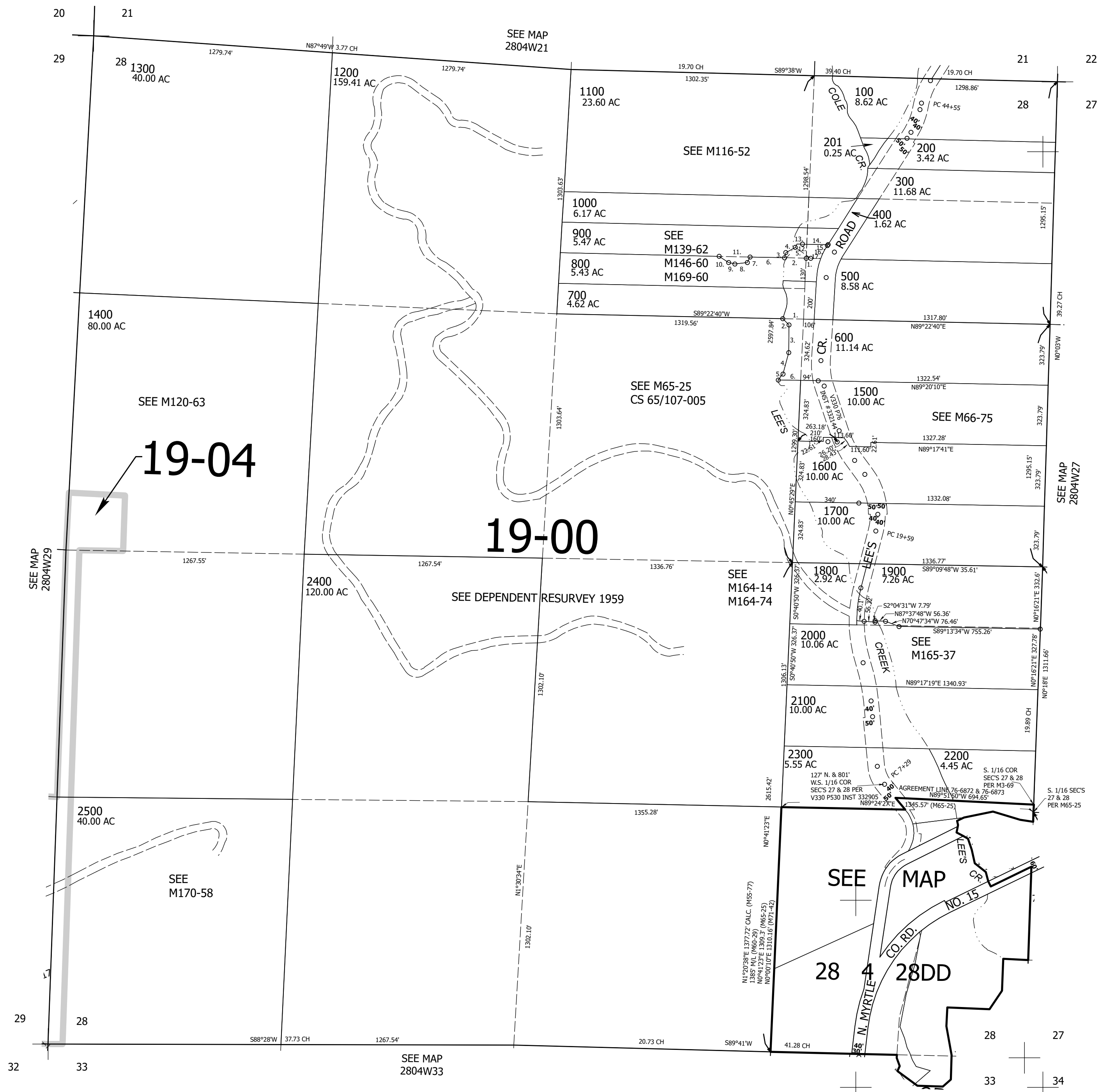
SEC.28 T.28S. R.04W. W.M.  
DOUGLAS COUNTY  
1" = 400'

Date Exported 2023-12-04

CANCELLED NOS:  
201M1 201M2 1100M1  
1100M2 1300M1 2400M1  
801 901 1901  
2001 902 1501  
1601

- PARCELS 800 & 900
1. N89°30'04"E 24.91'  
(S89°22'38"W 25')
  2. S89°28'38"W 115'
  3. N11°48'19"E 27.79'
  4. N58°47'51"E 58.1'
  5. N56°21'34"W 101.73'  
(S56°30'19"E 101.47')
  6. S89°28'38"W 184.14'
  7. S25°48'14"W 33.84'
  8. S81°28'25"W 66.04'
  9. N79°55'49"W 34.81'
  10. N57°58'31"W 61.6'
  11. N89°28'38"E 166.55'
  12. N25°02'13"E 19.53'
  13. N89°17'10"E 29.77'
  14. N89°17'10"E 143.94'
  15. S30°55'41"W 5.56'
  16. A=77.72' R=336.49'  
LC= S24°18'40"W 77.55'
  17. S89°17'10"W 62.5'

- PARCEL 600
1. S89°22'40"W 105.9'
  2. S39°25'28"E 48.6'
  3. S51°38'15"E 154.68'
  4. S11°18'51"W 103.88'
  5. S37°57'32"W 40.23'
  6. N89°20'14"E 112.4'



Lower Right:  
123°9'44"W 43°5'48"N  
4210372E 532413N ft