

THIS MAP WAS PREPARED FOR ASSESSMENT PURPOSE ONLY.

REVISED ON 5-26-92

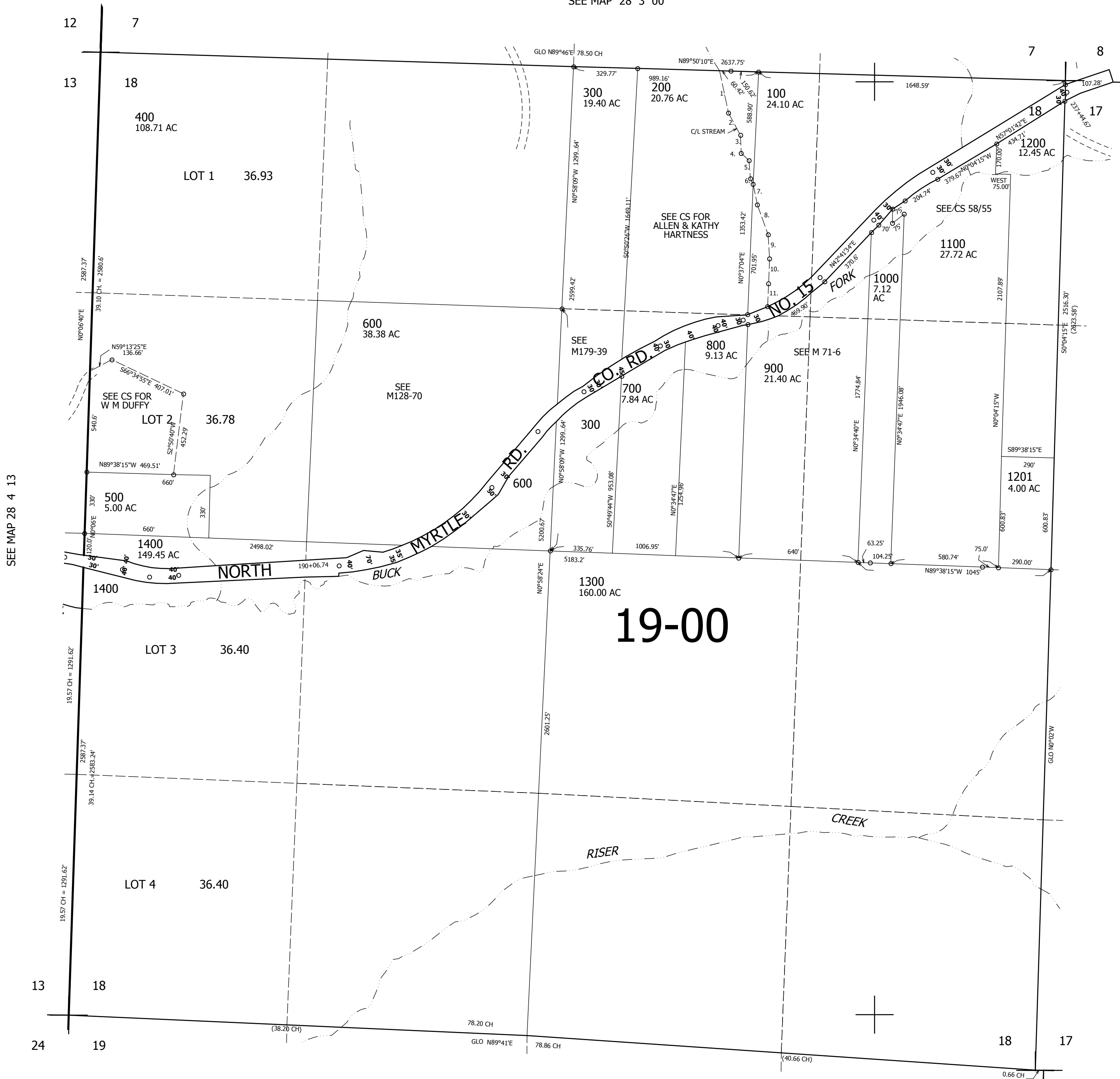
28 3 18

SEC.18 T.28S. R.3W. W.M. DOUGLAS COUNTY

1" = 400'

SEE MAP 28 3 00

CANCELLED NO'S



- C/L STREAM
1. S15°31'E 226.61'
 2. S24°15'45"E 136.19'
 3. S8°15'45"E 93.1'
 4. S44°22'E 64.29'
 5. S8°31'20"E 107.49'
 6. S10°10'10"E 22.29'
 7. S10°10'10"E 121.85'
 8. S21°20'E 149.18'
 9. S6°02'20"E 137.03'
 10. S1°04'54"E 134.49'
 11. S0°41'15"E 134.67'

SEE MAP 28 4 13

SEE MAP 28 3 00

19-00

543,000

SEE MAP 28 3 00

4,229,000

28 3 18