

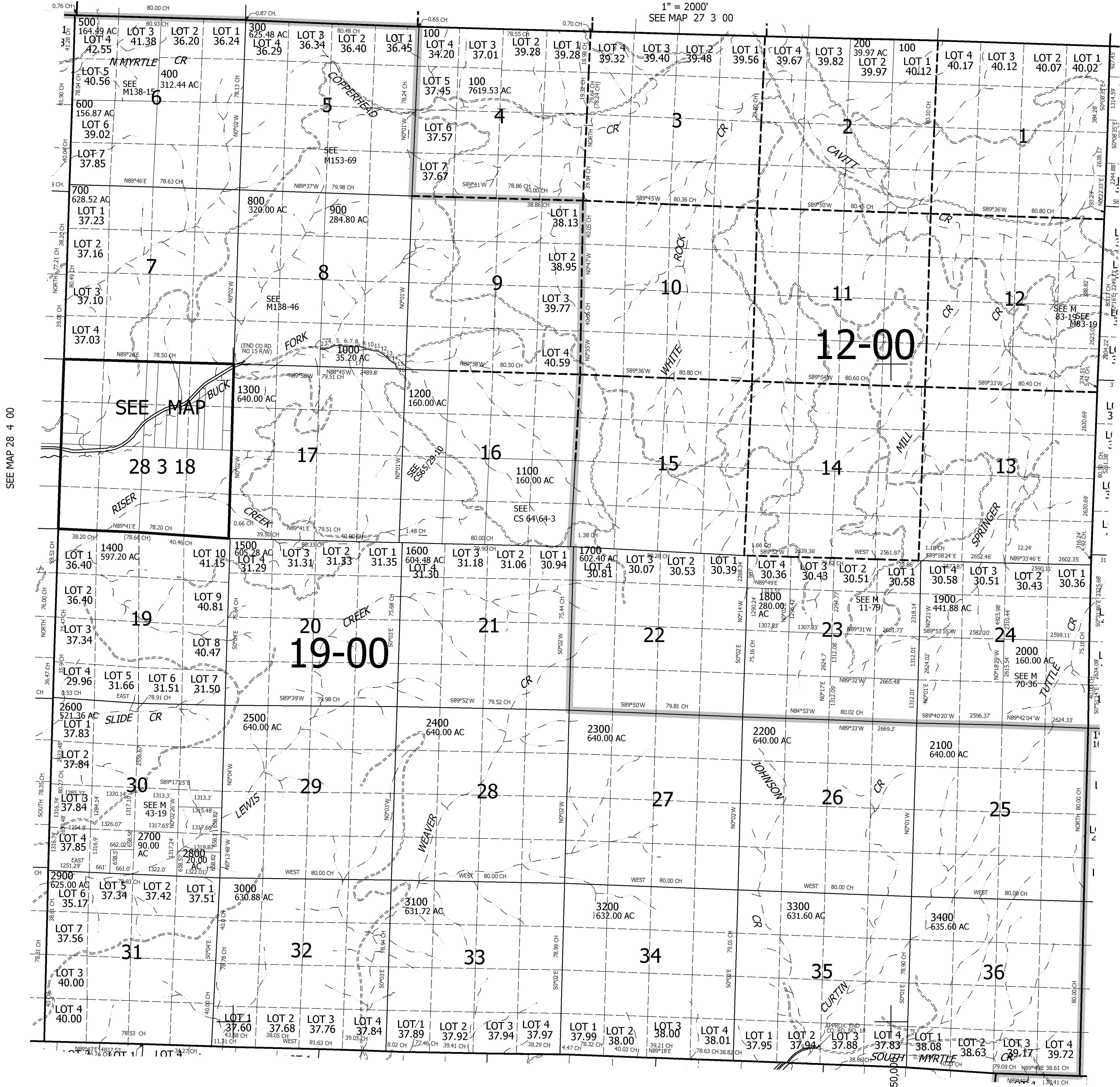
THIS MAP WAS PREPARED FOR ASSESSMENT PURPOSE ONLY.

T.28S. R.3W. W.M. DOUGLAS COUNTY

REVISED ON

28 3 00 & INDEX

1" = 2000'
SEE MAP 27 3 00



CANCELLED NO'S
100M1 100M2 100M3
100M4 100M5 100M6
400M1

- PARCEL 1000
1. NORTH 685.1'
 2. S89°E 200'
 3. N86°E 120'
 4. N68°E 200'
 5. EAST 200'
 6. S82°E 200'
 7. S88°E 160'
 8. N83°E 170'
 9. S69°E 200'
 10. S75°E 200'
 11. S81°E 200'
 12. S60°E 200'
 13. S43°E 200'
 14. S55°E 270'
 15. S22°E 200'
 16. S41°E 99'
 17. N88°45'W 2489.8'

528,000

28 3 00 & INDEX

SEE MAP 29 3 00

SEE MAP 29 2 00