

THIS MAP WAS PREPARED FOR ASSESSMENT PURPOSE ONLY.

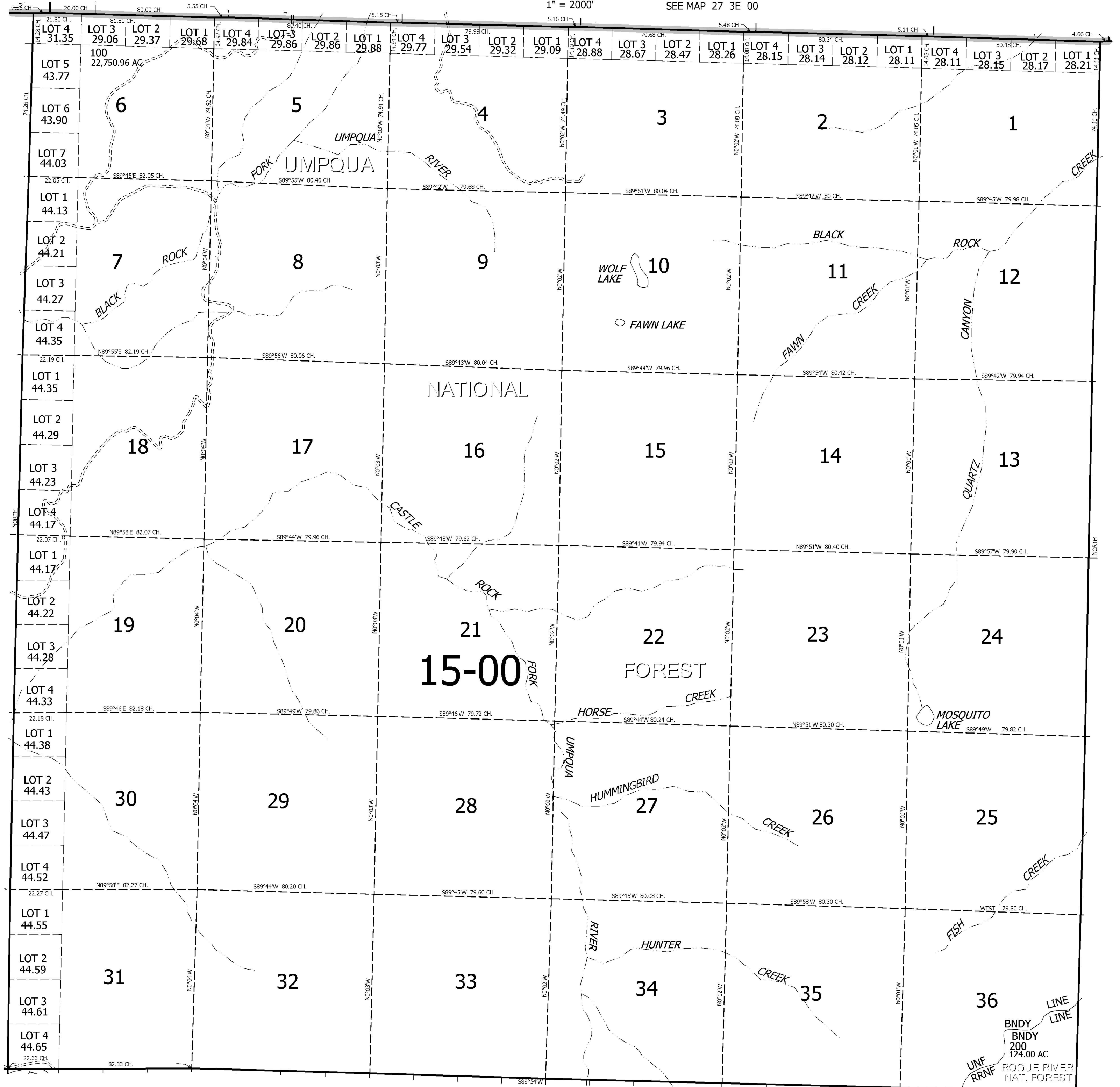
T.28S. R.3E. W.M. DOUGLAS COUNTY

REVISED ON

28 3E 00

1" = 2000'

SEE MAP 27 3E 00



SEE MAP 28 2E 00

SEE MAP 28 4E 00

SEE MAP 29 3E 00

28 3E 00