

THIS MAP WAS PREPARED FOR ASSESSMENT PURPOSE ONLY.

T.28S. R.2E. W.M.  
DOUGLAS COUNTY  
1" = 2000'

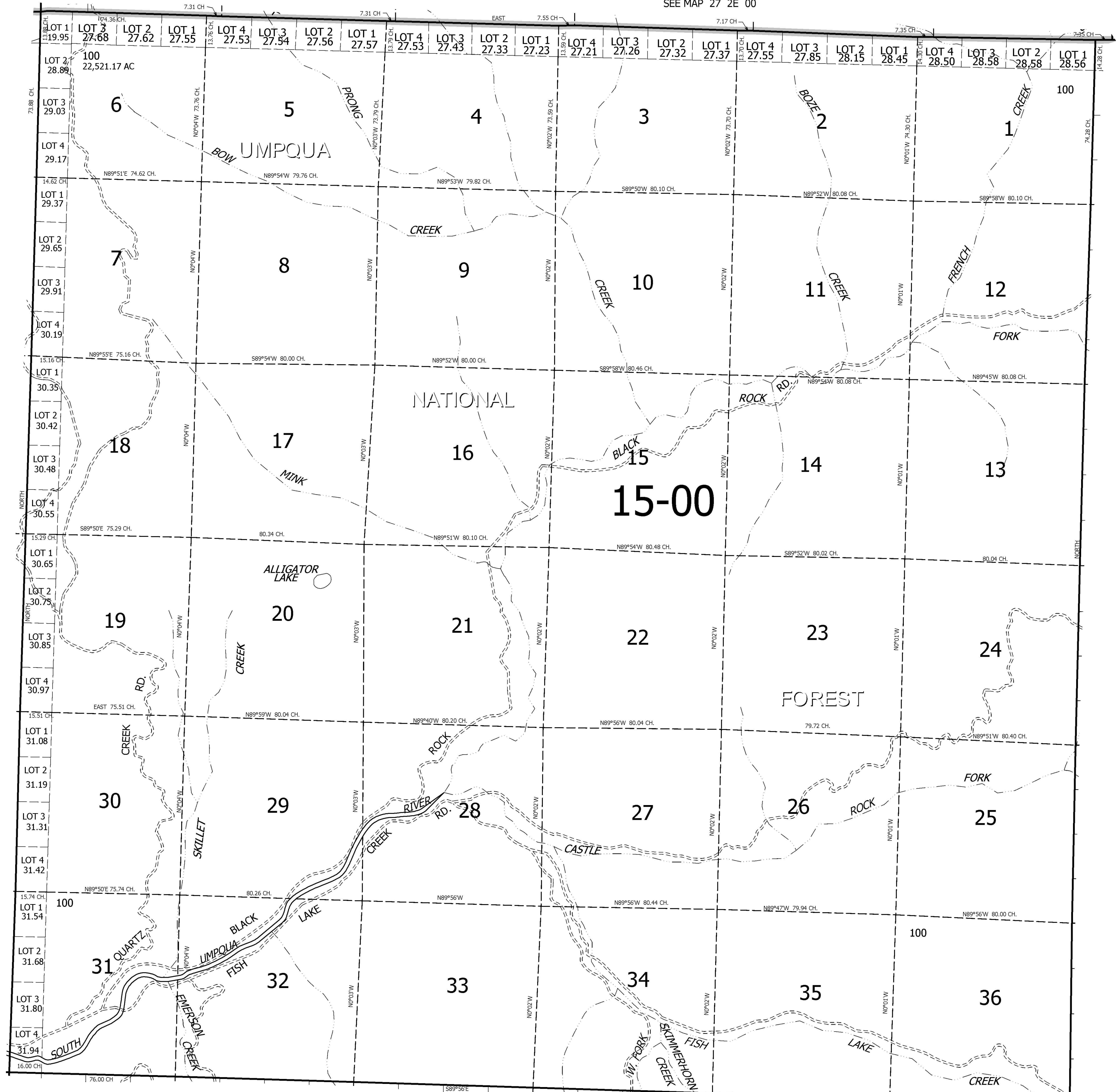
REVISED ON

28 2E 00

SEE MAP 27 2E 00

SEE MAP 28 1E 00

SEE MAP 28 3E 00



SEE MAP 29 2E 00

28 2E 00