

THIS MAP WAS PREPARED FOR ASSESSMENT PURPOSE ONLY.

T.28S. R.1W. W.M. DOUGLAS COUNTY

REVISED ON

28 1 00

1" = 2000'
SEE MAP 27 1 00

CANCELLED NO'S

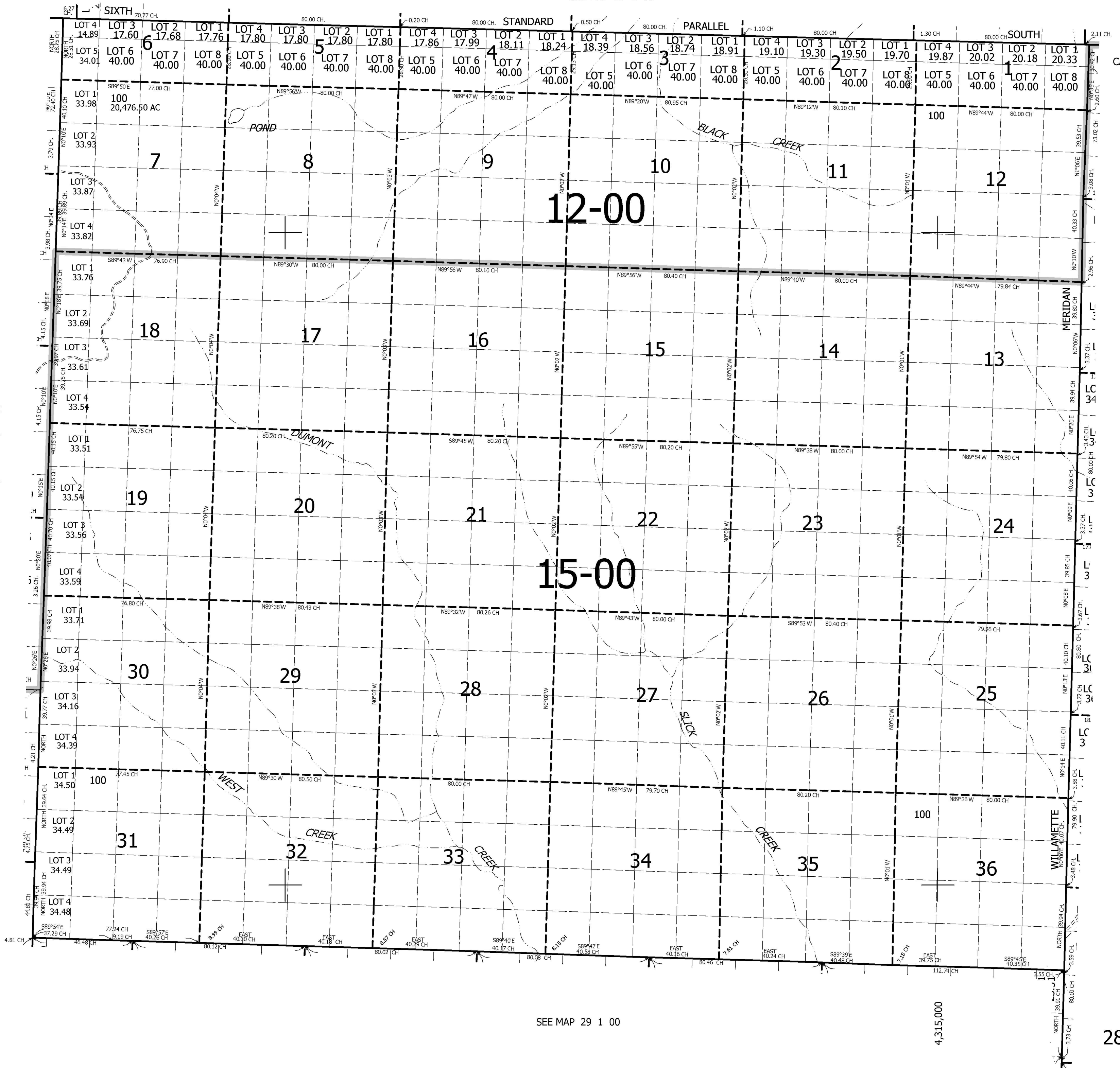
SEE MAP 28 2 00

SEE MAP 28 1E 00

530,000

4,315,000

28 1 00



SEE MAP 29 1 00