

THIS MAP WAS PREPARED FOR ASSESSMENT PURPOSE ONLY.

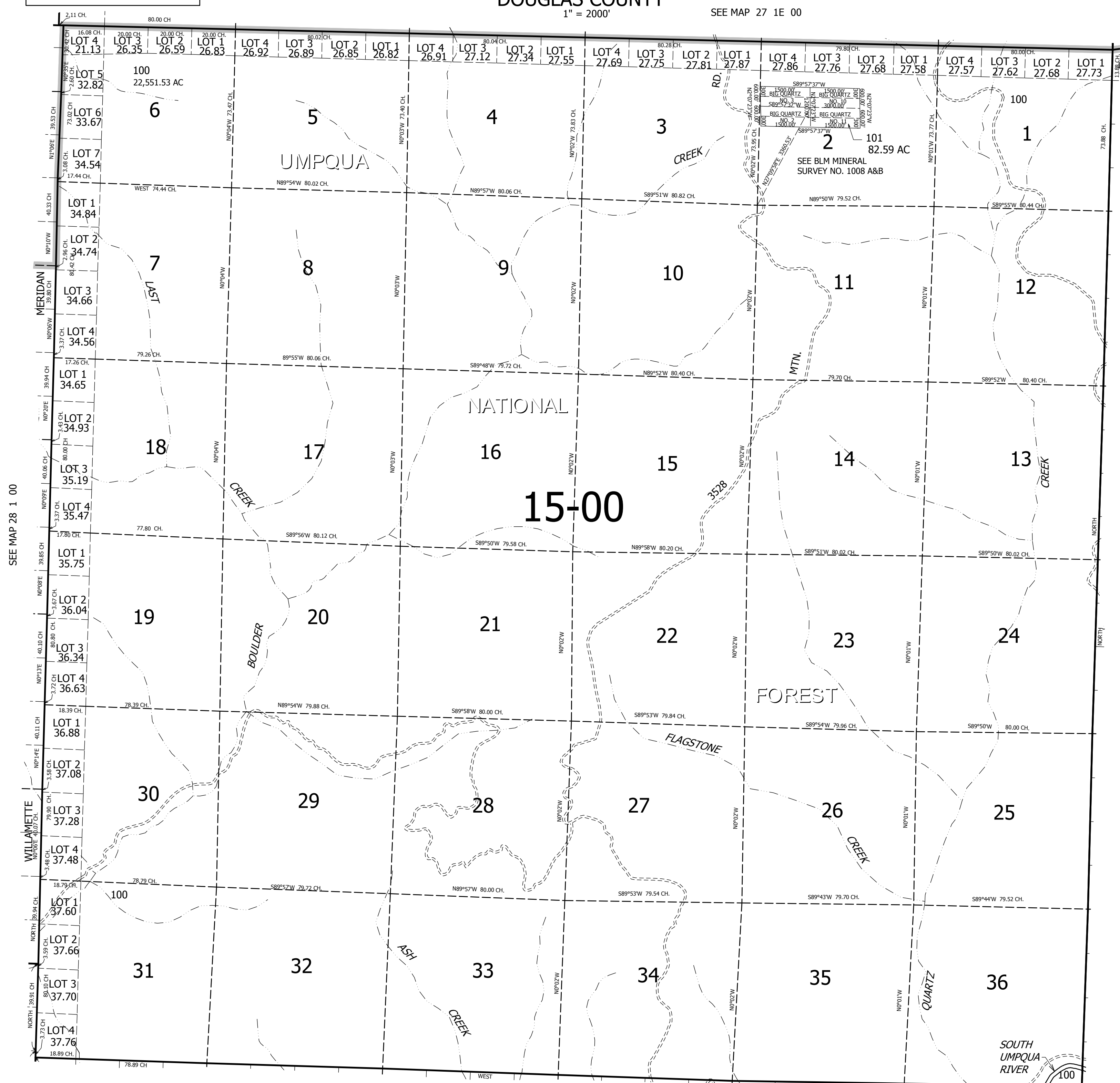
T.28S. R.1E. W.M. DOUGLAS COUNTY

REVISED ON 12-28-11

28 1E 00

1" = 2000'

SEE MAP 27 1E 00



CANCELLED NO'S

SEE MAP 28 1 00

SEE MAP 28 2E 00

SEE MAP 29 1E 00

28 1E 00