

THIS MAP WAS PREPARED FOR ASSESSMENT PURPOSE ONLY.

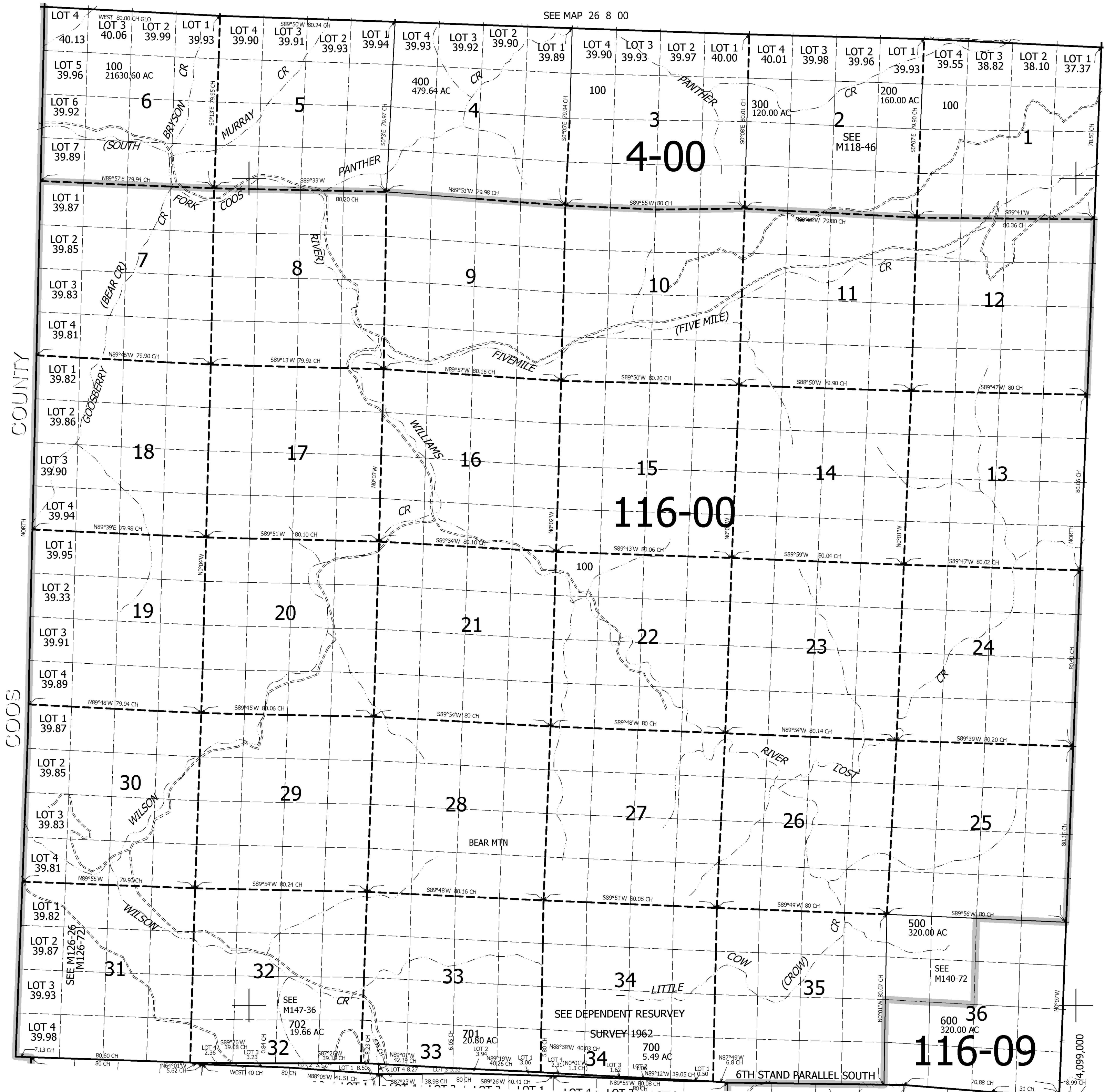
T.27 & 27 1/2S. R.8W. W.M.
DOUGLAS COUNTY

REVISED ON

27 8 00

1" = 2000'

SEE MAP 26 8 00



CANCELLED NO'S
200M1

SEE MAP 27 7 00

566,000

27 8 00