

THIS MAP WAS PREPARED FOR ASSESSMENT PURPOSE ONLY.

SW1/4 SEC.36 T.27S. R.7W. W.M.
DOUGLAS COUNTY

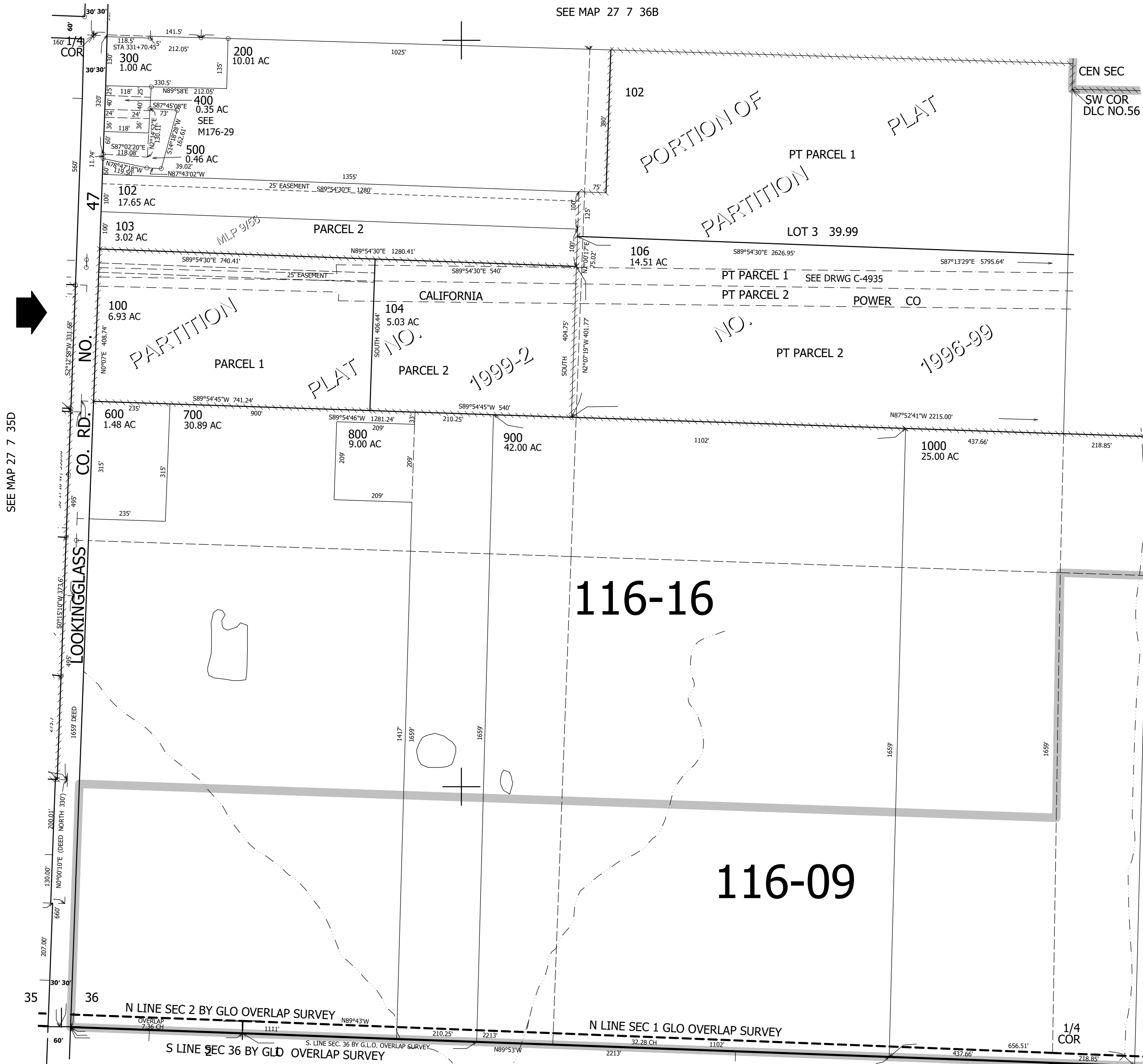
REVISED ON
7-15-19

27 7 36C

1" = 200'

CANCELLED NO'S
105 101 201

SEE MAP 27 7 36B



SEE MAP 27 7 36

563,000

SEE MAP 28 7 1

4,128,000

27 7 36C