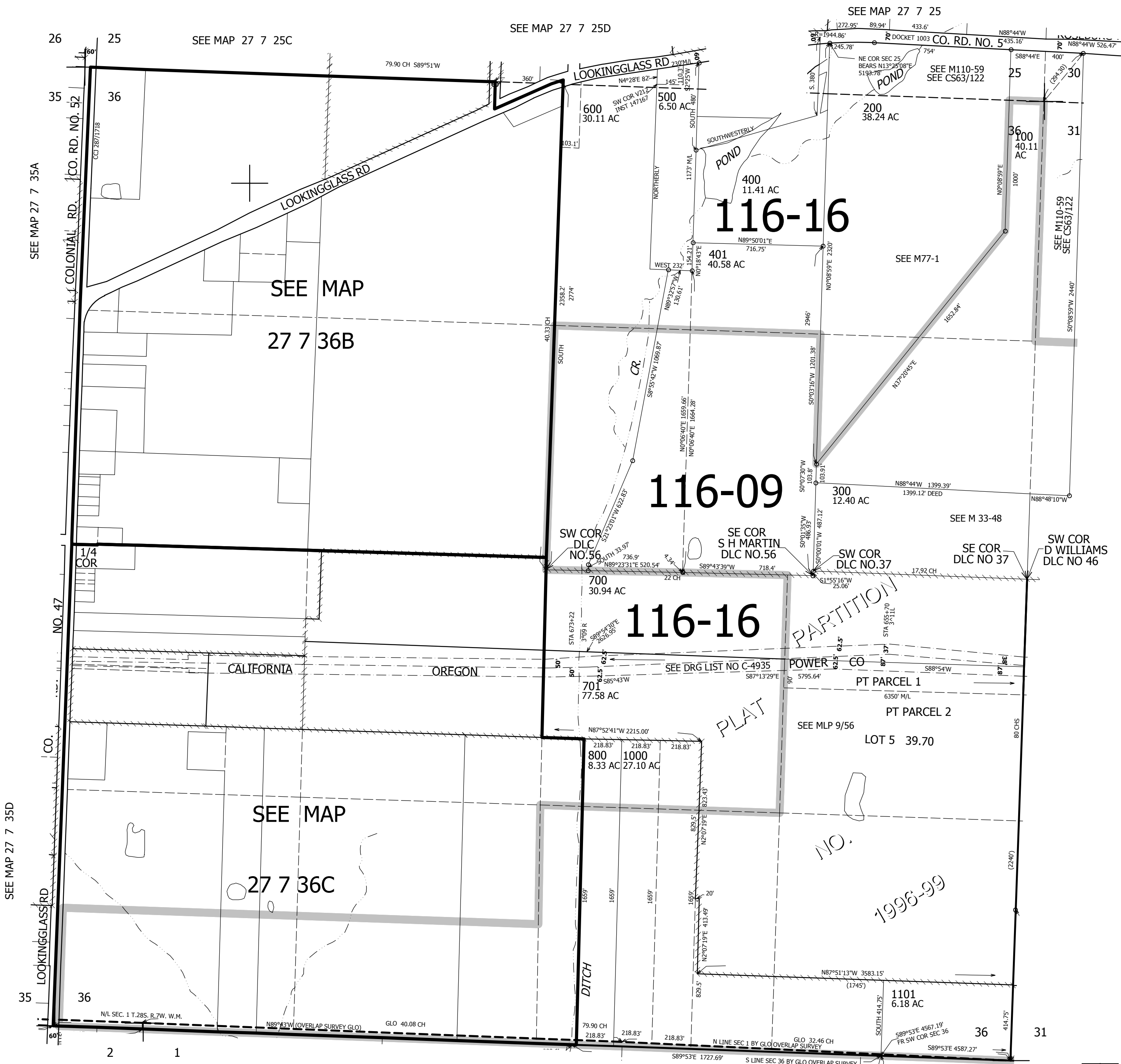


THIS MAP WAS PREPARED FOR ASSESSMENT PURPOSE ONLY.

SE1/4 SEC.36 T.27S. R.7W. W.M.
DOUGLAS COUNTY
1" = 400'

REVISED ON
5-29-18

27 7 36
& INDEX



CANCELLED NO'S
900 300M1 702
601 1100

SEE MAP 27 6 31

SEE MAP 28 7 1

1 6 562,000

4,131,000
27 7 36
& INDEX