

THIS MAP WAS PREPARED FOR ASSESSMENT PURPOSE ONLY.

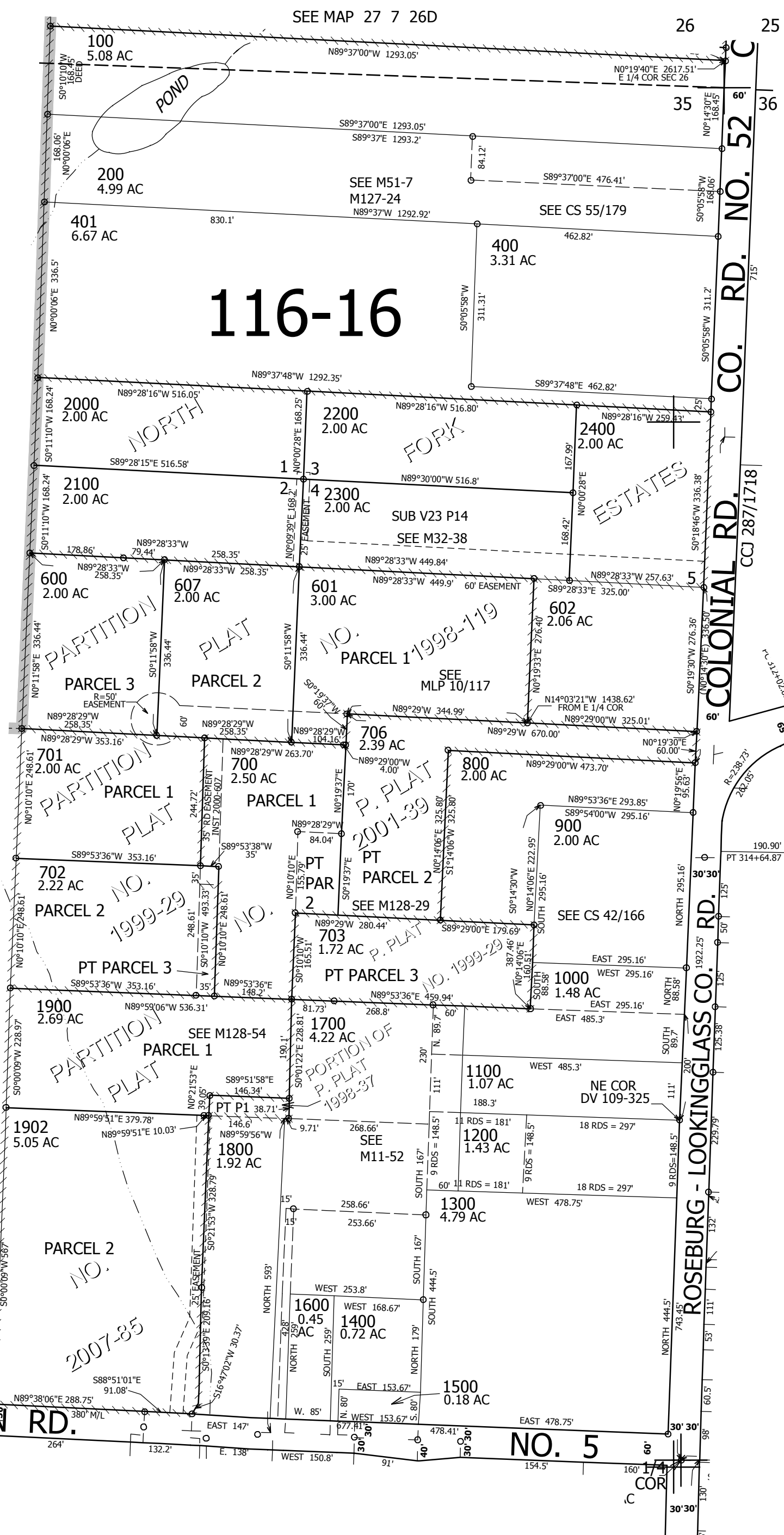
NE1/4 SEC.35 T.27S. R.7W. W.M. DOUGLAS COUNTY

REVISED ON 1-22-14

27 7 35A

1" = 200'

1/4 COR



CANCELLED NO'S
300 801 603
606 604 605
705 704 1801
1901 500

SEE MAP 27 7 35

SEE MAP 27 7 36B

SEE MAP 27 7 26D

ROSEBURG - LOOKINGGLASS CO. RD.

COLONIAL RD. NO. 52

4,125,000

565,000

SEE MAP 27 7 35D

27 7 35A