

THIS MAP WAS PREPARED FOR ASSESSMENT PURPOSE ONLY.

Upper Left:
123°34'13"W 43°11'14"N
4102682E 569189N ft

SEC.32 T.27S. R.07W. W.M.
DOUGLAS COUNTY
1" = 400'

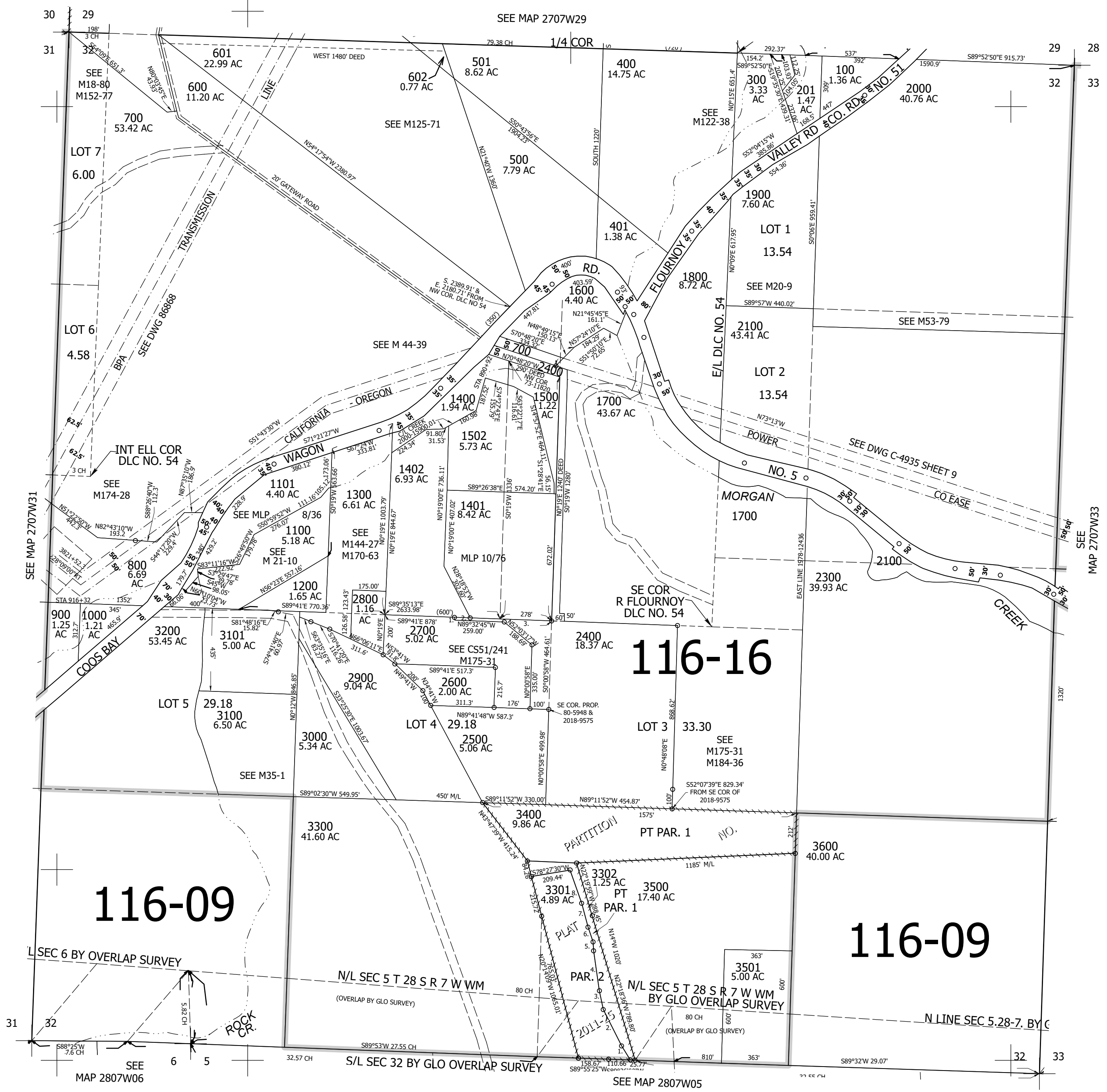
Date Exported 2024-11-07

270732

PARCEL 2400
1. N9°45'15"W 15.24'
2. S89°33'19"E 81.23'
3. S89°32'51"E 429.20'

P.P. 2011-25
1. N36°24'52"W 87.01'
2. N31°55'10"W 213.43'
3. N17°08'22"W 101.33'
4. N13°22'38"W 211.03'
5. N8°47'10"W 47.19'
6. N23°59'10"W 81.48'
7. N19°59'58"W 129.61'
8. N24°31'35"W 184.32'

CANCELLED NOS:
700M1 200 1600M1
2400M1 1501 2000M1
700M2 1600M2 1800M1
2100M1 2200M1 2400M2
2500M1 2600M1 2700M1
2800M1 3000M1 3300M1
3400M1 3301M1 3302M1
3500M1 3501M1 3600M1
503 502 504 1403 3303
3304 2801 1301 2200
2701 2401 2402



116-09

116-16

116-09

SEE MAP 2807W06

SEE MAP 2807W05

5 4

270732

Lower Right:
123°32'23"W 43°10'8"N
4110531E 562234N ft