

THIS MAP WAS PREPARED FOR ASSESSMENT PURPOSE ONLY.

Upper Left:
123°33'5"W 43°12'7"N
4107911E 574342N ft

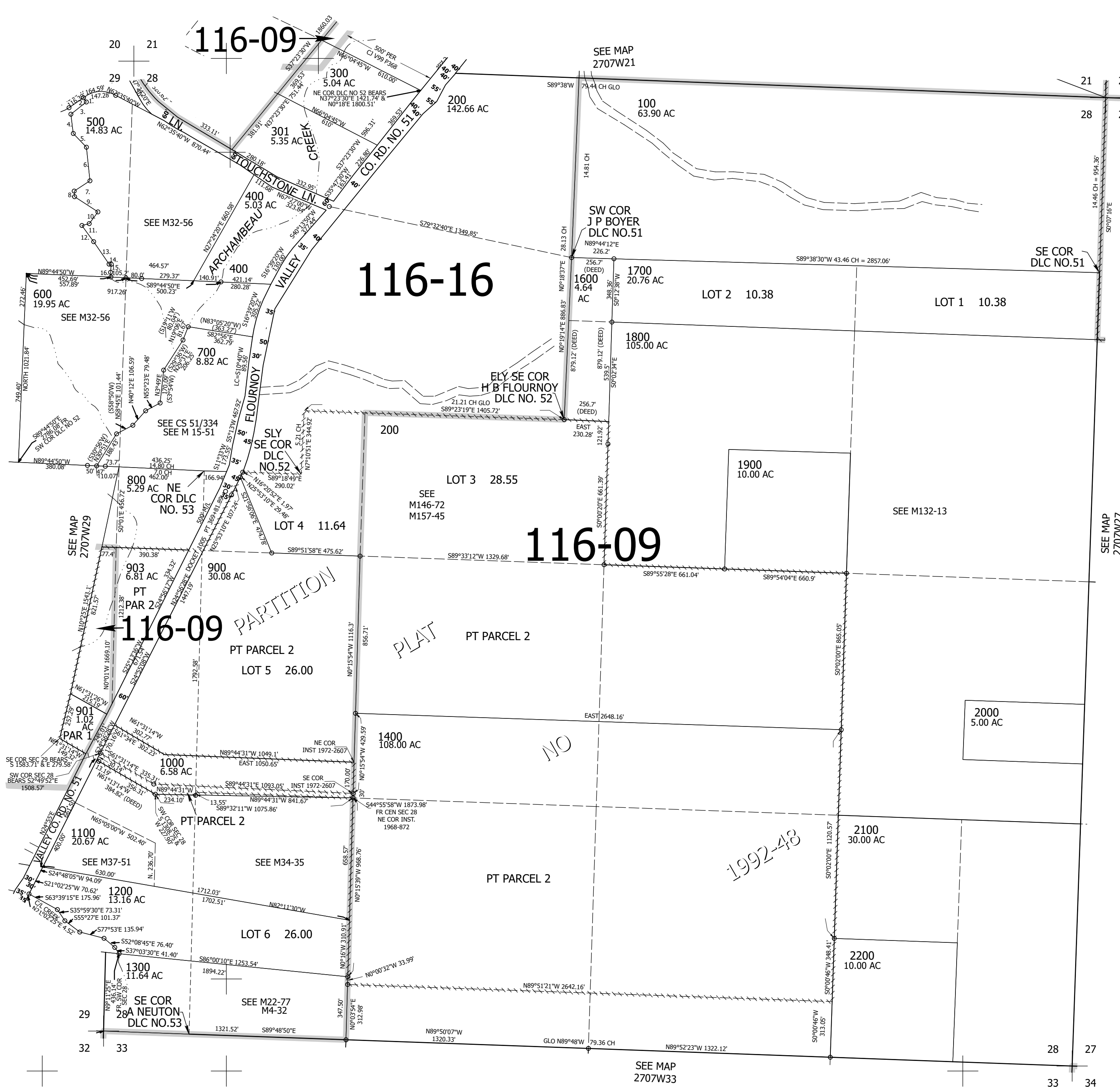
SEC.28 T.27S. R.07W. W.M.
DOUGLAS COUNTY
1" = 400'

Date Exported 2026-04-08

270728

- TAXLOT 500
1. S54°42'20"W 15'
 2. S10°16'30"E 17.89'
 3. S49°26'30"W 109.9'
 4. S9°13'30"E 104.8'
 5. S45°39'E 102.8'
 6. S7°51'30"E 176.9'
 7. S52°58'W 108.2'
 8. S9°31'E 28'
 9. S56°58'E 152'
 10. S32°55'30"W 80'
 11. S66°34'W 41.3'
 12. S38°51'E 104.3'
 13. S36°33'30"E 142.6'
 14. S76°6'30"E 7.9'
 15. S0°15'10"W 37.87'
 16. S0°15'10"W 32.41'

CANCELLED NOS:
902 1500 200M1
1800M1 904 905
906 1001 1101



270728

Lower Right:
123°31'15"W 43°11'1"N
4115760E 567386N ft