

THIS MAP WAS PREPARED FOR ASSESSMENT PURPOSE ONLY.

SE1/4 SEC.26 T.27S. R.7W. W.M.
DOUGLAS COUNTY
1" = 200'

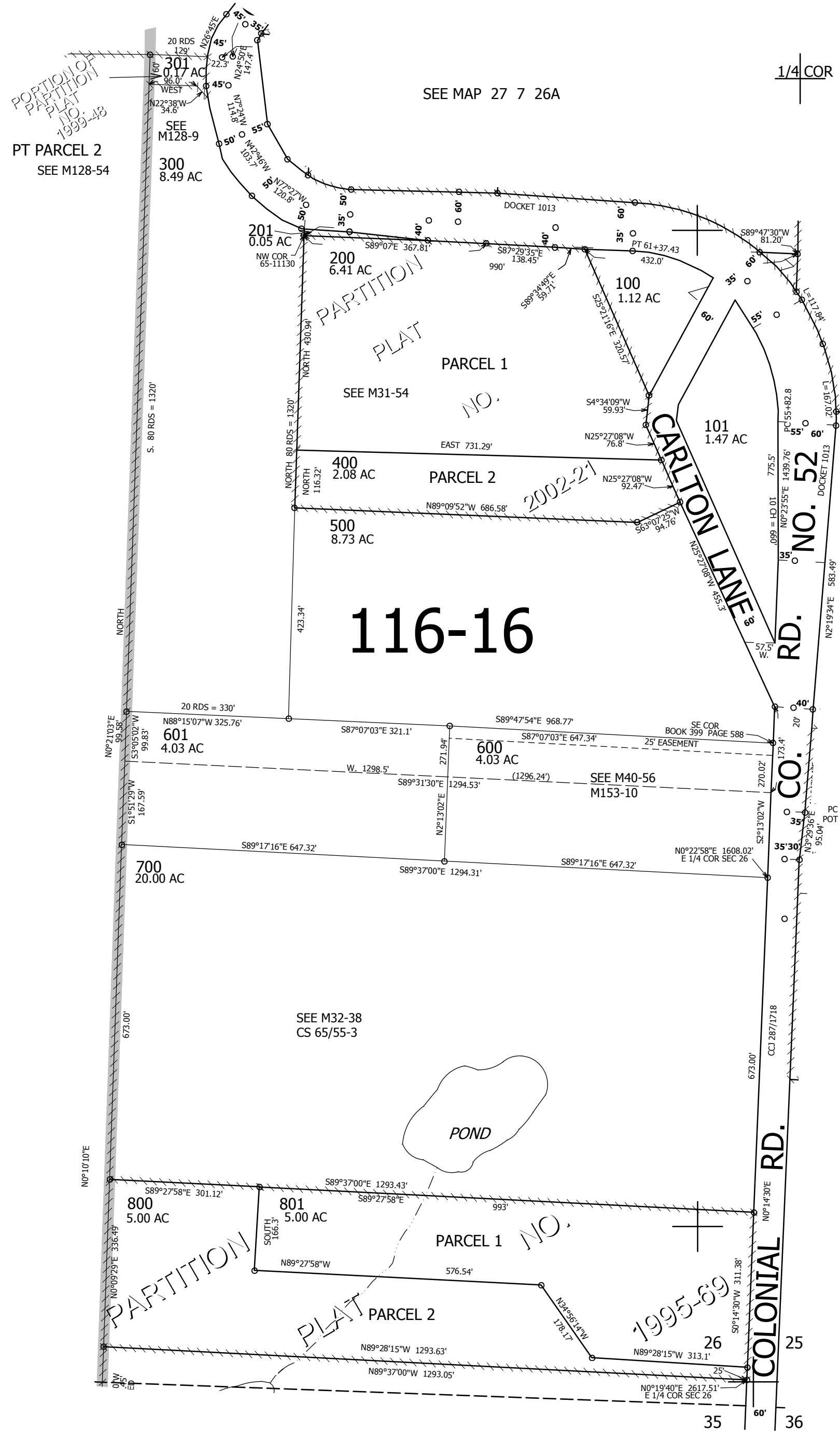
REVISED ON
1-24-14

27 7 26D

CANCELLED NO'S
401

CEN
|
+
|
SEC

1/4
|
COR
|



SEE MAP 27 7 26

SEE MAP 27 7 25C

1/4
|
COR
|

SEE MAP 27 7 35A

568,000

4,125,000

27 7 26D