

THIS MAP WAS PREPARED FOR ASSESSMENT PURPOSE ONLY.

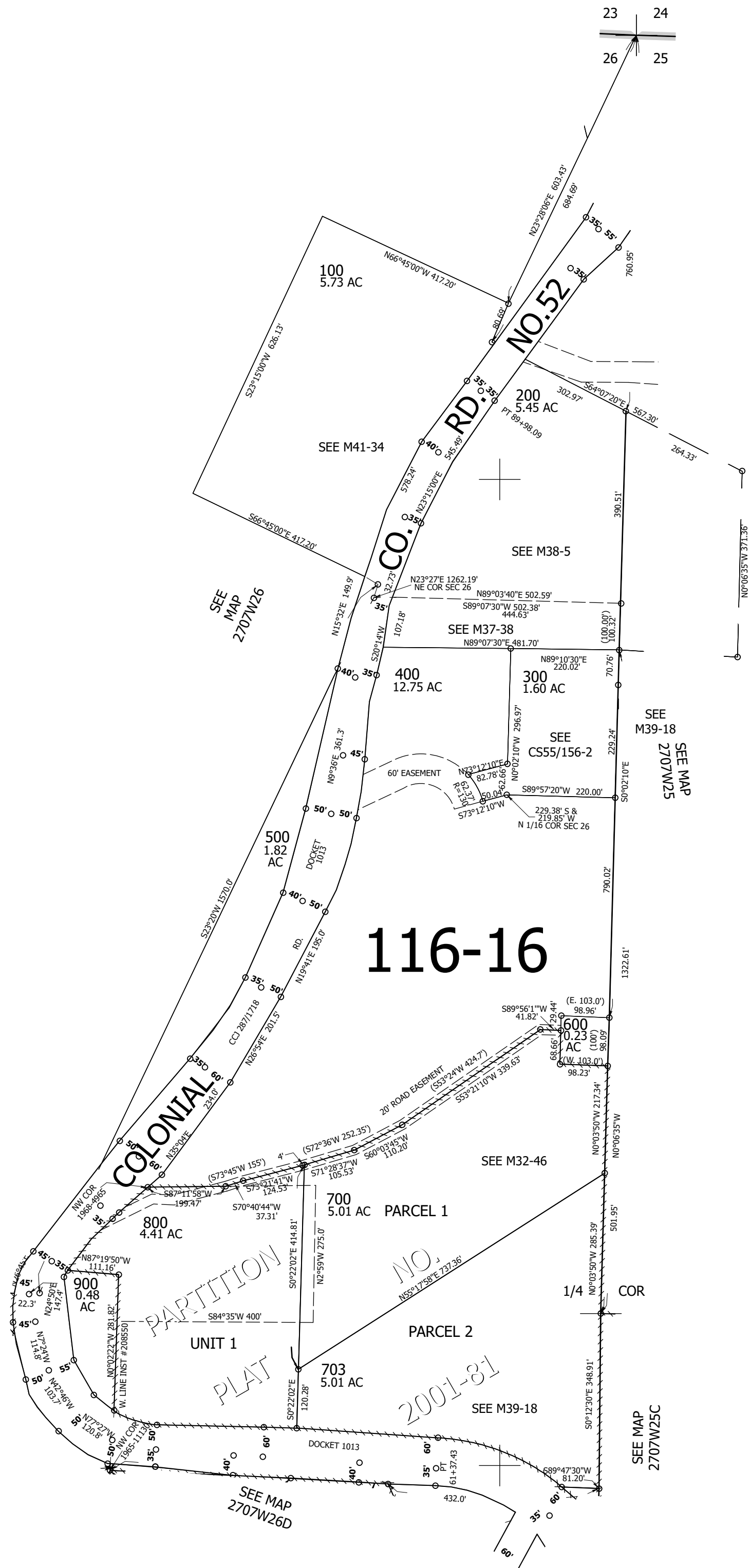
Upper Left:
123°29'43"W 43°12'N
4122805E 573107N ft

NE1/4 SEC.26 T.27S. R.07W. W.M.
DOUGLAS COUNTY
1" = 200'

Date Exported 2025-02-25

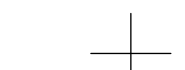
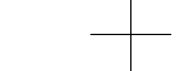
270726A

CANCELLED NOS:
701 702 801



116-16

PARTITION PLAT
NO. 2001-81



270726A

Lower Right:
123°28'48"W 43°11'27"N
4126729E 569630N ft