

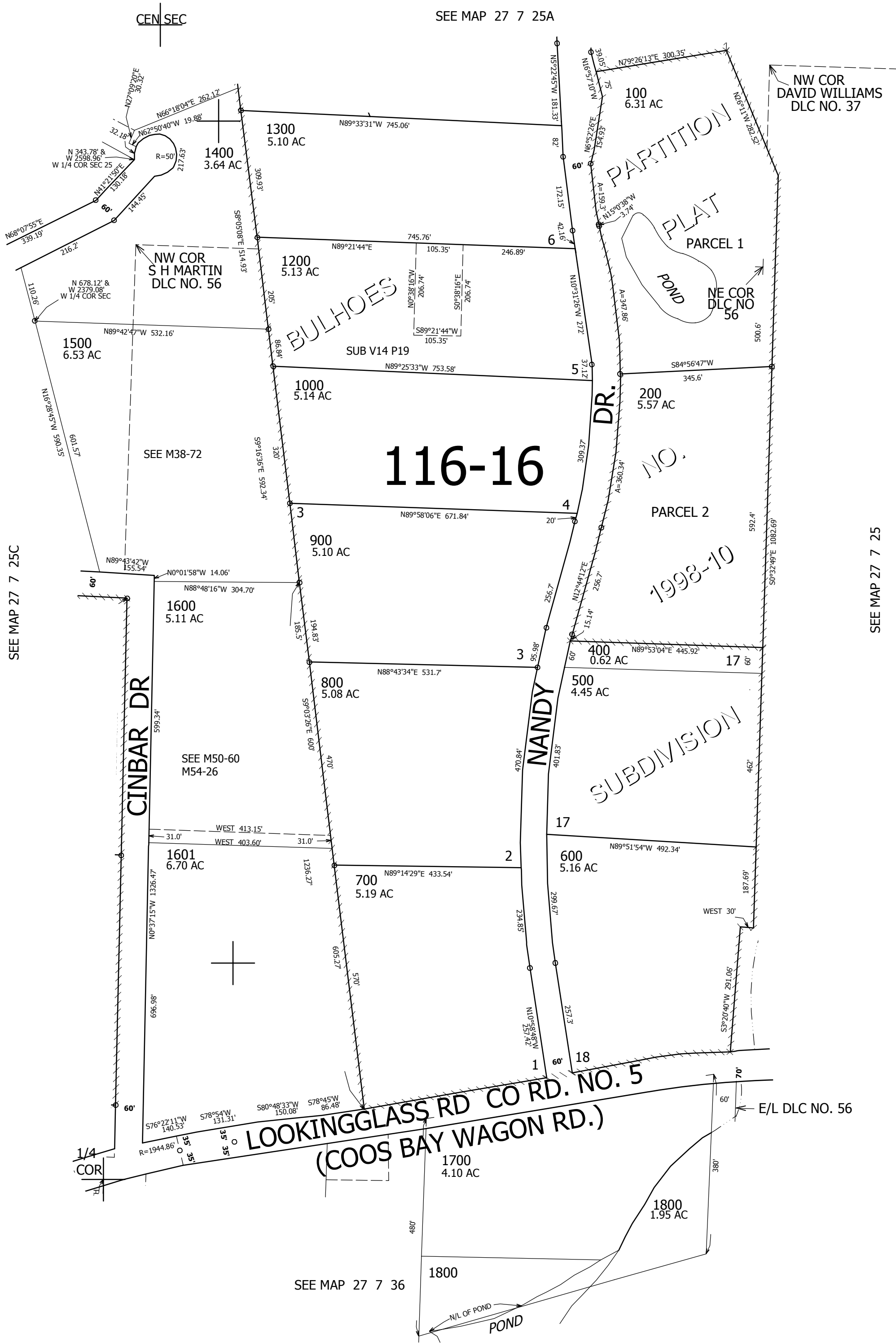
THIS MAP WAS PREPARED FOR ASSESSMENT PURPOSE ONLY.

SE1/4 SEC.25 T.27S. R.7W. W.M. DOUGLAS COUNTY

1" = 200'

REVISED ON 5-3-17

27 7 25D

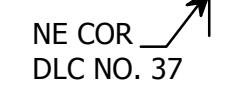


SEE MAP 27 7 25A

SEE MAP 27 7 25C

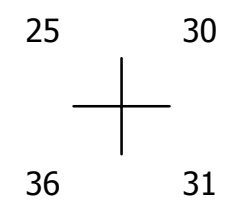
SEE MAP 27 7 25

SEE MAP 27 7 36



CANCELLED NO'S 100M1 200M1 300M1 1100

568,000



4,130,000

27 7 25D