

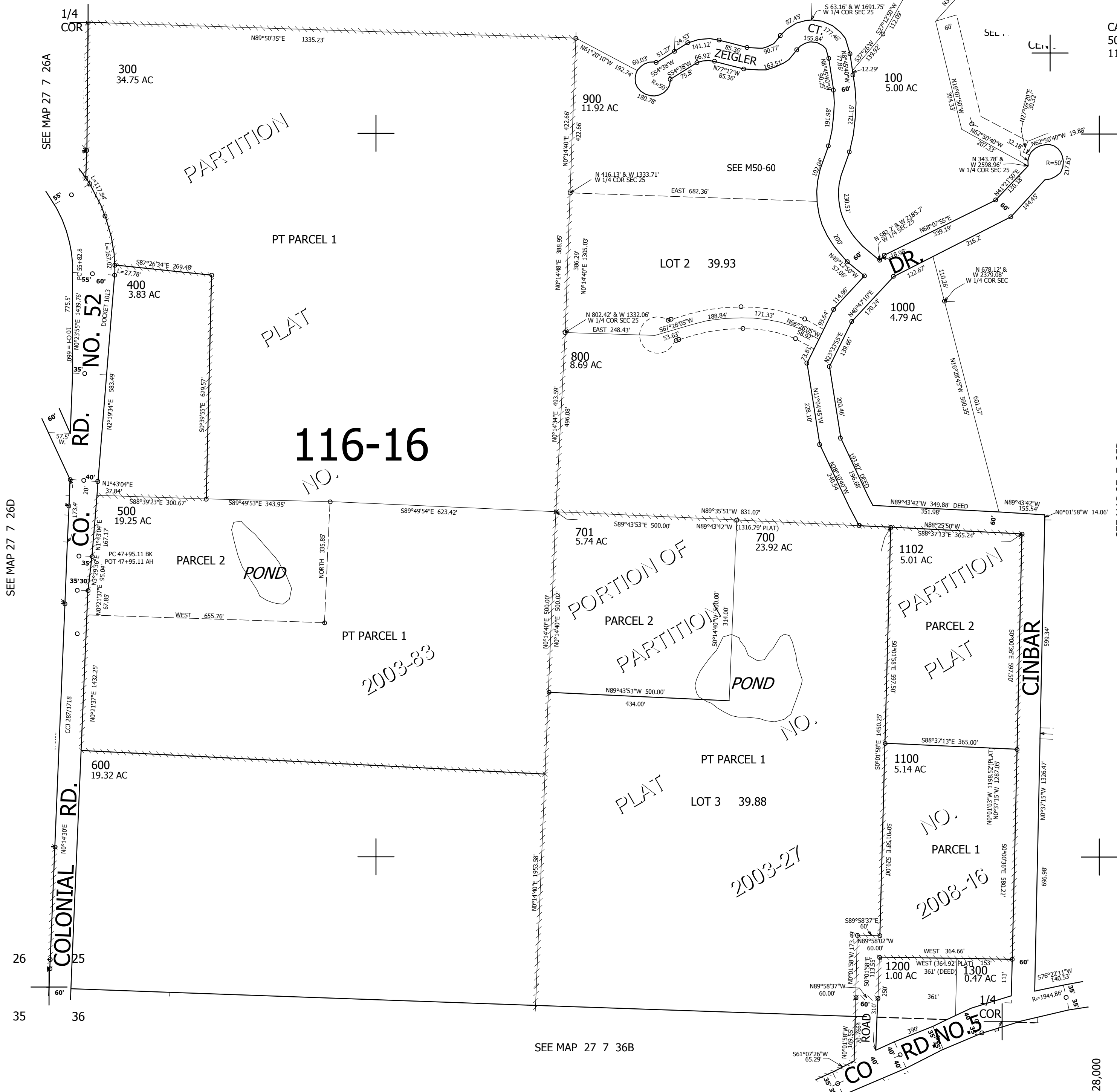
THIS MAP WAS PREPARED FOR ASSESSMENT PURPOSE ONLY.

SW1/4 SEC.25 T.27S. R.7W. W.M. DOUGLAS COUNTY

REVISED ON
1-24-14

27 7 25C

1" = 200'



CANCELLED NO'S
501 301 200
1101

SEE MAP 27 7 25D

568,000

4,128,000

27 7 25C