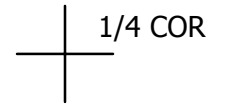
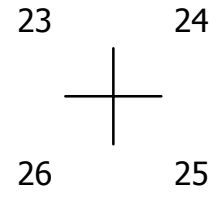


THIS MAP WAS PREPARED FOR ASSESSMENT PURPOSE ONLY.

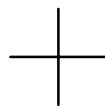
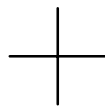
NW1/4 SEC.25 T.27S. R.7W. W.M.
DOUGLAS COUNTY
1" = 200'

REVISED ON
1-23-14

27 7 25B



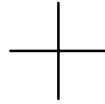
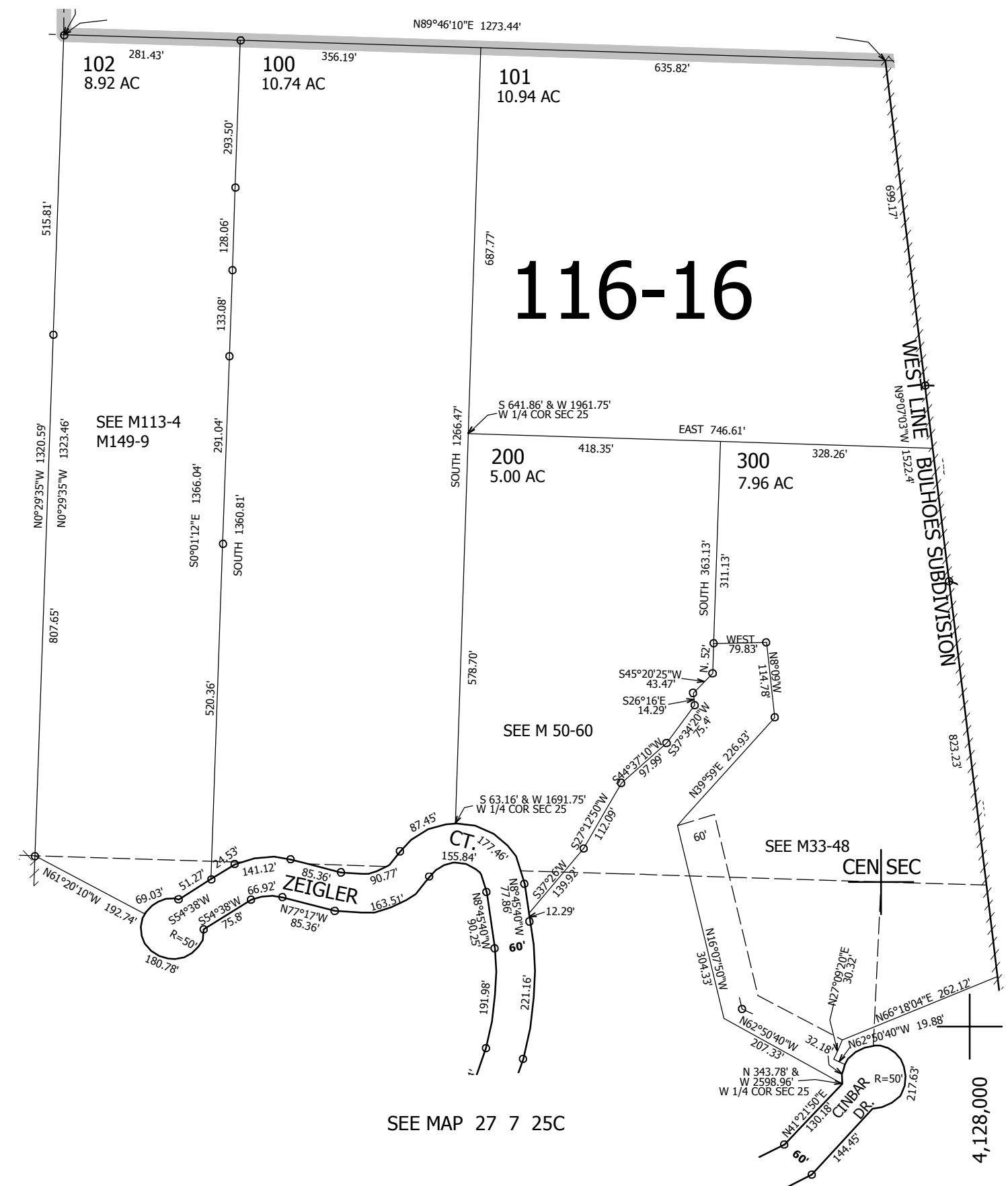
CANCELLED NO'S



SEE MAP 27 7 25

SEE MAP 27 7 25

SEE MAP 27 7 25A



SEE MAP 27 7 25C

570,000

4,128,000

27 7 25B