

THIS MAP WAS PREPARED FOR ASSESSMENT PURPOSE ONLY.

Upper Left:
123°28'46"W 43°12'30"N
4127162E 575993N ft

SE1/4 SEC.24 T.27S. R.07W. W.M.
DOUGLAS COUNTY
1" = 200'

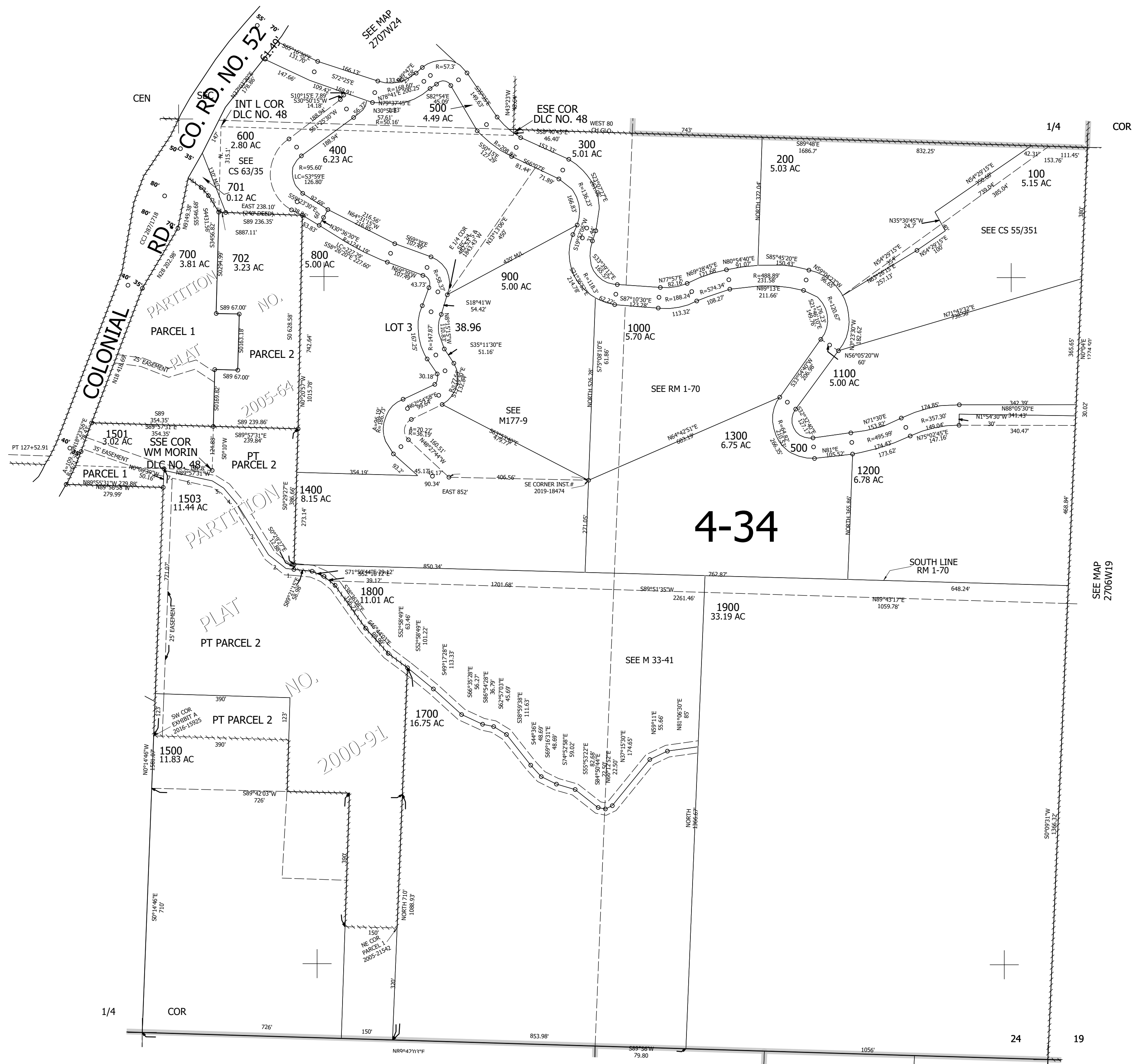
Date Expired: 4/18/2023 9:02 AM

270724D
&

CANCELLED NOS:
1502 1601 1504
901 1505 1506
1600

TAXLOT 701
1. S55°40'57"E 46.62'
2. S43°58'26"E 31.58'
3. S34°15'43"E 56.71'
4. S88°57'24"E 7.3'

PARCEL 1501
1. N89°21'15"W 21.17'
2. N54°04'20"W 62.53'
3. N34°03'21"W 173.58'
4. N42°18'39"W 60.53'
5. N60°31'03"W 39.25'
6. N80°01'39"W 143.98'
7. N0°00'39"W 5.13'



1/4

19
24
25
30

SEE MAP
2707W25

SEE MAP
2706W19

Lower Right:
123°27'51"W 43°11'57"N
4131087E 572515N ft

270724D
&