

THIS MAP WAS PREPARED FOR ASSESSMENT PURPOSE ONLY.

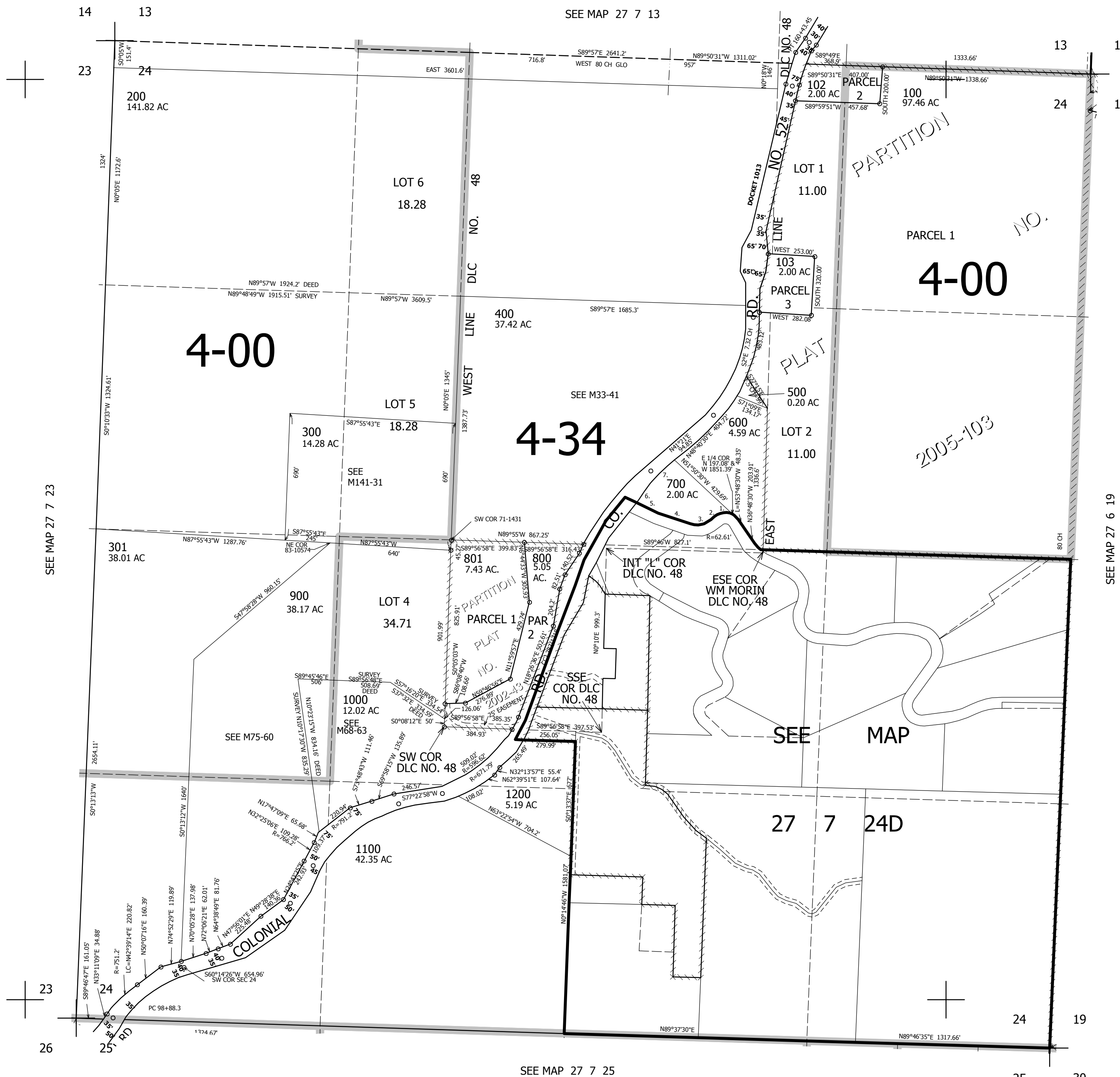
SEC.24 T.27S. R.7W. W.M. DOUGLAS COUNTY

REVISED ON 8-30-07

27 7 24 & INDEX

1" = 400'

CANCELLED NO'S 101 800M1 302



- PARCEL 700
1. LC=579°30'W 80.9'
  2. S49°47'W 27.24'
  3. LC=578°41'W 138.9'
  4. N72°25'W 164.83'
  5. N65°16'30"W 130.5'
  6. N37°51'30"E 80.16'
  7. N38°39'30"E 201.3'

SEE MAP 27 7 23

SEE MAP 27 7 13

SEE M33-41

SEE M141-31

SEE M75-60

SEE M68-63

SEE MAP

SEE MAP 27 6 19

SEE MAP 27 7 25

573,000

4,130,000

27 7 24 & INDEX