

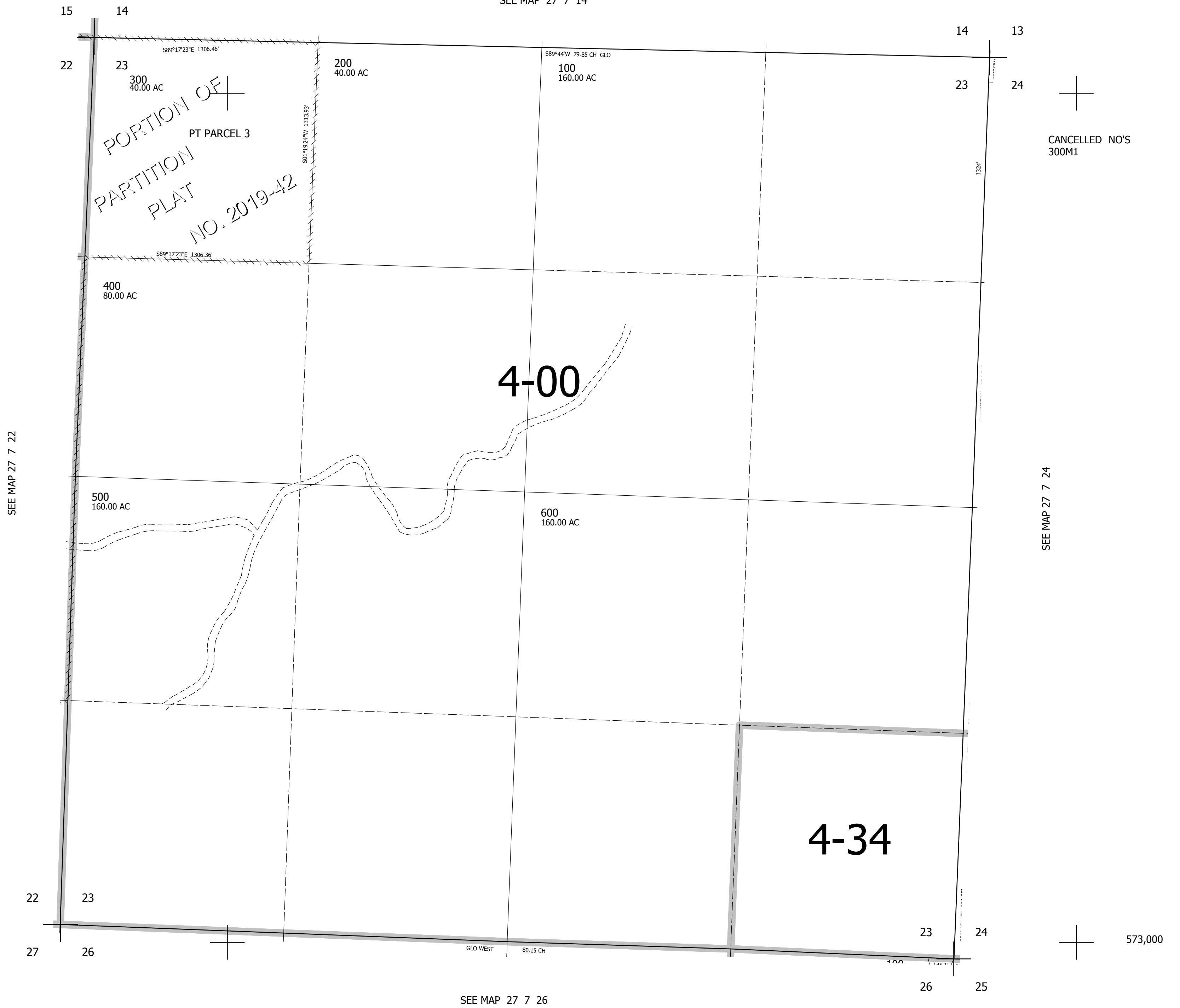
THIS MAP WAS PREPARED FOR ASSESSMENT PURPOSE ONLY.

SEC.23 T.27S. R.7W. W.M.
DOUGLAS COUNTY
1" = 400'

REVISED ON
12-30-19

27 7 23

SEE MAP 27 7 14



SEE MAP 27 7 22

SEE MAP 27 7 24

SEE MAP 27 7 26

4,126,000
27 7 23