

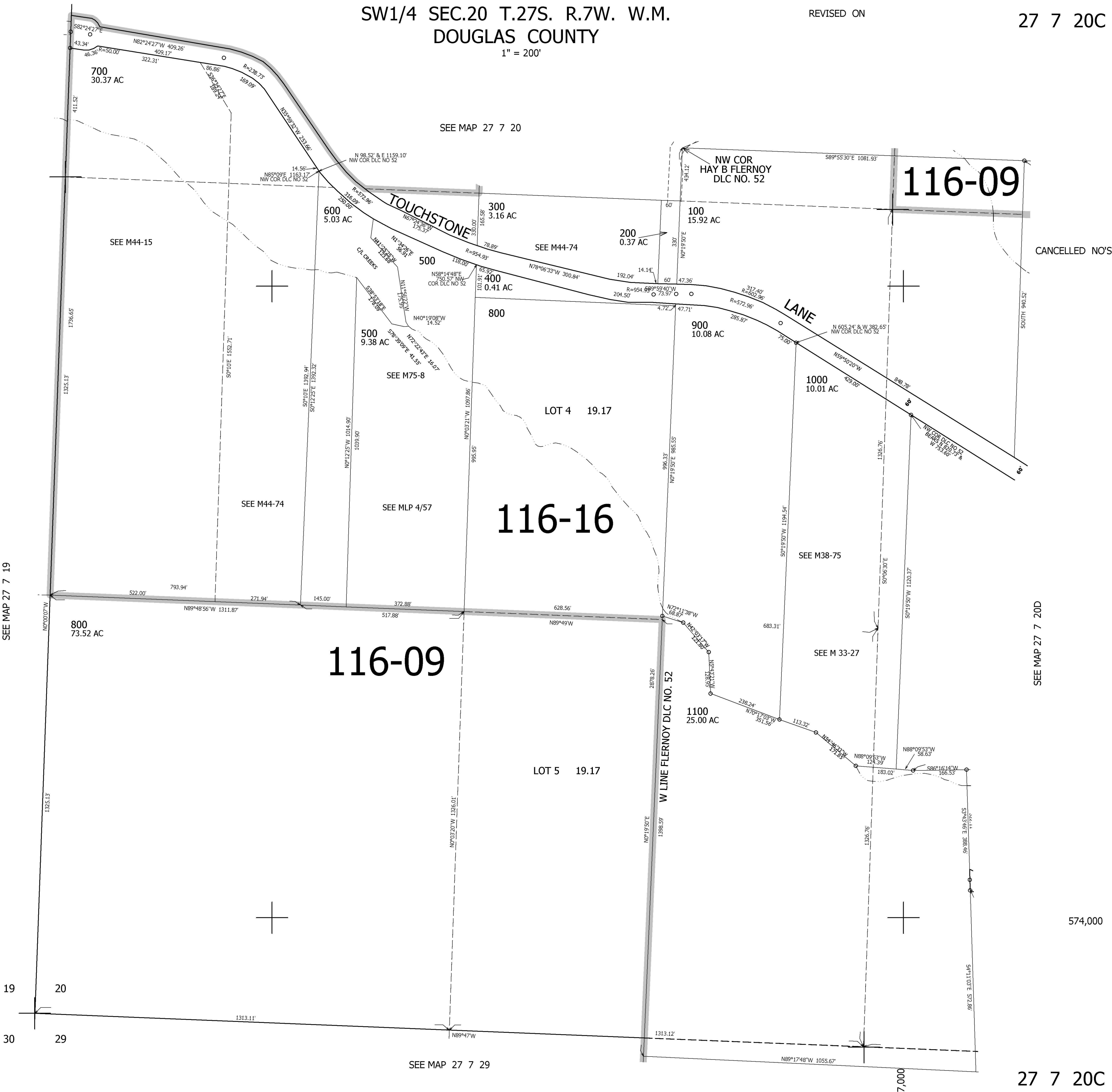
SW1/4 SEC.20 T.27S. R.7W. W.M.
DOUGLAS COUNTY

REVISED ON

27 7 20C

1" = 200'

THIS MAP WAS PREPARED FOR
ASSESSMENT PURPOSE ONLY.



CANCELLED NO'S

SEE MAP 27 7 20D

574,000

27 7 20C

SEE MAP 27 7 29

4,107,000