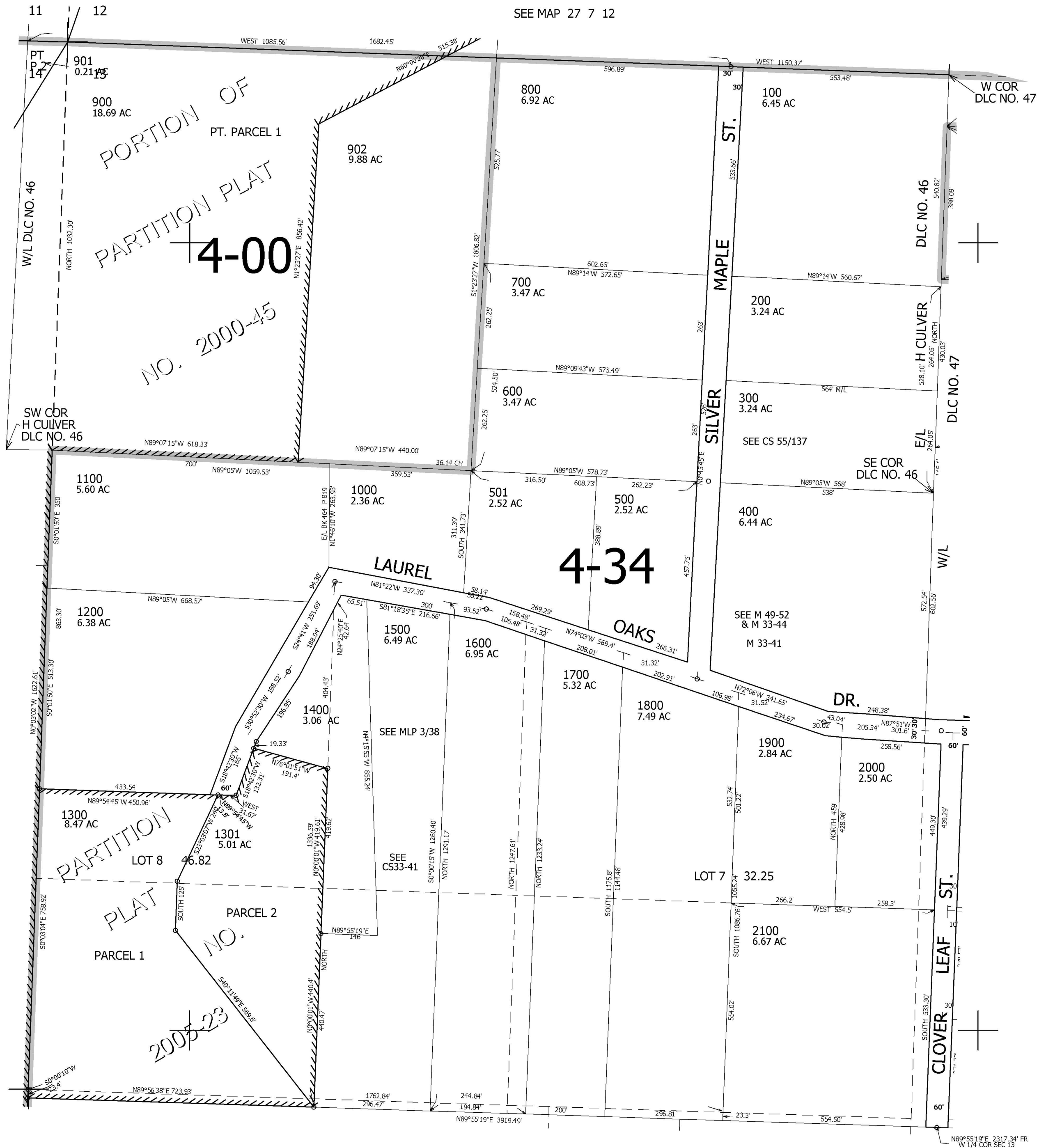


THIS MAP WAS PREPARED FOR ASSESSMENT PURPOSE ONLY.

NW1/4 SEC.13 T.27S. R.7W. W.M.
DOUGLAS COUNTY
1" = 200'

REVISED ON
3-23-05

27 7 13B



SEE MAP 27 7 14

SEE MAP 27 7 13A

SEE MAP 27 7 12

SEE MAP 27 7 13

1/4
COR

CANCELLED NO'S

581,000

CEN
SEC

4,128,000

27 7 13B