

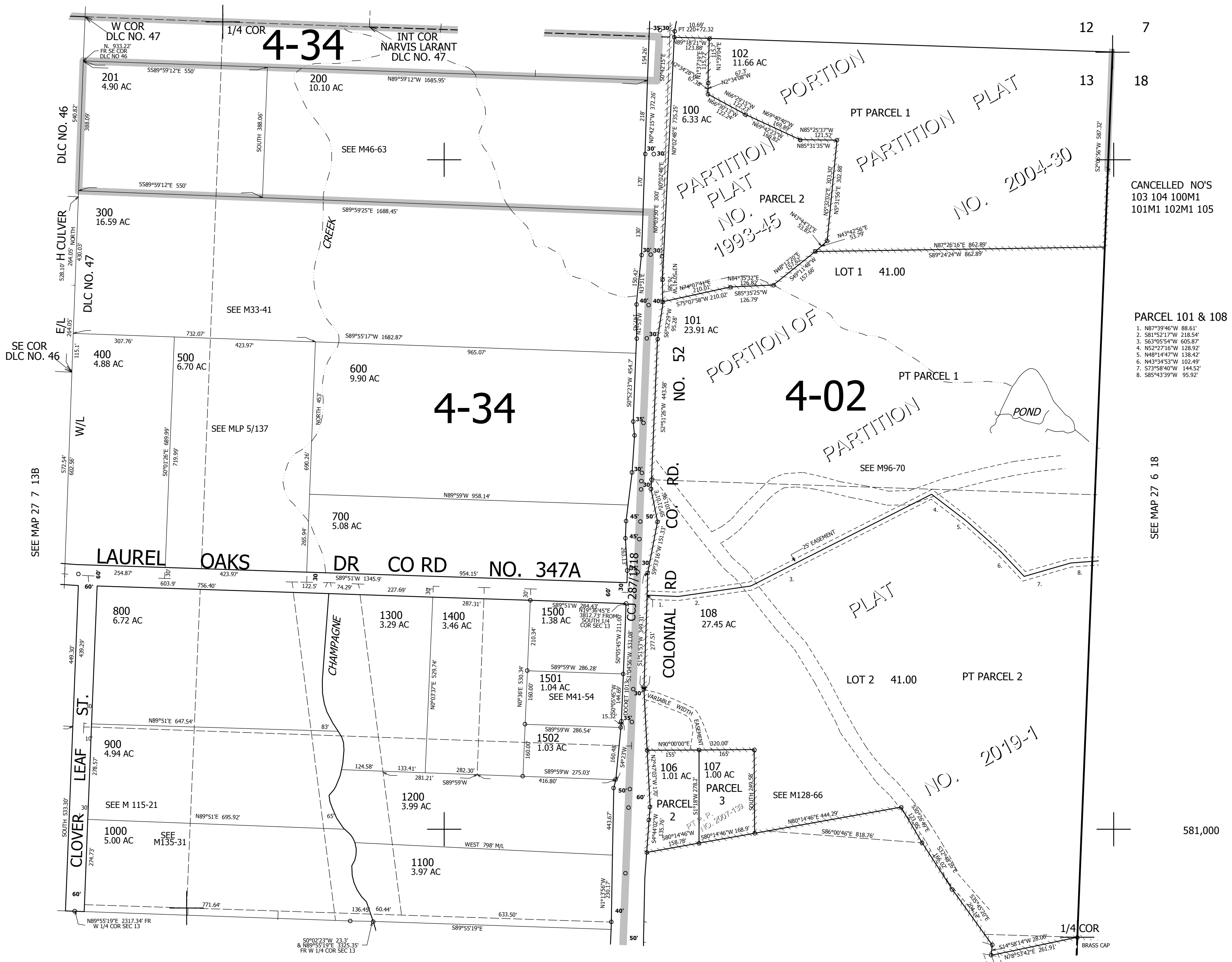
THIS MAP WAS PREPARED FOR ASSESSMENT PURPOSE ONLY.

NE1/4 SEC.13 T.27S. R.7W. W.M. DOUGLAS COUNTY  
1" = 200'

REVISED ON 1-8-19

27 7 13A

SEE MAP 27 7 12D



CANCELLED NO'S  
103 104 100M1  
101M1 102M1 105

PARCEL 101 & 108

1. N87°39'46"W 88.61'
2. S81°52'17"W 218.54'
3. S63°05'54"W 605.87'
4. N52°27'16"W 128.92'
5. N48°14'47"W 138.42'
6. N43°34'53"W 102.49'
7. S73°58'40"W 144.52'
8. S85°43'39"W 95.92'

SEE MAP 27 6 18

581,000

SEE MAP 27 7 13

4,131,000

27 7 13A