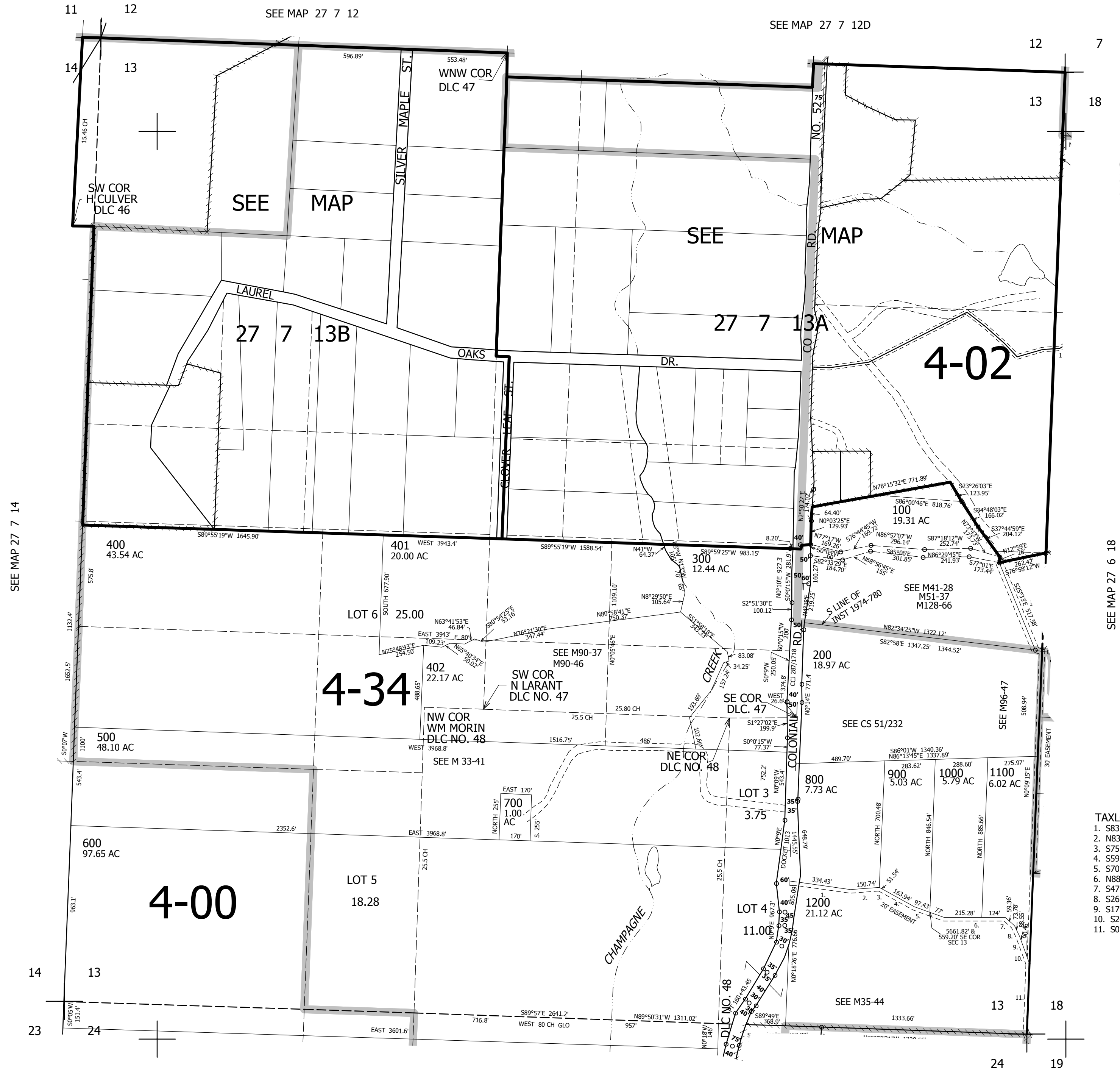


THIS MAP WAS PREPARED FOR ASSESSMENT PURPOSE ONLY.

SEC.13 T.27S. R.7W. W.M.
DOUGLAS COUNTY
1" = 400'

REVISED ON
11-7-07

27 7 13
& INDEX



CANCELLED NO'S
301 100M1 302
200M1 101

SEE MAP 27 6 18

- TAXLOT 1200
1. S83°48'30"E 344.48'
 2. N83°16'50"E 150'
 3. S75°29'40"E 48.98'
 4. S59°38'20"E 163.03'
 5. S70°53'20"E 177.21'
 6. N88°38'50"E 337.08'
 7. S47°44'10"E 53.51'
 8. S26°48'40"E 71.14'
 9. S17°46'50"E 88.75'
 10. S24°05'50"E 88.84'
 11. S0°09'15"W 372.85'

578,000

SEE MAP 27 7 24

4,131,000

27 7 13
& INDEX