

THIS MAP WAS PREPARED FOR ASSESSMENT PURPOSE ONLY.

Upper Left:
123°28'46"W 43°14'11"N
4127517E 586224N ft

SE1/4 SEC.12 T.27S. R.07W. W.M.
DOUGLAS COUNTY
1" = 200'

Date Exported 2025-10-28

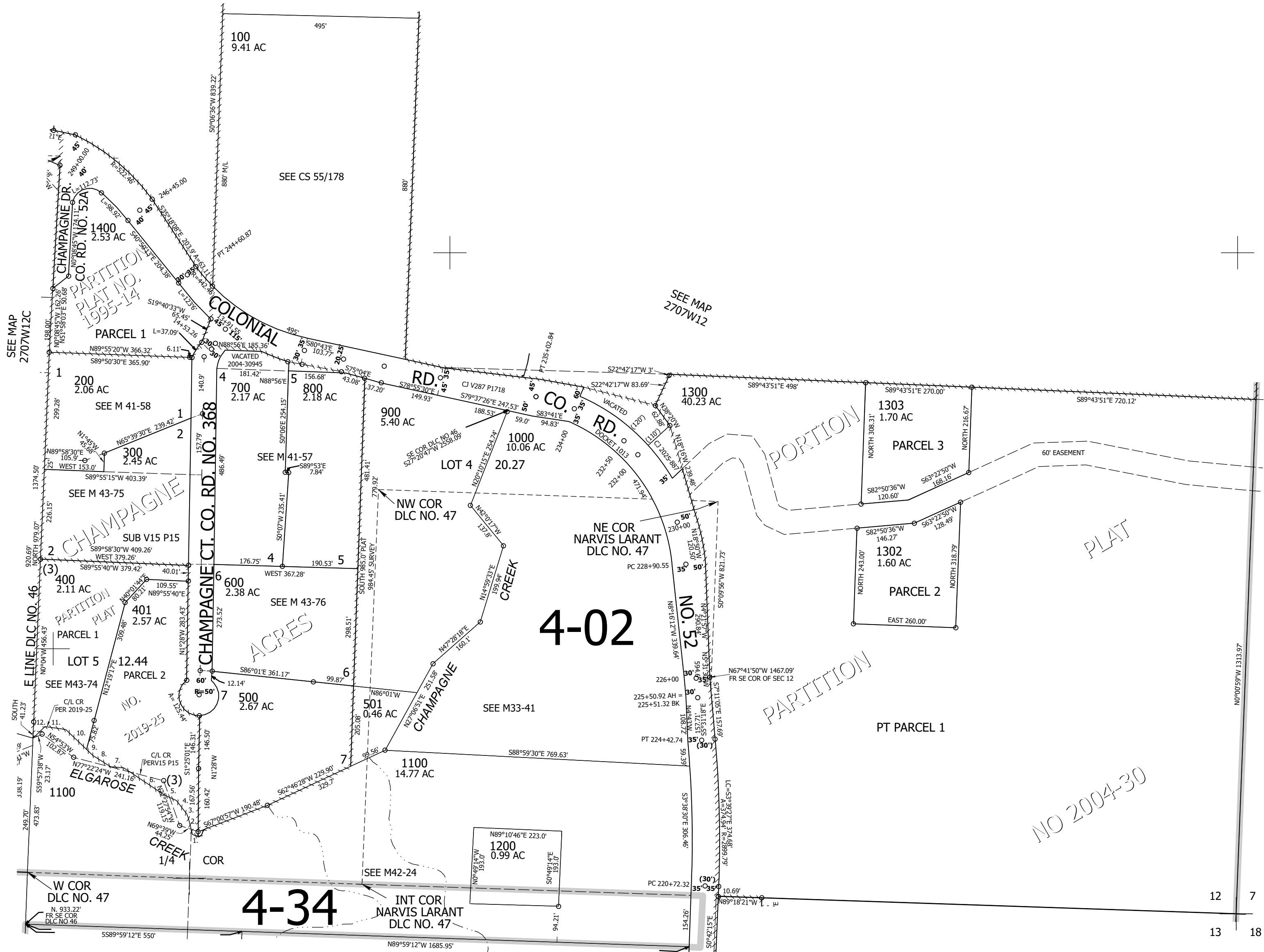
270712D

- PP 2019-25
- 1. N69°36'01"W 12.25'
- 2. N16°53'25"W 43.97'
- 3. N22°31'11"W 9.76'
- 4. N39°49'20"W 43.26'
- 5. N68°20'42"W 33.6'
- 6. N58°47'19"W 124.14'
- 7. N86°48'41"W 33.58'
- 8. N60°23'59"W 52.93'
- 9. N48°36'56"W 22.87'
- 10. N48°36'56"W 72.93'
- 11. N84°18'17"W 52.74'
- 12. S42°13'44"W 43.74'

CEN SEC

1/4 COR

CANCELLED NOS:
1301 1300M1



SEE MAP
2706W07

SEE MAP
2707W13A

270712D

Lower Right:
123°27'51"W 43°13'37"N
4131443E 582624N ft