

THIS MAP WAS PREPARED FOR ASSESSMENT PURPOSE ONLY.

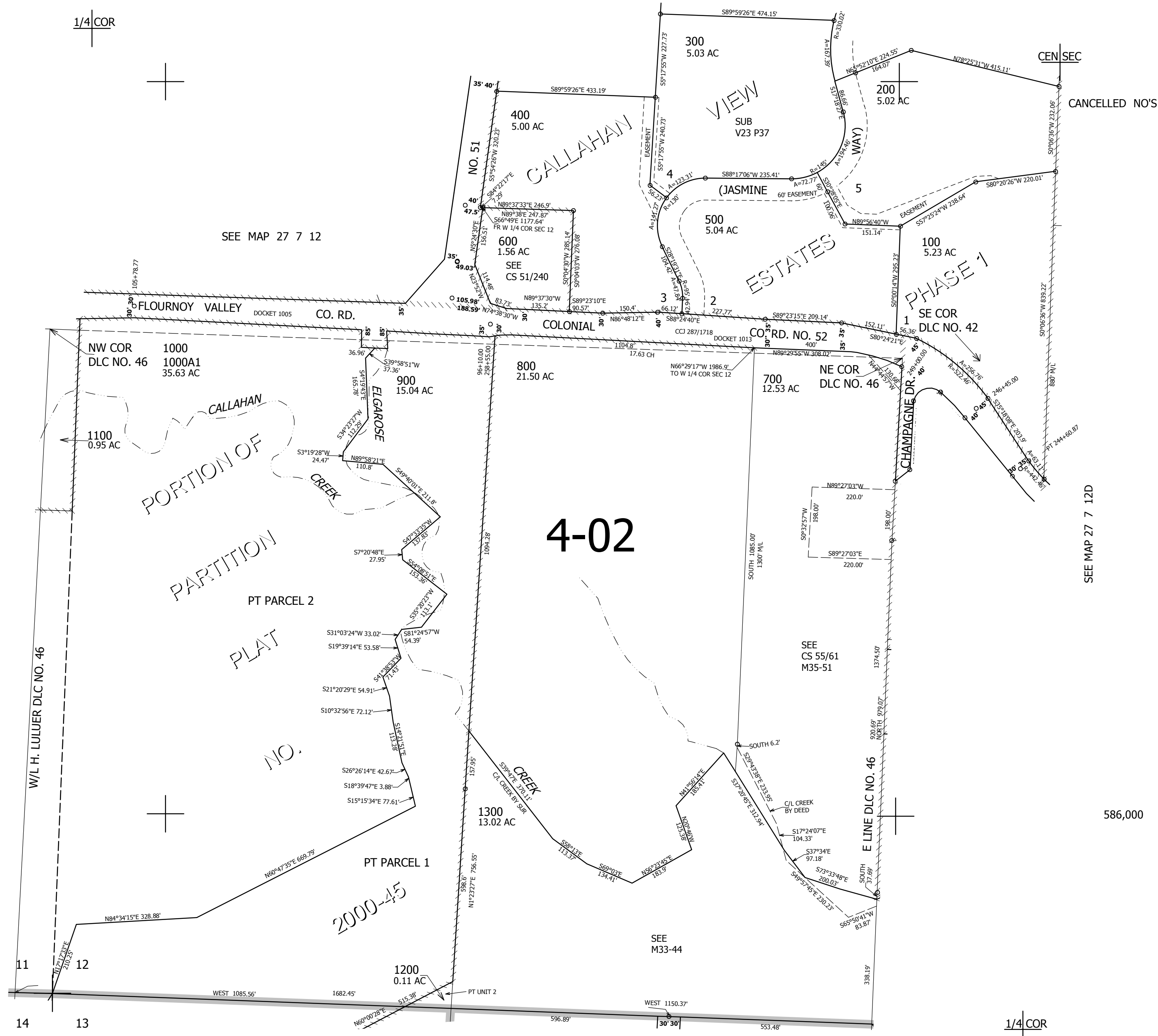
SW1/4 SEC.12 T.27S. R.7W. W.M.  
DOUGLAS COUNTY  
1" = 200'

REVISED ON

27 7 12C

SEE MAP 27 7 12B

1/4 COR



CANCELLED NO'S

SEE MAP 27 7 12

FLOURNOY VALLEY CO. RD.

COLONIAL CO. RD.

CO. RD. NO. 52

SE COR DLC NO. 42

NW COR 1000 DLC NO. 46 1000A1 35.63 AC

900 15.04 AC

800 21.50 AC

700 12.53 AC

NE COR DLC NO. 46

100 5.23 AC

1100 0.95 AC

4-02

PT PARCEL 2

PLAT

NO.

PT PARCEL 1

2000-45

1300 13.02 AC

SEE M33-44

1200 0.11 AC

E LINE DLC NO. 46

SEE MAP 27 7 12D

586,000

SEE MAP 27 7 11

W/L H. LULLER DLC NO. 46

11

12

14

13

SEE MAP 27 7 13B

1/4 COR

4,128,000

27 7 12C