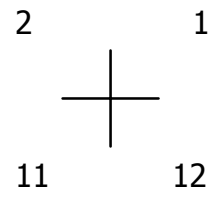


THIS MAP WAS PREPARED FOR ASSESSMENT PURPOSE ONLY.

NW1/4 SEC.12 T.27S. R.7W. W.M.
DOUGLAS COUNTY
1" = 200'

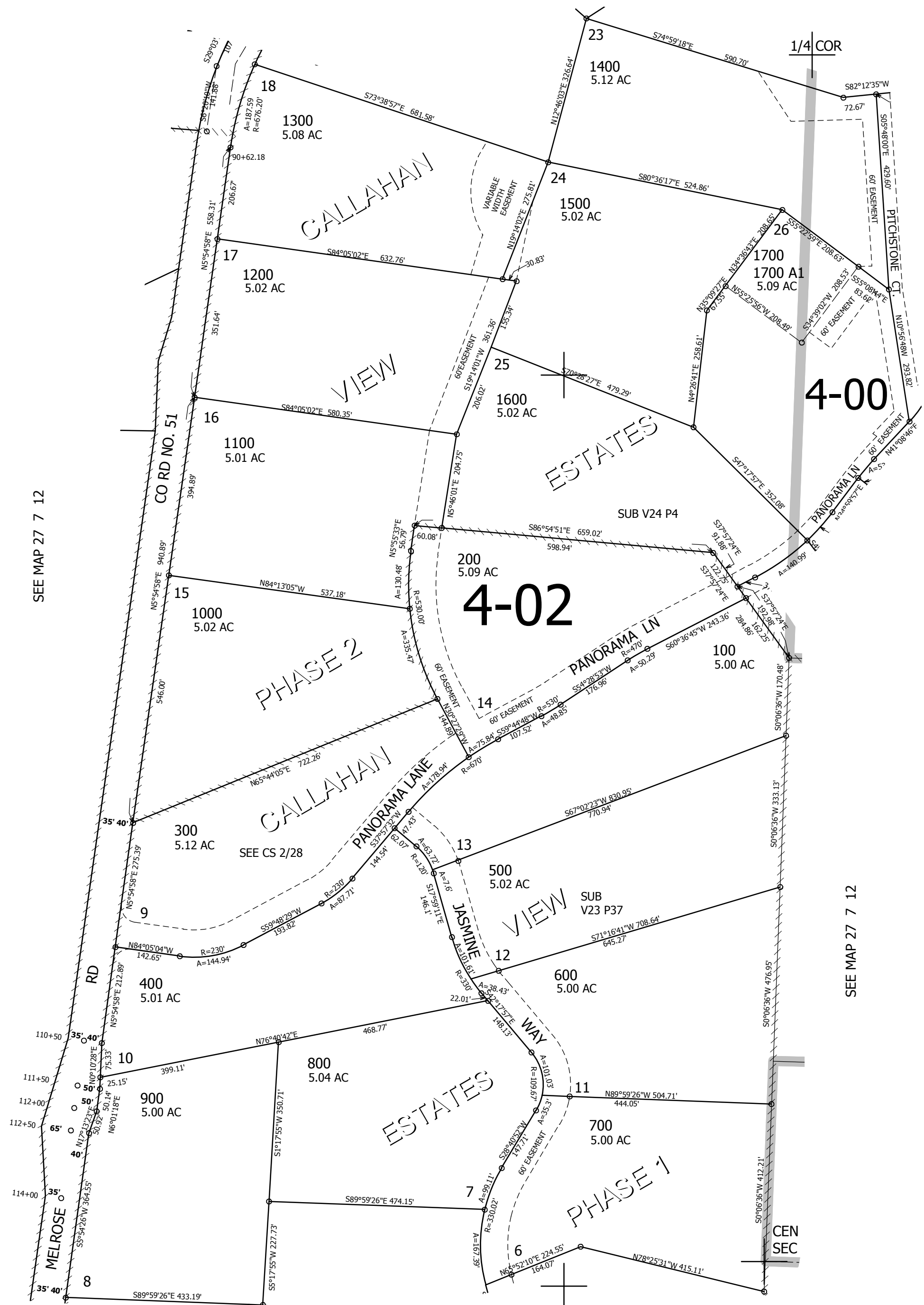
REVISED ON
2-8-19

27 7 12B



SEE MAP 27 7 1C

CANCELLED NO'S



SEE MAP 27 7 12

SEE MAP 27 7 12A

SEE MAP 27 7 12

SEE MAP 27 7 12C

1/4 COR

586,000

27 7 12B