

THIS MAP WAS PREPARED FOR ASSESSMENT PURPOSE ONLY.

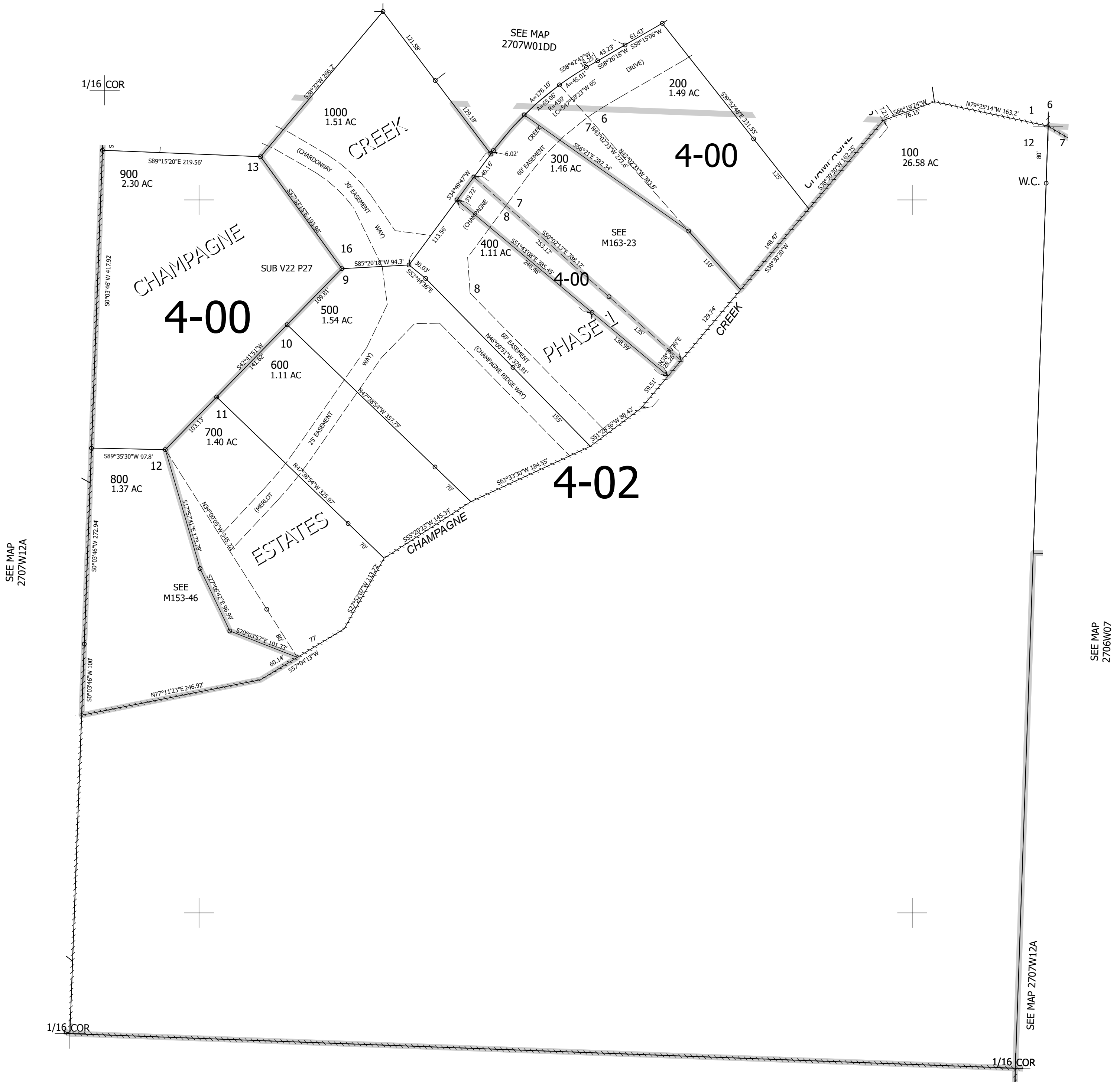
Upper Left:
123°28'20"W 43°14'38"N
4129530E 588888N ft

NE1/4 NE1/4 SEC.12 T.27S. R.07W. W.M.
DOUGLAS COUNTY
1" = 100'

Date Exported 2026-03-10

270712AA

CANCELLED NOS:
801 301 401



SEE MAP
2707W12

270712AA

Lower Right:
123°27'52"W 43°14'22"N
4131502E 587149N ft