

THIS MAP WAS PREPARED FOR ASSESSMENT PURPOSE ONLY.

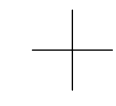
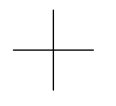
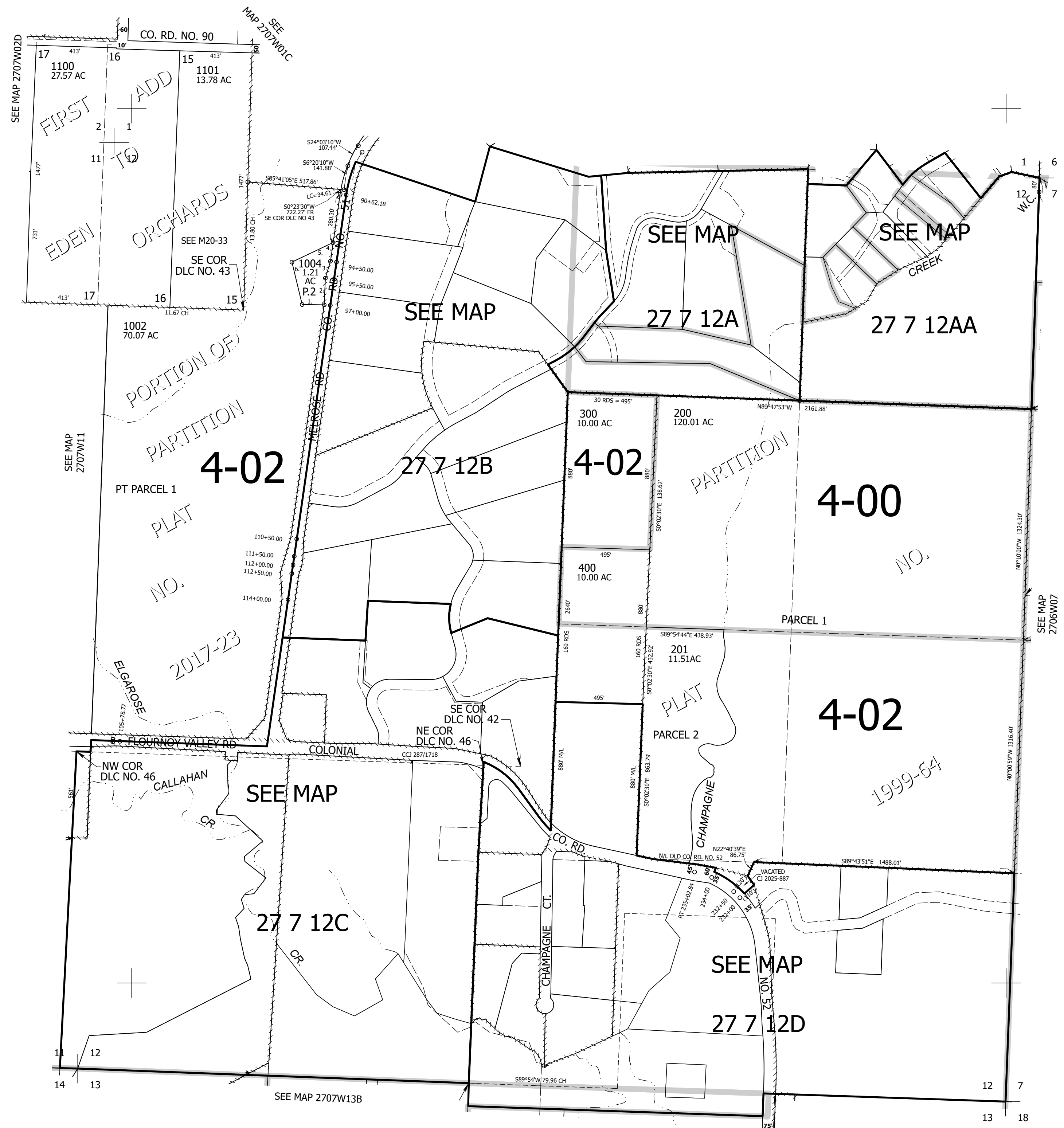
Upper Left:
123°29'30"W 43°14'46"N
4124388E 589818N ft

SEC.12 T.27S. R.07W. W.M.
DOUGLAS COUNTY
1" = 400'

Date Exported 2025-10-28

PP 2017-23
PARCEL 2
1. S89°07'55"E 126.81'
2. N2°16'51"E 150.75'
3. N16°31'20"E 101.12'
4. N7°59'29"E 107.52'
5. S64°35'32"W 260.53'
6. S13°34'14"E 249.46'

CANCELLED NOS:
1001 1003
100 THRU 106
500 THRU 900
1000 1000A1 1005



Lower Right:
123°27'40"W 43°13'40"N
4132237E 582863N ft