

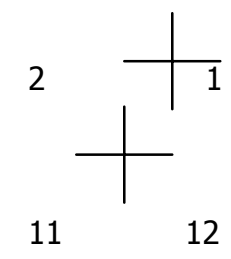
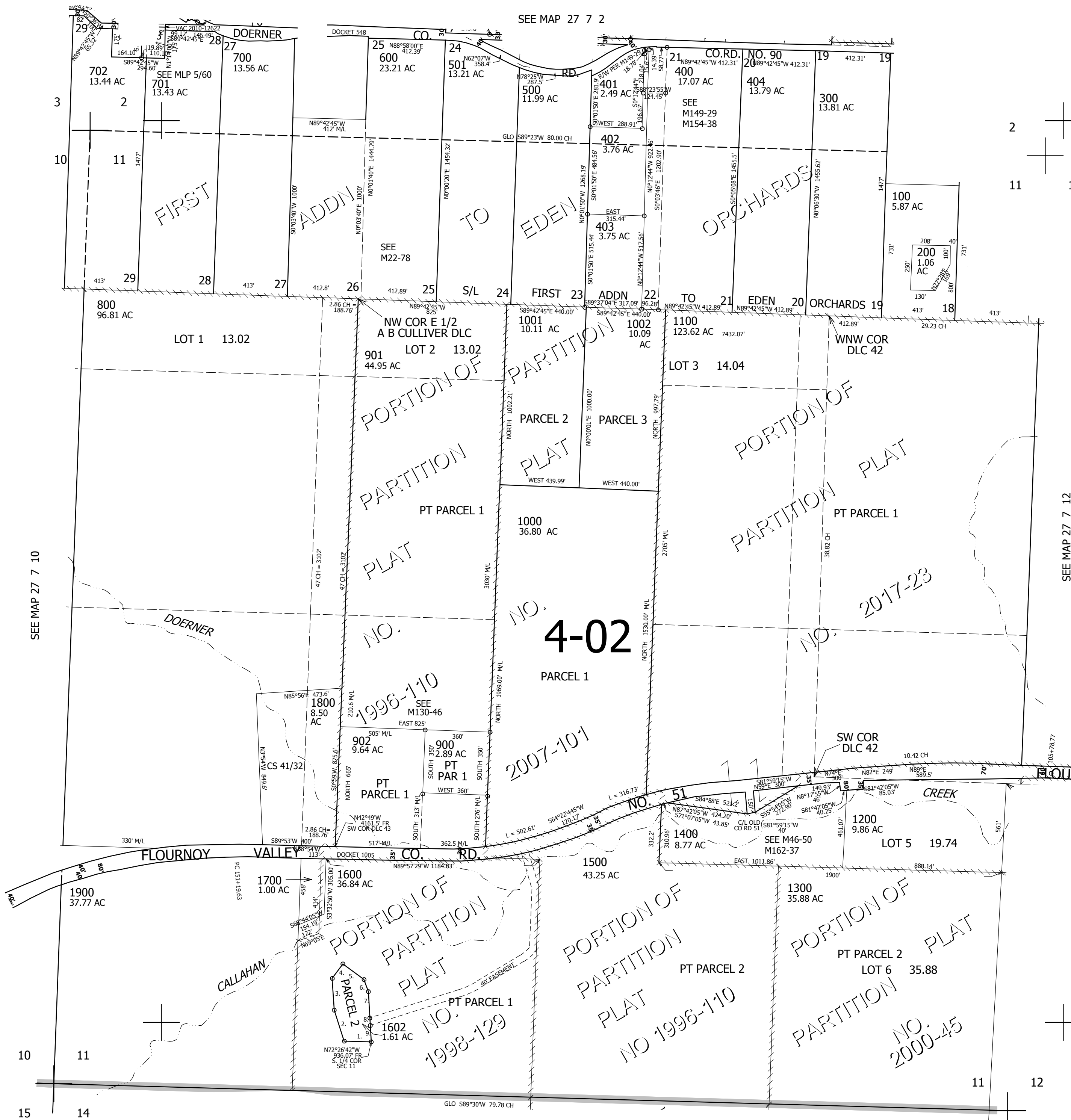
THIS MAP WAS PREPARED FOR ASSESSMENT PURPOSE ONLY.

SEC.11 T.27S. R.7W. W.M. DOUGLAS COUNTY

REVISED ON 11-7-17

27 7 11

1" = 400'



CANCELLED NO'S 903 1200M1 1400M1 405 406

- PARCEL 401  
CLOCKWISE FROM NW COR
1. N67°07'04"E 9.64'
  2. N62°48'53"E 20.74'
  3. N60°10'13"E 15.97'
  4. N55°59'13"E 39.47'
  5. N51°42'49"E 26.65'
  6. N50°10'40"E 79.06'
  7. N5°41'53"E 36.21'
  8. N62°49'05"E 33.04'
  9. N68°51'47"E 28.17'
  10. N75°06'29"E 30.28'
  11. N80°42'43"E 17.61'

- PARCEL 1602
1. N89°49'42"W 150'
  2. N19°26'21"W 180'
  3. N5°17'32"W 176.31'
  4. N34°51'20"E 100'
  5. S55°08'39"E 144.6'
  6. S21°39'44"E 72.18'
  7. S4°52'28"E 145.92'
  8. S4°52'28"E 41.4'
  9. S4°52'28"E 91.78'

SEE MAP 27 7 12

SEE MAP 27 7 10

SEE MAP 27 7 14

4,126,000

27 7 11

584,000