

THIS MAP WAS PREPARED FOR ASSESSMENT PURPOSE ONLY.

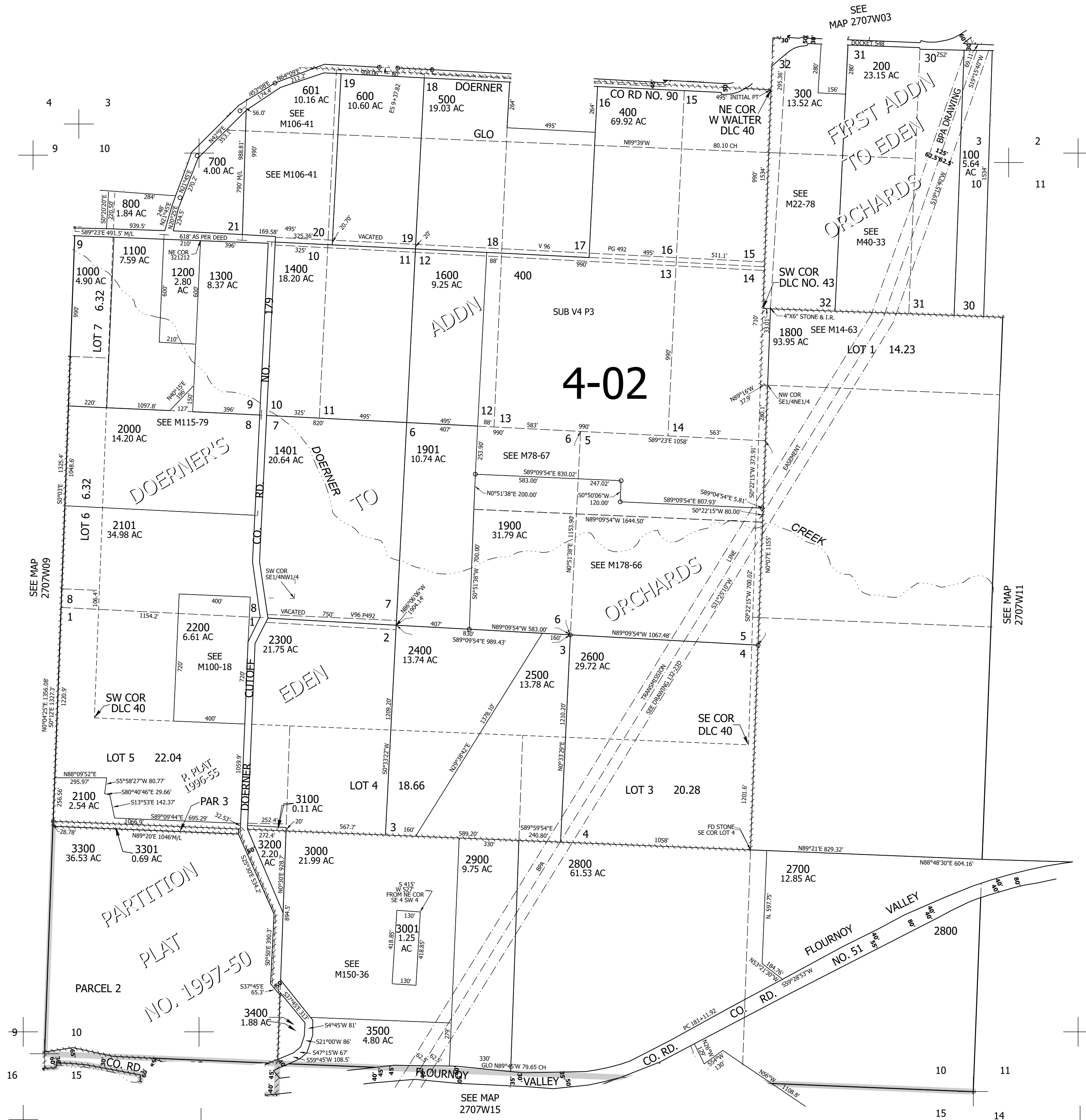
Upper Left:  
123°31'49"W 43°14'45"N  
4114102E 590120N ft

SEC.10 T.27S. R.07W. W.M.  
DOUGLAS COUNTY  
1" = 400'

Date Expored 2023-08-29

270710

CANCELLED NOS:  
3600 2801 1500  
1700 900 401



SEE MAP 2707W15

14

270710

Lower Right:  
123°29'59"W 43°13'39"N  
4121952E 583165N ft