

THIS MAP WAS PREPARED FOR ASSESSMENT PURPOSE ONLY.

Upper Left:
123°31'51"W 43°15'35"N
4114128E 595182N ft

SEC.03 T.27S. R.07W. W.M.
DOUGLAS COUNTY
1" = 400'

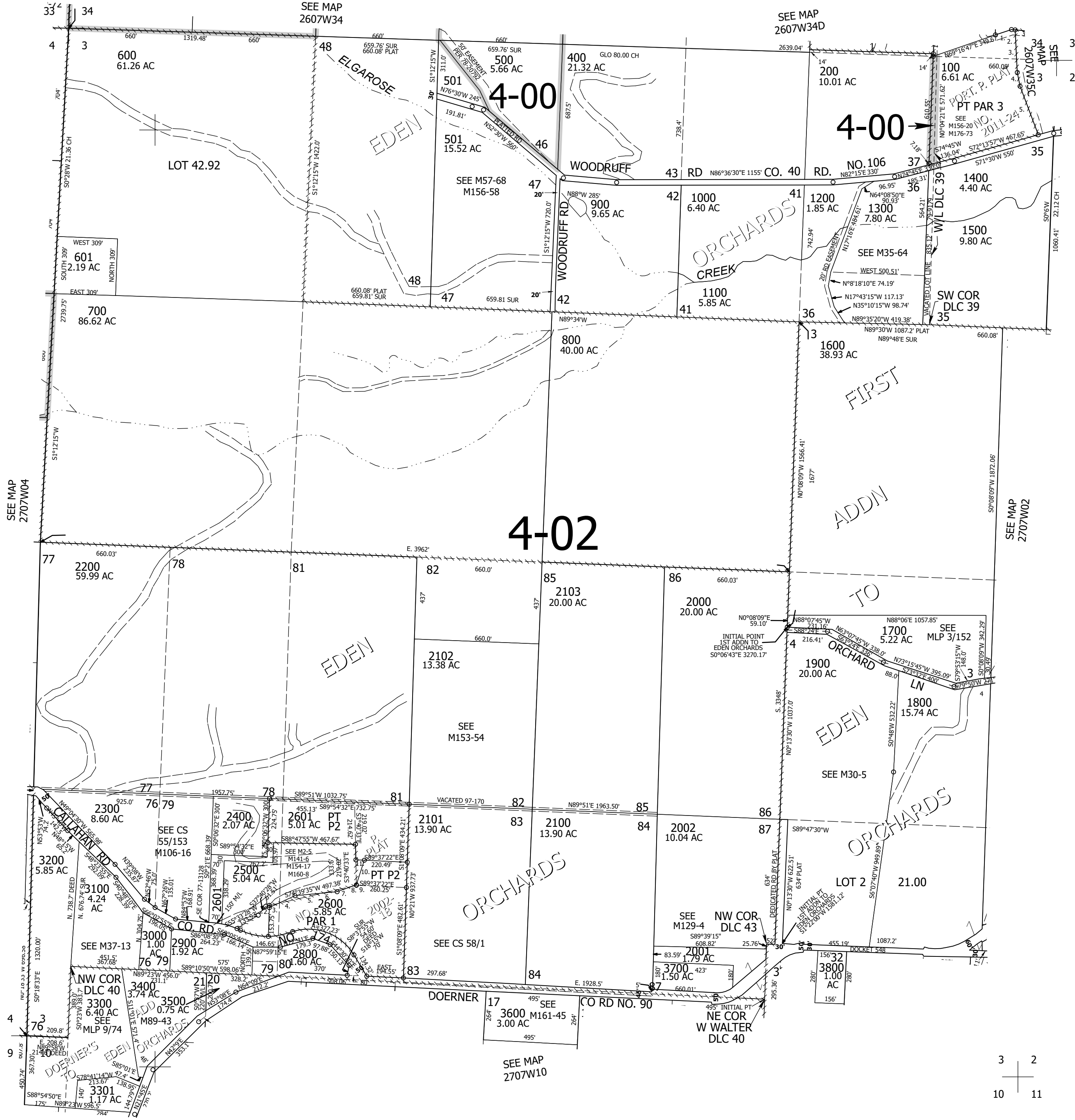
Date Exported 2026-03-30

270703

- P.P. 2011-24
1. N69°35'45"E 90.32'
 2. S86°58'13"E 20'
 3. S4°59'49"E 227.37'
 4. S13°32'27"E 75'
 5. S22°43'35"E 276.51'

- TAXLOT 2500 & 2600
1. N74°39'35"E 20.84'
 2. S0°06'55"E 11'
 3. N62°57'52"E 52.36'
 4. N62°57'52"E 98.66'
 5. N82°21'08"E 149.61'
 6. N82°21'08"E 76.11'
 7. N68°14'59"E 91.25'
 8. N68°14'59"E 17.91'
 9. N3°26'05"W 2.04'
 10. N15°37'02"E 138.16'
 11. N89°37'22"W 45.2'

- CANCELLED NOS:
- 500M1 501M1 600M1
 - 1500M1 1600M1 1700M1
 - 2104 2700 602
 - 2602 2603 2604
 - 2501 300 2502
 - 2605 101 102
 - 2201 2202



3 2
10 11

270703

Lower Right:
123°30'2"W 43°14'29"N
4121977E 588227N ft