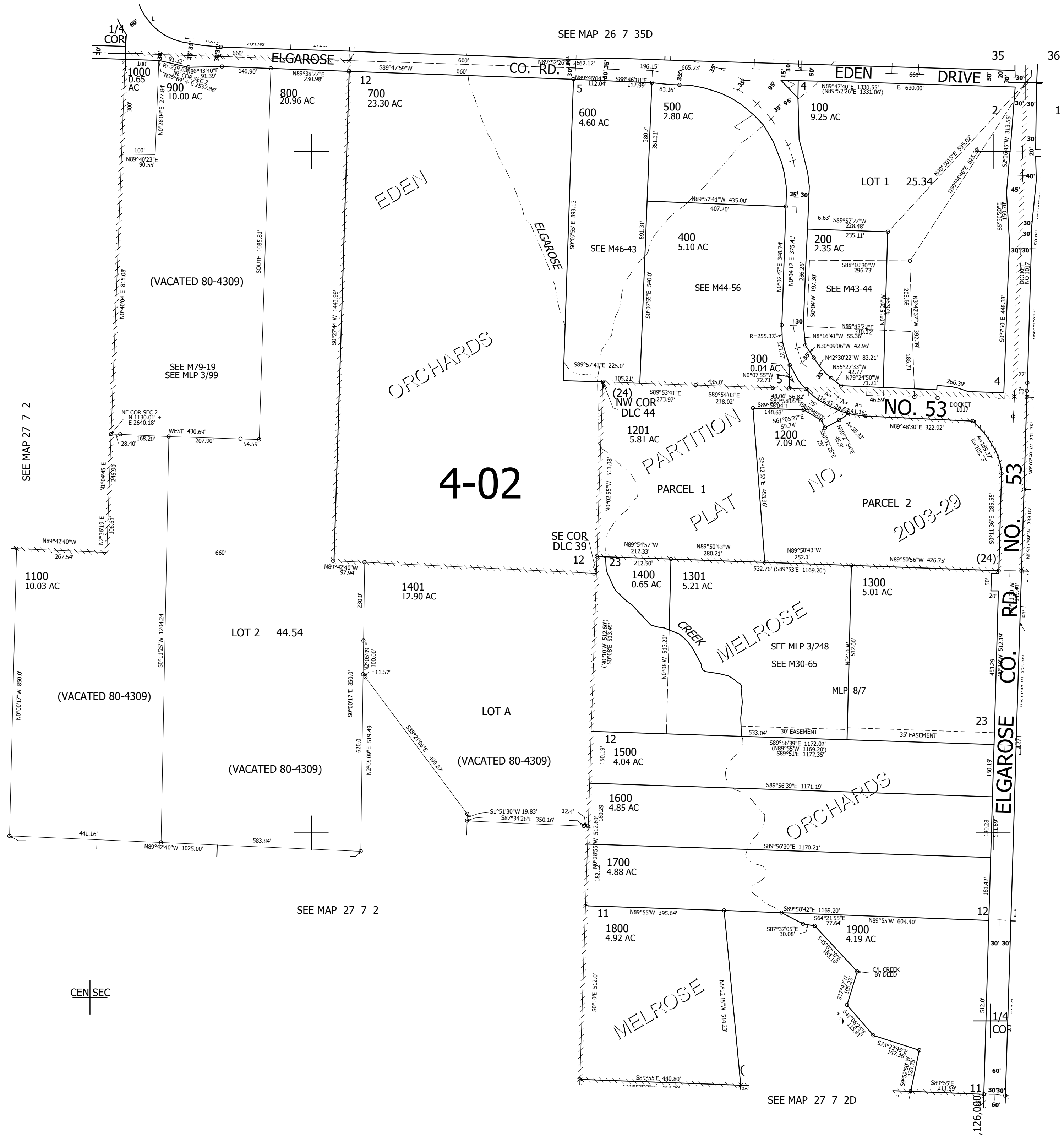


THIS MAP WAS PREPARED FOR ASSESSMENT PURPOSE ONLY.

NE1/4 SEC.2 T.27S. R.7W. W.M. DOUGLAS COUNTY 1" = 200'

REVISED ON 4-20-12

27 7 2A



CANCELLED NO'S 400M1 500M1 600M1 1302

SEE MAP 27 7 1B

592,000

27 7 2A