

THIS MAP WAS PREPARED FOR ASSESSMENT PURPOSE ONLY.

Upper Left:
123°28'20"W 43°14'50"N
4129553E 590087N ft

SE1/4 SE1/4 SEC.01 T.27S. R.07W. W.M.
DOUGLAS COUNTY
1" = 100'

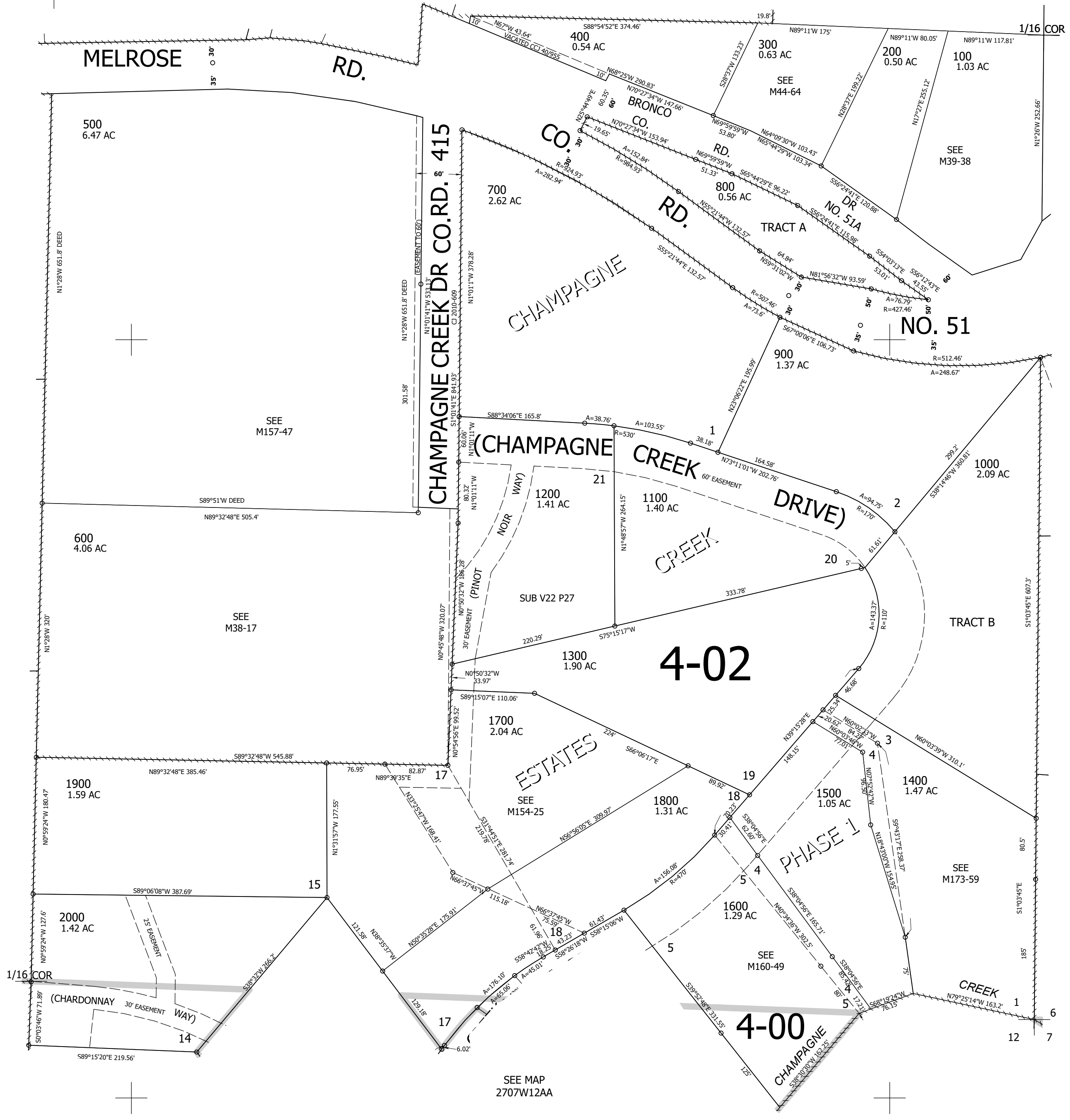
Date Exported 2025-06-05

270701DD

CANCELLED NOS:
1701 1801 1501
1502 1702 1802

SEE MAP
2707W01D

1/16 COR



SEE MAP
2706W06C

SEE MAP
2707W12AA

270701DD

Lower Right:
123°27'53"W 43°14'34"N
4131528E 588349N ft