

THIS MAP WAS PREPARED FOR ASSESSMENT PURPOSE ONLY.

Upper Left:
123°29'17"W 43°15'5"N
4125418E 591692N ft

SW1/4 SEC.01 T.27S. R.07W. W.M.
DOUGLAS COUNTY
1" = 200'

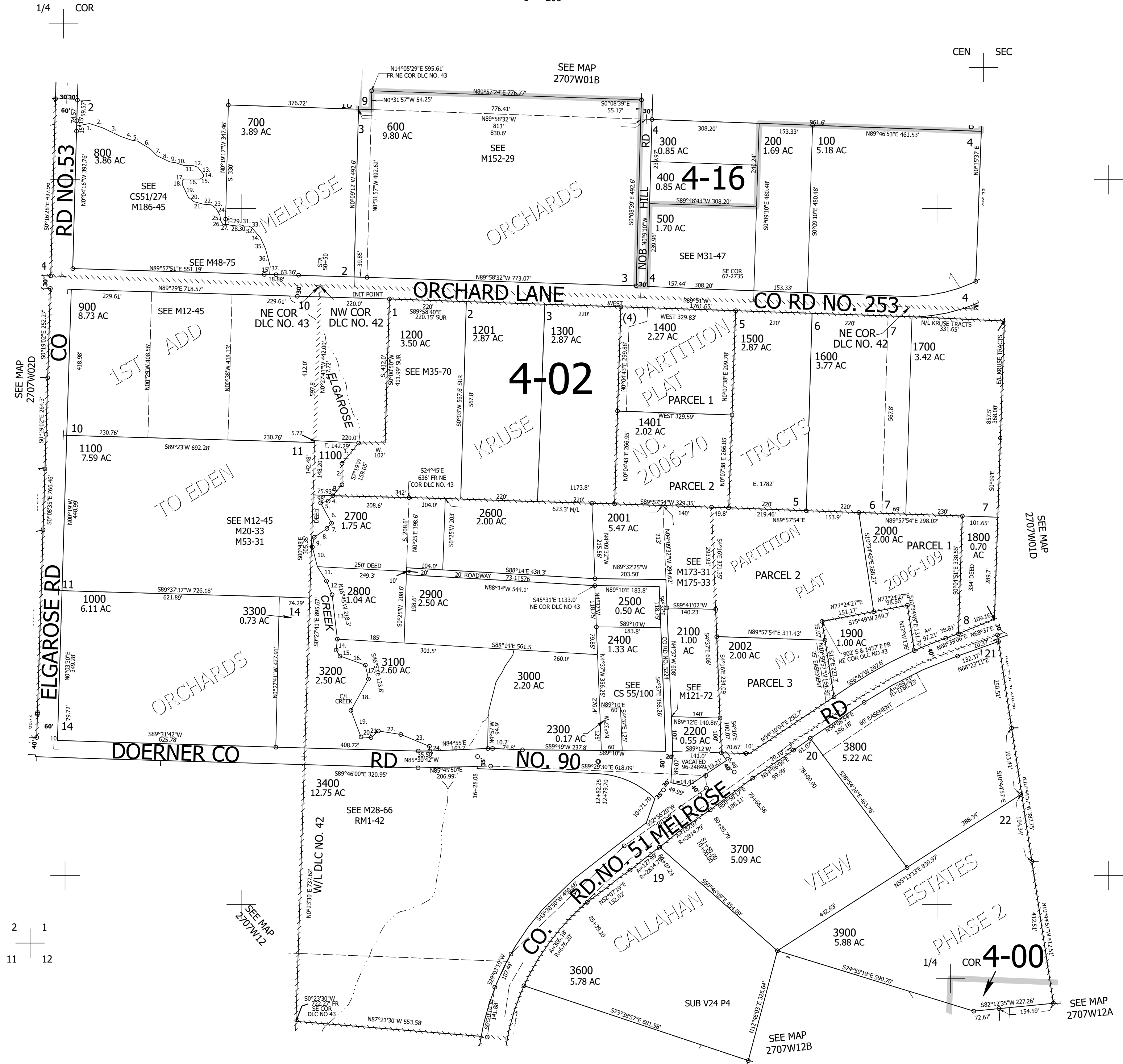
Date Exported 2026-03-12

270701C

CANCELLED NOS:

- C/L ELGAROSE CREEK
1. S36°55'45"W 78.78'
 2. S3°52'E 55.2'
 3. S35°34'W 37.07'
 4. S35°34'W 31.03'
 5. S75°31'W 17.8'
 6. S30°34'E 61.1'
 7. S38°58'W 21.9'
 8. S49°01'W 45.5'
 9. S13°53'W 26.6'
 10. S20°14'E 56.9'
 11. S31°51'E 52.7'
 12. S19°06'E 40.6'
 13. S10°43'E 125.6'
 14. S9°12'W 35.8'
 15. S34°15'E 19'
 16. S72°08'E 81.8'
 17. S12°58'E 38'
 18. S26°35'W 106.1'
 19. S22°31'E 81'
 20. S89°53'E 28.4'
 21. N48°33'E 28.5'
 22. S85°33'E 63.3'
 23. S68°46'E 90.4'
 24. S12°06'15"E 11.18'

- PARCEL 800
1. N77°31'21"E 37.48'
 2. S73°55'56"E 38.25'
 3. S66°09'34"E 59.36'
 4. S72°56'17"E 33.12'
 5. S83°04'43"E 17.02'
 6. S59°57'33"E 42.11'
 7. S46°38'15"E 28.43'
 8. S66°10'11"E 41.35'
 9. S83°39'27"E 16.88'
 10. S72°44'18"E 25.30'
 11. N88°40'38"E 26.47'
 12. S72°18'19"E 13.71'
 13. S39°26'21"E 25.18'
 14. S13°57'03"E 7.01'
 15. S54°39'12"W 13.21'
 16. S88°36'35"W 44.80'
 17. S45°58'51"W 8.18'
 18. S2°31'01"E 10.48'
 19. S27°04'55"E 40.15'
 20. S54°03'08"E 21.09'
 21. S76°30'03"E 28.30'
 22. S87°38'35"E 21.76'
 23. S54°56'55"E 17.07'
 24. S32°15'02"E 22.63'
 25. S85°58'12"E 16.22'
 26. S32°08'09"E 12.12'
 27. N89°49'03"E 7.82'
 28. N89°49'03"E 6.93'
 29. S75°06'47"E 11.70'
 30. N82°07'52"E 23.94'
 31. S75°01'37"E 12.61'
 32. N87°04'37"E 13.10'
 33. S60°36'00"E 9.83'
 34. S42°19'19"E 37.81'
 35. S26°30'56"E 35.25'
 36. S16°22'53"E 52.48'
 37. S2°29'30"W 20.01'



2 1
11 12