

THIS MAP WAS PREPARED FOR ASSESSMENT PURPOSE ONLY.

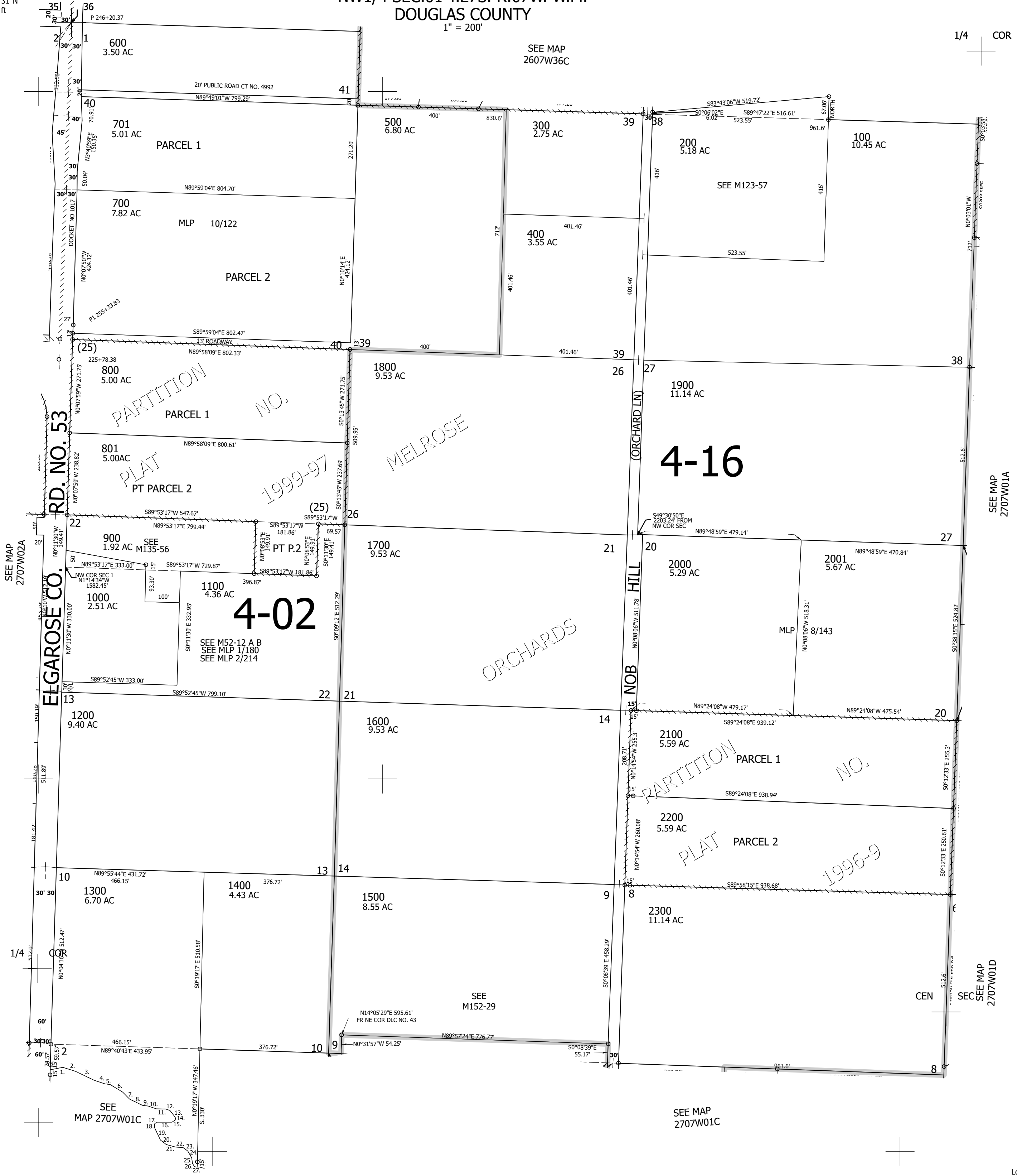
Upper Left:
123°29'20"W 43°15'31"N
4125276E 594355N ft

NW1/4 SEC.01 T.27S. R.07W. W.M.
DOUGLAS COUNTY
1" = 200'

Date Exported 2026-03-12

270701B

- PARCEL 1300
1. N77°31'21"E 37.48'
 2. S73°55'56"E 38.25'
 3. S66°09'34"E 59.36'
 4. S72°56'17"E 33.12'
 5. S83°04'43"E 17.02'
 6. S59°57'33"E 42.11'
 7. S46°38'15"E 28.43'
 8. S66°10'11"E 41.35'
 9. S83°39'27"E 16.88'
 10. S72°44'18"E 25.30'
 11. N88°40'38"E 26.47'
 12. S72°18'19"E 13.71'
 13. S39°26'21"E 25.18'
 14. S13°57'03"E 7.01'
 15. S54°39'12"W 13.21'
 16. S88°36'35"W 44.80'
 17. S45°58'51"W 8.18'
 18. S2°31'01"E 10.48'
 19. S2°04'55"E 40.15'
 20. S54°03'08"E 21.09'
 21. S76°30'03"E 28.30'
 22. S87°38'35"E 21.76'
 23. S84°56'55"E 17.07'
 24. S32°15'02"E 22.63'
 25. S8°58'12"E 16.22'
 26. S32°08'09"E 12.12'
 27. N89°49'03"E 7.82'



1/4 COR

CANCELLED NOS:
901 2201 1001
902 1501

4-16

4-02

270701B

Lower Right:
123°28'25"W 43°14'57"N
4129203E 590755N ft