

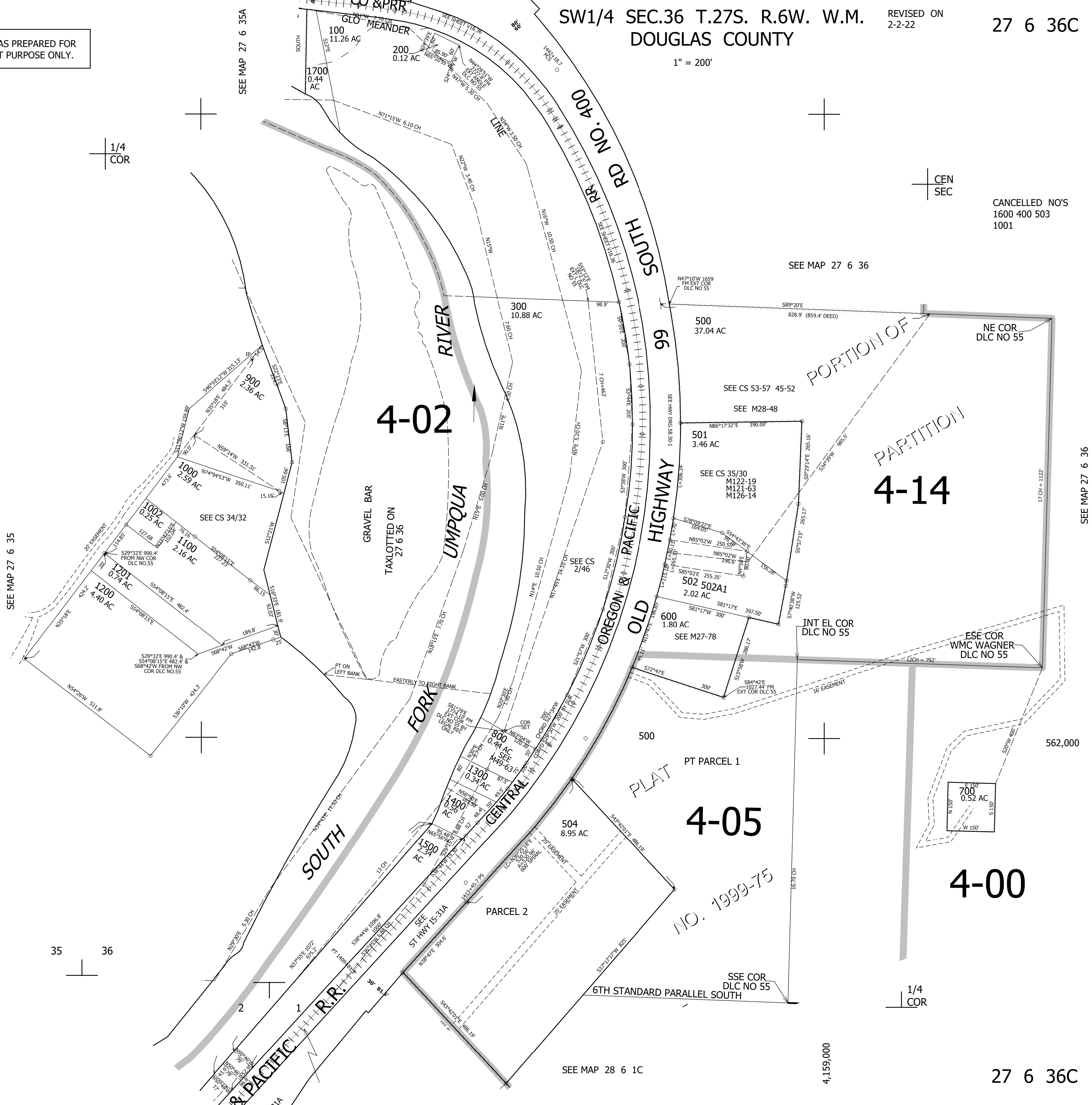
THIS MAP WAS PREPARED FOR ASSESSMENT PURPOSE ONLY.

SW1/4 SEC.36 T.27S. R.6W. W.M. DOUGLAS COUNTY

REVISED ON 2-2-22

27 6 36C

1" = 200'



CANCELLED NO'S  
1600 400 503  
1001

SEE MAP 27 6 36

SEE MAP 27 6 35

SEE MAP 27 6 36

SEE MAP 28 6 1C

4,159,000

27 6 36C