

NW1/4 SEC.36 T.27S. R.6W. W.M.
DOUGLAS COUNTY

REVISED ON
2-2-22

27 6 36B

1" = 200'

THIS MAP WAS PREPARED FOR
ASSESSMENT PURPOSE ONLY.

26 25
35 36

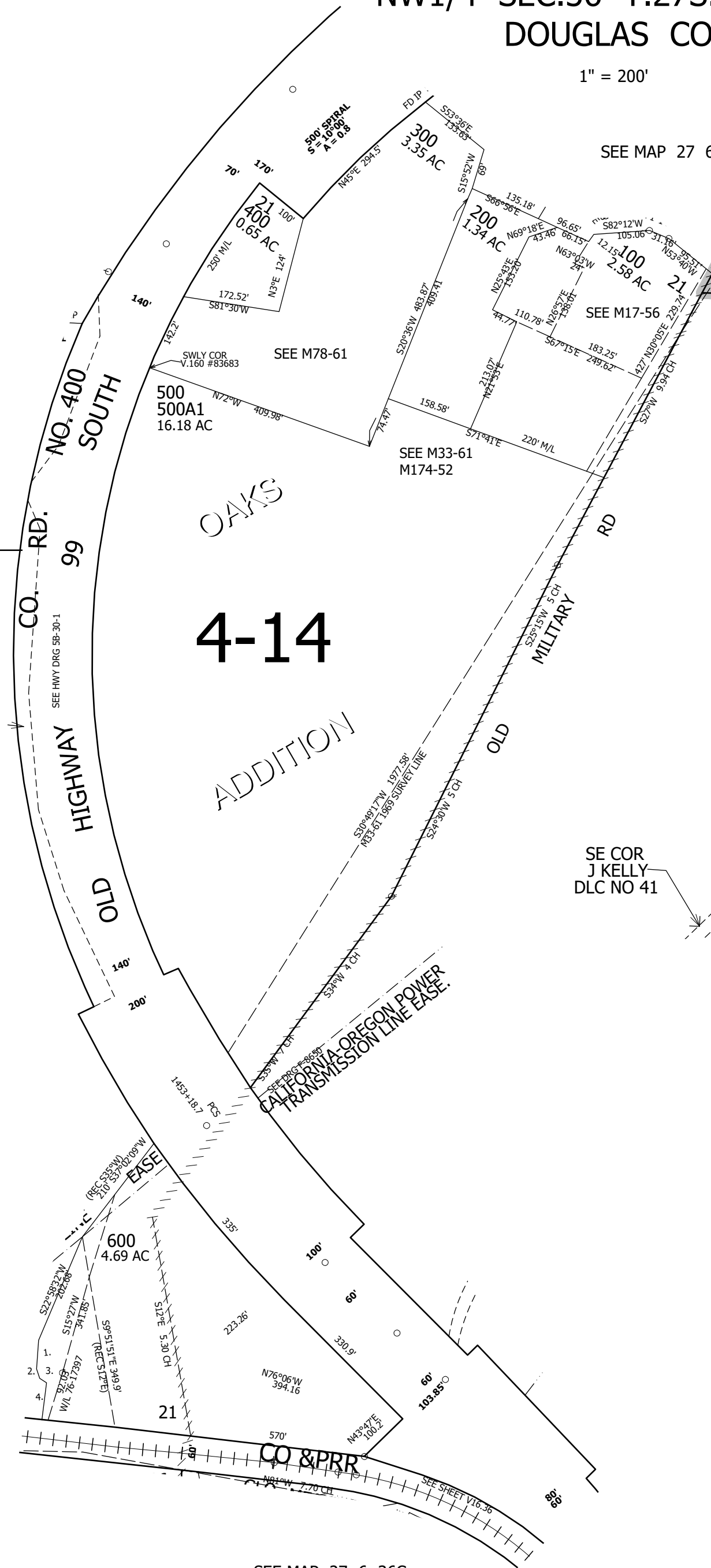
1/4
COR

CANCELLED NO'S

SEE MAP 27 6 35A

SEE MAP 27 6 36

- PARCEL 600
1. S4°05'36"W 51.66'
 2. S18°29'20"E 18'
 3. S57°33'16"E 14.79'
 4. S7°15'14"W 75.04'



SEE MAP 27 6 36C

1/4
COR

CEN
SEC

4,159,000

564,000

27 6 36B