

THIS MAP WAS PREPARED FOR ASSESSMENT PURPOSE ONLY.

SE1/4 SEC.34 T.27S. R.6W. W.M. DOUGLAS COUNTY

REVISED ON 2-2-22

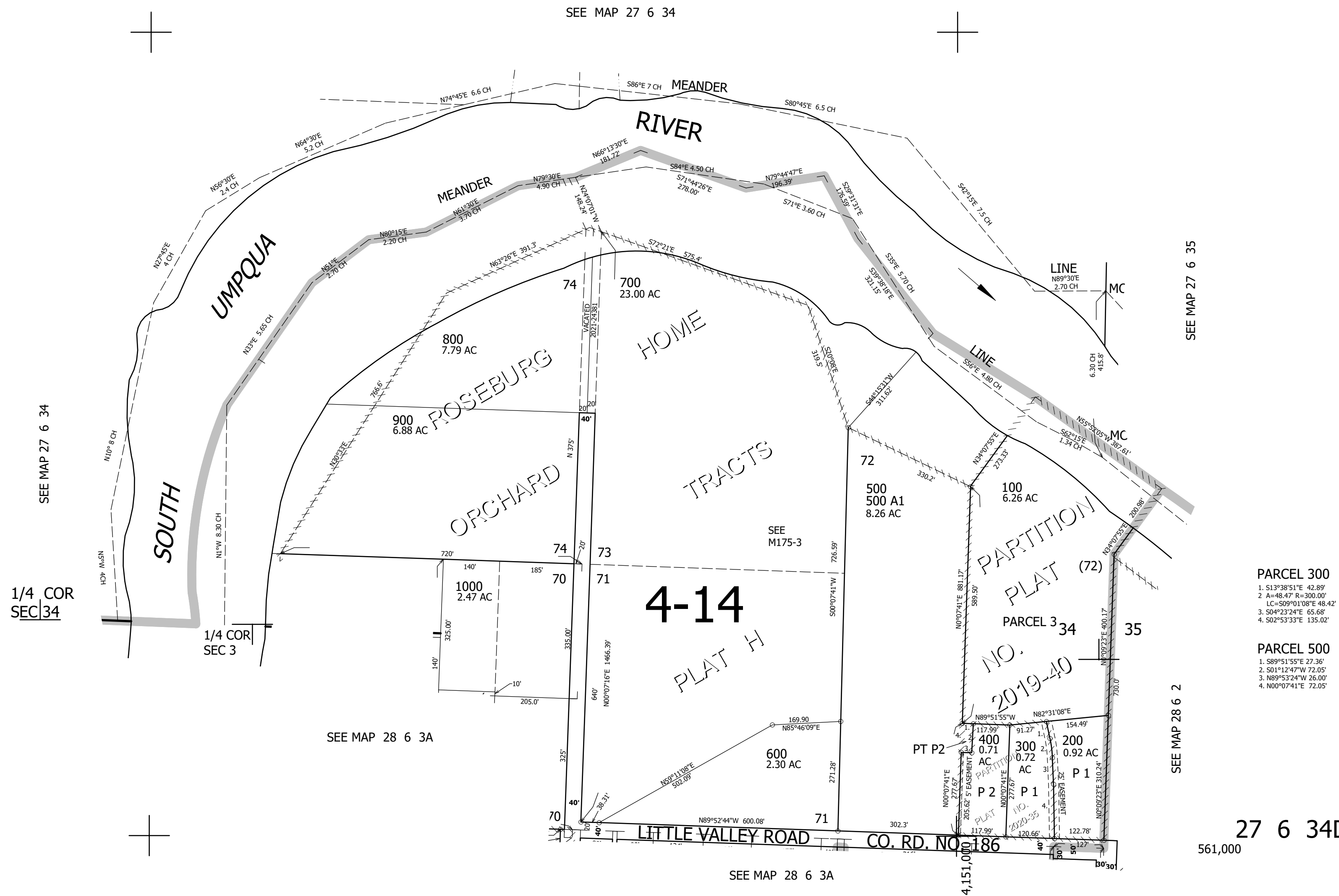
27 6 34D

1" = 200'

CEN  
SEC

1/4  
SEC

CANCELLED NO'S



1/4 COR  
SEC 34

1/4 COR  
SEC 3

PARCEL 300

- 1. S13°38'51"E 42.89'
- 2. A=48.47' R=300.00'
- LC=509°01'08"E 48.42'
- 3. S04°23'24"E 65.68'
- 4. S02°53'33"E 135.02'

PARCEL 500

- 1. S89°51'55"E 27.36'
- 2. S01°12'47"W 72.05'
- 3. N89°53'24"W 26.00'
- 4. N00°07'41"E 72.05'

27 6 34D

561,000

SEE MAP 27 6 34

SEE MAP 27 6 34

SEE MAP 27 6 35

SEE MAP 28 6 3A

SEE MAP 28 6 2

SEE MAP 28 6 3A