

THIS MAP WAS PREPARED FOR ASSESSMENT PURPOSE ONLY.

SW1/4 SEC.30 T.27S. R.6W. W.M. DOUGLAS COUNTY

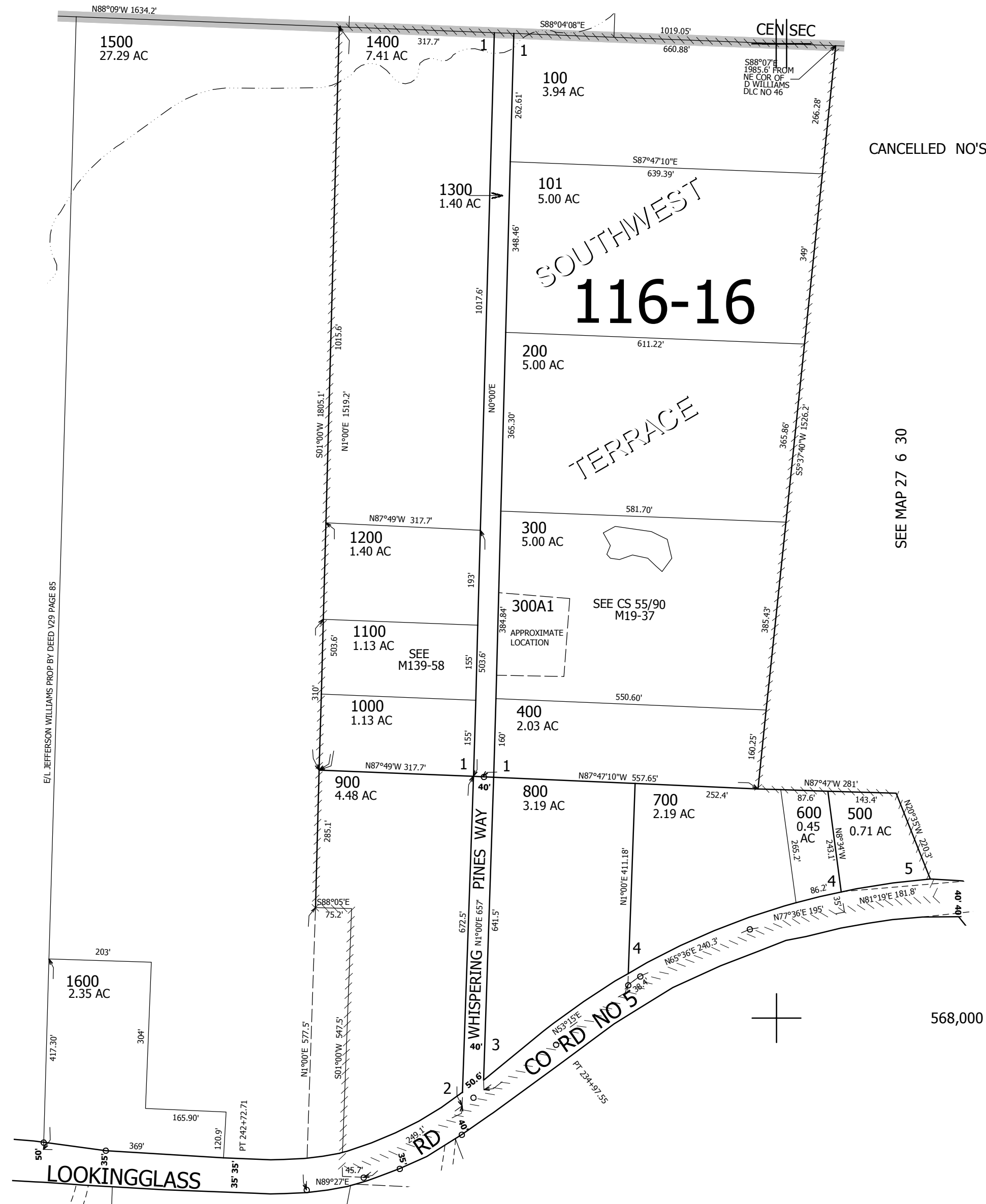
REVISED ON 3-22-21

27 6 30C

1" = 200'

NW COR DLC 46

SEE MAP 27 6 30



CANCELLED NO'S

SEE MAP 27 6 30

SEE MAP 27 6 30

568,000

SEE MAP 27 6 30

25	30
36	31

1/4 COR

4,133,000

27 6 30C