

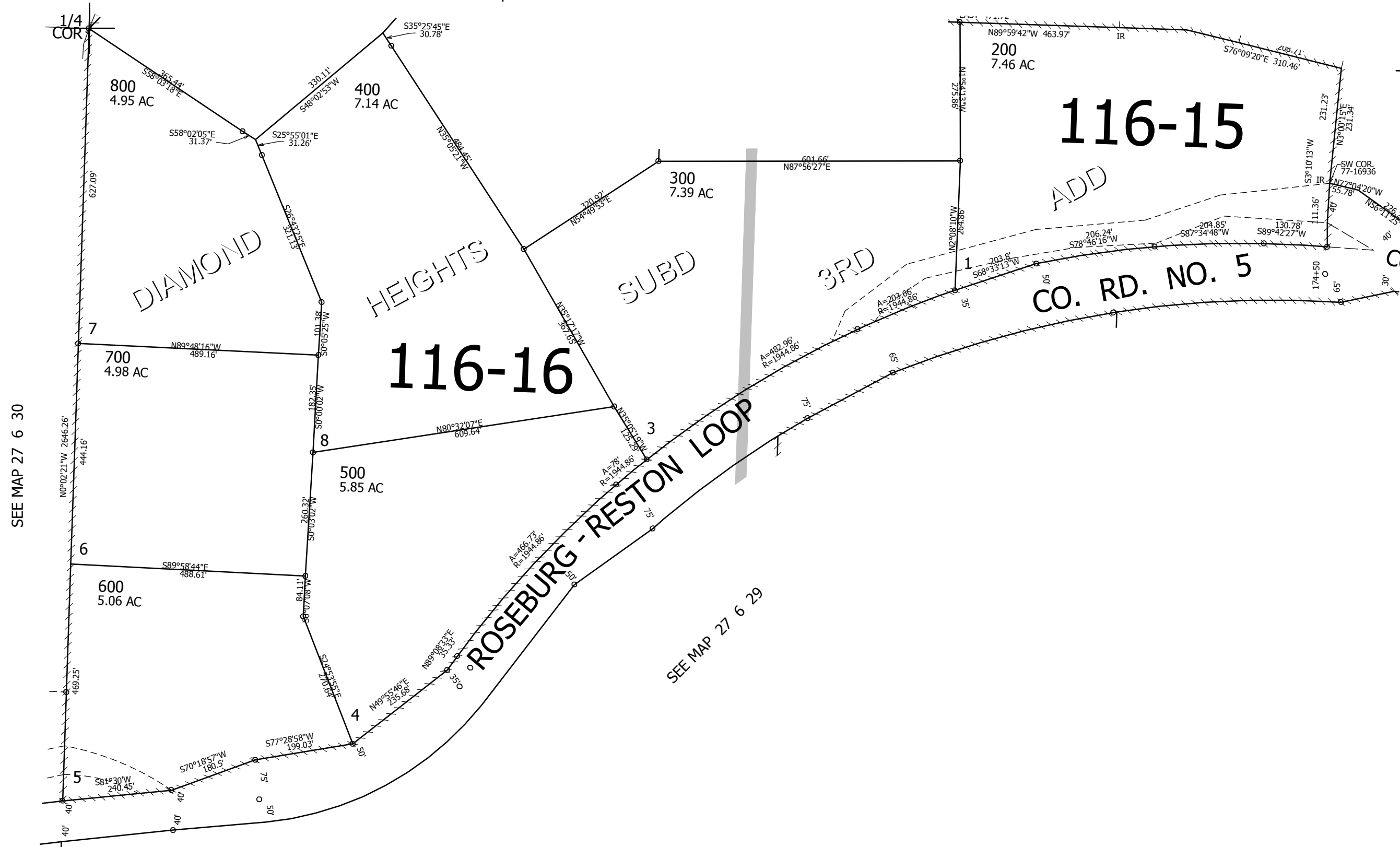
THIS MAP WAS PREPARED FOR ASSESSMENT PURPOSE ONLY.

SW1/4 SEC.29 T.27S. R.6W. W.M.
DOUGLAS COUNTY
1" = 200'

REVISED ON
12-17-12

27 6 29C

SEE MAP 27 6 29B



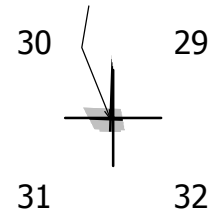
SEE MAP 27 6 30

SEE MAP 27 6 29

SEE MAP 27 6 29A

CANCELLED NO'S
100

568,000



1/4
COR

4,138,500

27 6 29C